

2025-2026

Legislative Platform

Our Community. Our Commitment.



TABLE OF CONTENTS

Board of Supervisors & District Map	2
Mission Statement	3
Legislative Advocacy Overview	4
Guiding Principles	5
County Budget Overview	6
Board Initiatives	10
• Homelessness	11
• Housing Assistance	12
• OC Builds	13
• OC Cares	14
• Orange County Veterans Cemetery	15
• Opioid Epidemic	16
• Sustainability & Resiliency	17
• Workforce Development	18
Legislative Platform Policy Statements	19
• Public Protection	20
• Community Services	23
• Infrastructure & Environmental Resources	29
• General Government Services	35
County Background	38
Civic Center Directory	39

Cover:



- 1 Wieder Regional Park - District 1
- 2 Old Orange County Courthouse - District 2
- 3 Red Rock Wilderness - District 3
- 4 Fishing Pier at Carbon Canyon Regional Park - District 4
- 5 Dana Point Harbor - District 5



BOARD OF SUPERVISORS & DISTRICT MAP



JANET NGUYEN
SUPERVISOR
1ST DISTRICT



VICENTE SARMIENTO
SUPERVISOR
2ND DISTRICT



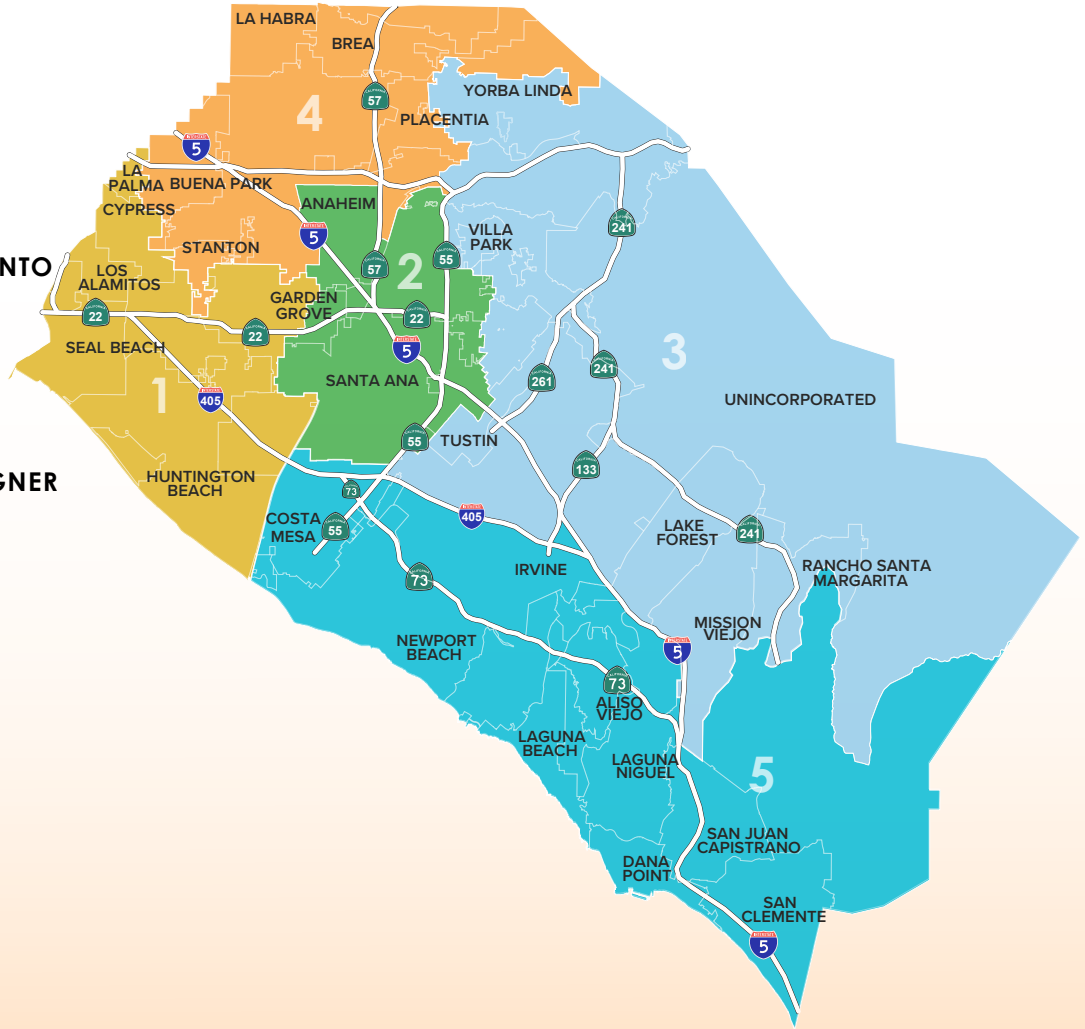
DONALD P. WAGNER
SUPERVISOR
3RD DISTRICT



DOUG CHAFFEE
SUPERVISOR
4TH DISTRICT



KATRINA FOLEY
SUPERVISOR
5TH DISTRICT



1ST DISTRICT

Cities:
Cypress,
Fountain Valley,
Garden Grove*,
Huntington Beach,
La Palma, Los Alamitos,
Seal Beach, Westminster

Unincorporated Areas:
Midway City, Rossmoor

2ND DISTRICT

Cities:
Anaheim*,
Garden Grove*, Orange*,
Santa Ana, Tustin*

Unincorporated Areas:
North Tustin*

3RD DISTRICT

Cities:
Anaheim*, Irvine*,
Lake Forest, Mission Viejo,
Orange*,
Rancho Santa Margarita,
Tustin*, Villa Park,
Yorba Linda

Unincorporated Areas:
Modjeska, North Tustin*,
Silverado,
Trabuco Canyon,
Williams Canyon

4TH DISTRICT

Cities:
Anaheim*, Brea,
Buena Park, Fullerton,
La Habra, Placentia,
Stanton

5TH DISTRICT

Cities:
Aliso Viejo, Costa Mesa,
Dana Point, Irvine*,
Laguna Beach,
Laguna Hills,
Laguna Niguel,
Laguna Woods,
Newport Beach,
San Clemente,
San Juan Capistrano

Unincorporated Areas:
Coto de Caza,
Ladera Ranch, Las Flores,
Rancho Mission Viejo

*City/CDP split by district.



MISSION STATEMENT



OUR MISSION

“Making Orange County a safe, healthy, and fulfilling place to live, work, and play, today and for generations to come, by providing outstanding, cost-effective regional public services.”

OUR VISION

For Business Values

We strive to be a high quality model governmental agency that delivers services to the community in ways that demonstrate:

- **Excellence**
Provide responsive and timely services
- **Leadership**
Leverage available resources as we partner with regional businesses and other governmental entities
- **Stewardship**
Seek cost-effective and efficient methods
- **Innovation**
Use leading-edge innovative technology

For Cultural Values

We commit to creating a positive, service-oriented culture which:

- Attracts and retains the best and the brightest
- Fosters a spirit of collaboration and partnership internally and externally
- Supports creativity, innovation, and responsiveness
- Demonstrates a “can-do” attitude in accomplishing timely results
- Creates a fun, fulfilling, and rewarding working environment
- Models the core values in everything we do

OUR VALUES

RESPECT • INTEGRITY • CARING • TRUST • EXCELLENCE



LEGISLATIVE ADVOCACY OVERVIEW

The Orange County Board of Supervisors is pleased to present its 2025-2026 Legislative Platform. It establishes the Board's initial legislative, regulatory, and budget funding priorities for the County's greatest needs, and creates the framework for its legislative advocacy program. The Board will review and may amend this document as necessary during the two-year legislative session.

The Legislative Platform provides general direction to the County Executive Office and County departments, legislative advocates, legislative delegation members, and the public on policy initiatives which impact the County's delivery of service.

The Legislative Platform has three sections:



County Budget Overview

High-level summary of the County's budget process, current fiscal conditions, projected revenues, and current or new unfunded mandate costs.



Board Initiatives

Issues and proposals which the Board has identified as an ongoing priority over the next two-year legislative session. The Board will review and may amend this list as necessary.



Legislative Platform Policy Statements

Aligned with the four County Budget Programs (Public Protection, Community Services, Infrastructure & Environmental Resources, General Government Services), legislative platform policy statements provide direction to the County Executive Office and the County's legislative advocates to engage on legislative proposals which may impact the County's mandated deliveries of service. A relevant platform policy statement is required for the Board of Supervisors to take an official County position on introduced or amended legislation.



GUIDING PRINCIPLES



Local Governance Authority

- The County supports legislation and budget actions that preserve its local discretionary control and flexibility over its governance issues, including land use authority and service delivery.



Efficient Service Delivery

- The County supports legislation and budget actions that encourage new technology and innovation to streamline the delivery of services.
- The County supports legislation and budget actions that reduce access barriers, increase efficiency, and expand equity of public programs.
- The County supports efforts to reduce maintenance of effort cost requirements, and reasonable administrative or regulatory oversight.



Fair Share Cost Recovery

- The County supports dependable, predictable, and equitable revenue streams and allocation methodologies which reflect County responsibilities, demographics, cost of living, and caseload growth.
- The County supports full reimbursement for all mandates and other responsibilities imposed by the federal and state governments.
- The County supports adjusting the State's outdated property tax allocation formula so that Orange County receives its fair share of property tax revenue.

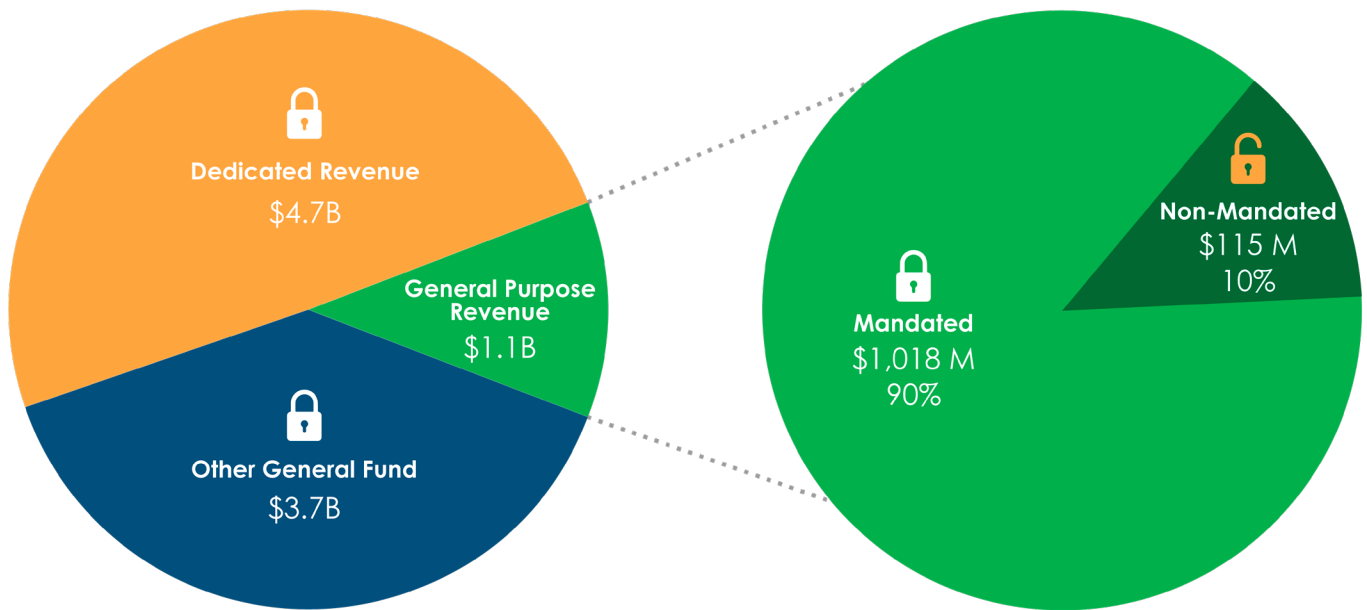


COUNTY BUDGET OVERVIEW

The Orange County Board of Supervisors approves an annual budget that provides the essential community, capital, and operational needs of the County while addressing new and ongoing challenges. As a political subdivision of California, budget allocations determined by the Legislature and the Governor for new or ongoing mandated programs will impact Orange County's annual budget and the health and welfare of our residents. New unfunded mandates will reduce available funds needed to service increasing caseloads.

The County's budget relies on three revenue sources: Dedicated Revenue, Other General Fund, and General Purpose Revenue

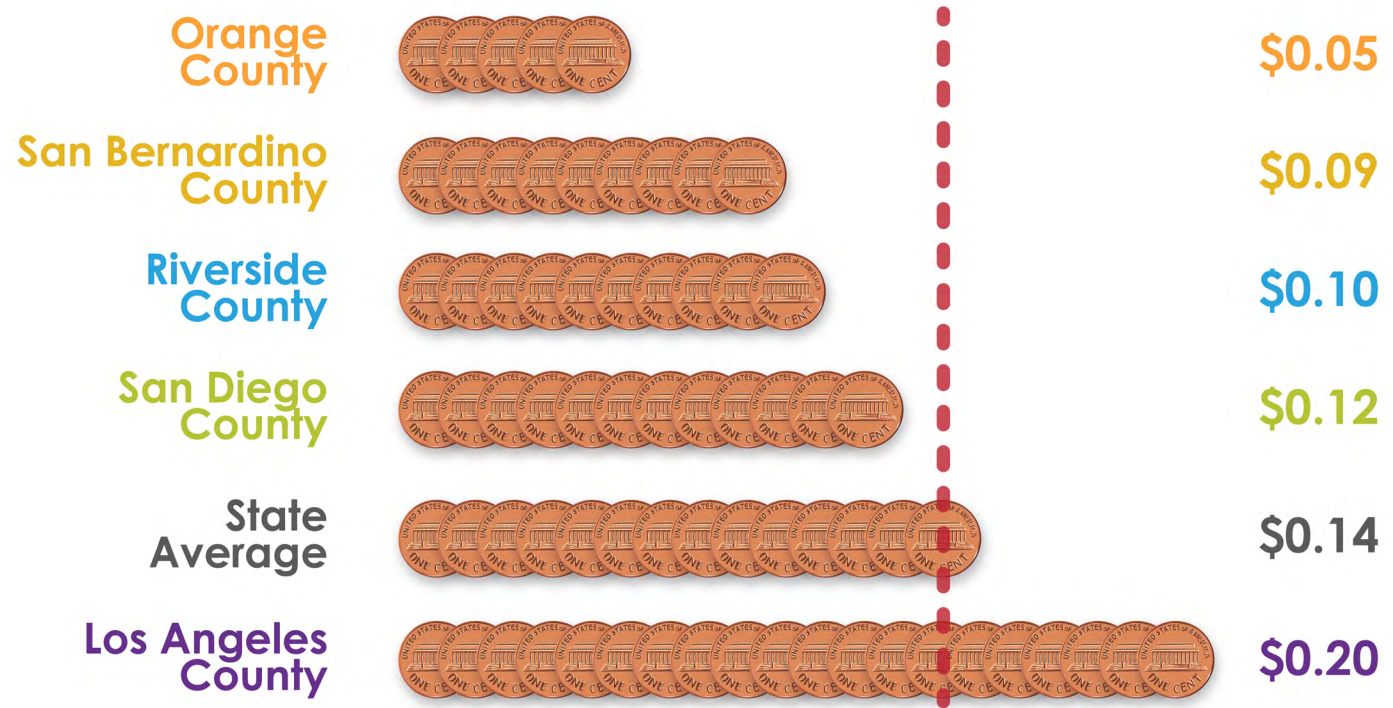
ORANGE COUNTY FY 2024-25 BUDGET \$9.5 BILLION



The County uses General Purpose Revenue to meet its unfunded mandated service requirements by the state and federal governments, such as match requirements for Community Services programs or Maintenance-of-Effort funding, as well as operational expenses for Public Protection and General Government Services departments.



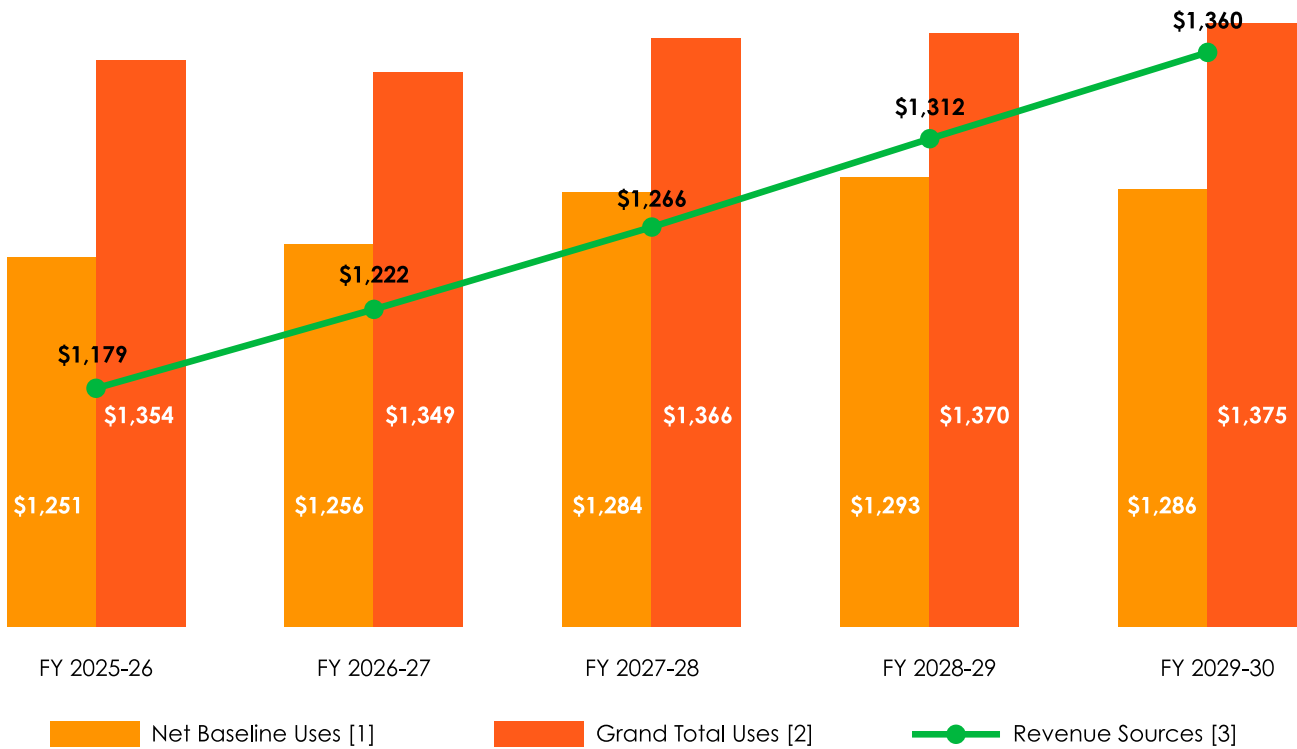
- 92% of the County's \$1.1 billion General Purpose Revenue comes from property taxes.
- Orange County receives the lowest property tax allocation of all 58 counties in the State at five cents for every dollar as shown below:



Neighboring counties with similar populations have more revenue to provide similar, required services. Orange County must meet its mandated responsibilities first, leaving less funding for non-mandated services and other County priorities.



2024 Strategic Financial Plan: General Fund Sources & Uses (in millions)



Notes:

- [1] Net Baseline Uses includes NCC limits, restore augmentations, and reserve increases, if applicable.
- [2] Grand Total Uses includes Net Baseline Uses, expand augmentations, Capital Improvement Plan, Information Technology Plan and strategic priority requests.
- [3] Sources include General Purpose Revenues and one-time revenue sources, if applicable.

UNFUNDED MANDATE PRESSURES FOR 2025

In recent years, legislative changes have shifted more responsibilities to the County without associated funding and restricted County discretion in service levels or implementation. Issues causing fiscal pressure for the County include:

In-Home Supportive Services (IHSS)

In 2017, the State abruptly ended the Coordinated Care Initiative, shifting \$600M from the State to all counties and a new Maintenance-of-Effort (MOE) that included an annual 5% to 7% inflation increase. The first-year County cost was \$45M and is projected to be \$80M in FY 2024-25 – a 78% increase over the last seven years. The County has shifted Realignment funding from Child and Welfare Services and diverted \$24M from General Purpose Revenue to fund the IHSS MOE, with a projected \$8M increase for FY 2025-26.



Behavioral Health Services Act Implementation (BHSA – Proposition 1)

Passed by the voters in March 2024, Proposition 1 modernizes the existing Mental Health Services Act (MHSA), revises the funding categories and limits, adds substance abuse disorders as an eligible service, and shifts funding away from counties to the State for many preventive services programs. When implementation begins in FY 2026-27, the County will lose \$340M in MHSA and receive \$174M under the new BHSA allocation – a nearly 50% cut. Unless other state funding is provided, the County must begin reducing or eliminating current preventive services programs.

Trial Court Security Realigned Funding

In 2011, the State realigned Trial Court security services to counties but provided an insufficient growth factor allocation for incurred county costs. Since then, the County has diverted approximately \$7M annually from General Purpose Revenue to provide mandated security services for the Courts.

Fixed MOE Payments and Excess Revenue MOE Payments to the State

Under AB 233 (Escutia, 1997), counties are required to share 50% of any excess revenue received from specific court fines, fees, and penalties with the State. Each county's excess base revenue amount was determined by a 1994-1995 MOE with the State, and Orange County's base revenue payment is approximately \$19M.

Legislative actions at the State level to decrease or eliminate specific court fines, fees and penalties have reduced the County's share of court revenues by 59%. Despite not receiving any excess revenue since 2013, the County must continue diverting approximately \$5M annually from General Fund Revenue to meet its unfunded mandate payment.



BOARD INITIATIVES

Although the cost of doing business continues to grow, the Board of Supervisors is committed to implementing key initiatives and moving toward a future that will enrich the lives of Orange County's residents. By aligning strategic priorities with emerging issues, Board Initiatives identify the most critical needs over the next two-year legislative session. The Board of Supervisors will review and may amend this list as necessary.

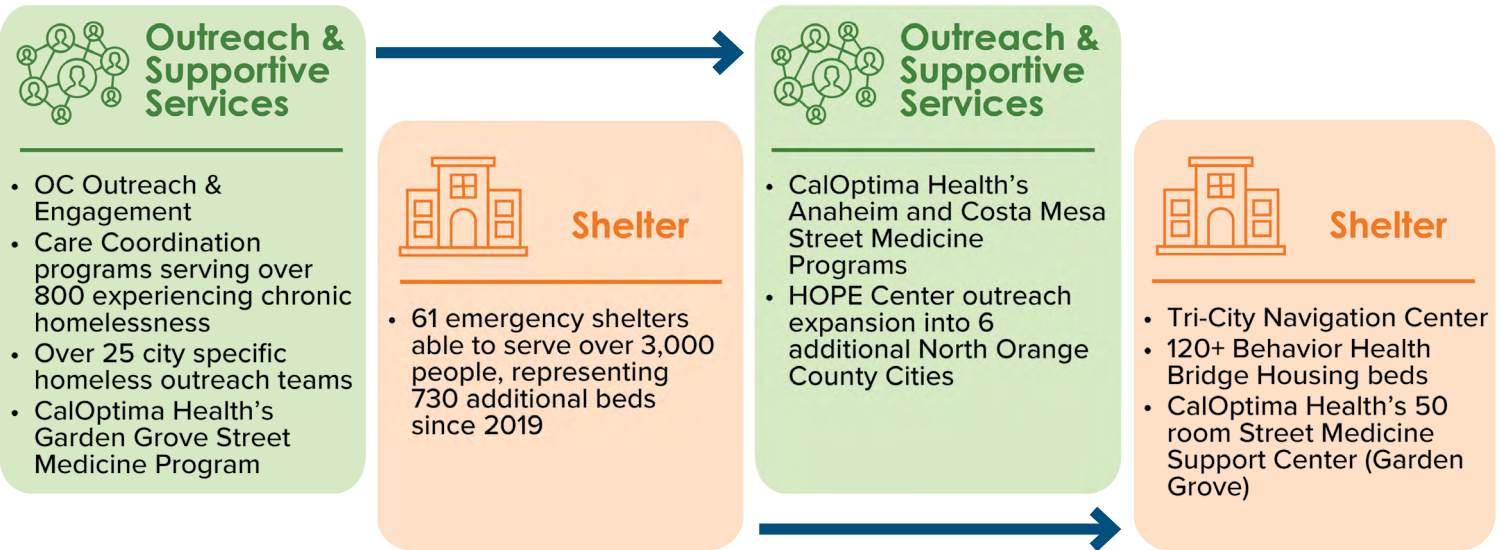
- **Homelessness**
- **Housing Assistance**
- **OC Builds**
- **OC CARES**
- **OC Veterans Cemetery**
- **Opioid Epidemic**
- **Sustainability & Resiliency**
- **Workforce Development**



HOMELESSNESS

ORANGE COUNTY'S HOMELESS SERVICE SYSTEM

WHAT IS COMING ONLINE...



BACKGROUND:

Homelessness statewide increased 20% over the last five years and rose 29% in neighboring Southern California counties. In the County of Orange, efforts to house and serve homeless individuals and prevent additional residents from becoming homeless have kept the growth rate to 7%, a quarter that of nearby counties. Ongoing efforts require consistent funding to counties to sustain and increase their success. High-acuity individuals require specialized placements and the plethora of new programs at the state level lack enabling regulations and have not translated into sufficient growth of these systems of care.

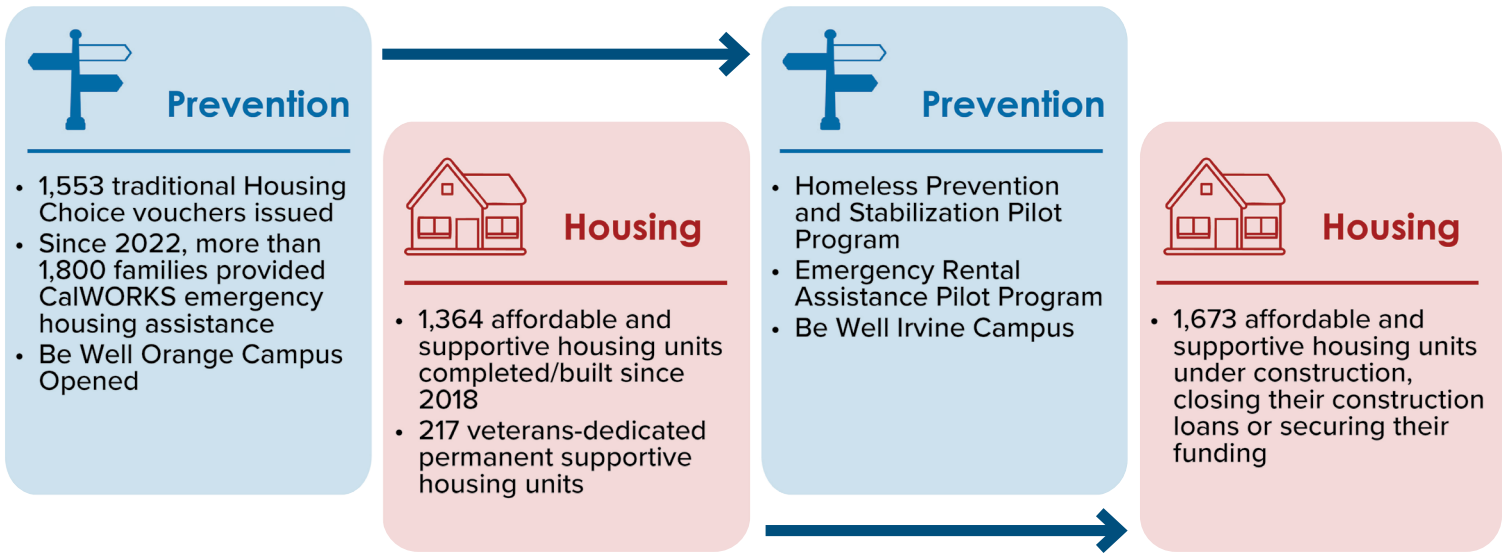
ASKS:

- Expand unconditional funding for County projects that demonstrate success in housing and services for the homeless through the budget process.
- Expand placement options for high-need individuals to include transitional rental assistance, and ease restrictions on additional housing build-out requirements.

HOUSING ASSISTANCE

ORANGE COUNTY'S HOMELESS SERVICE SYSTEM

WHAT IS COMING ONLINE...



BACKGROUND:

The County of Orange, along with partner cities, is leading the way in affordable housing production in our region aligned with the County's Housing Funding Strategy from 2022. Since 2018, the County has invested \$114 million in the construction of 24 developments, resulting in a total of 1,647 housing units. Despite this progress, costs per unit continue to increase, housing needs have grown, and existing funding is inadequate. The County has implemented creative partnerships to move projects forward and would benefit from more funding and flexibility for difficult-to-build projects.

ASKS:

- Provide state or federal funding for the Orange County Housing Finance Trust.
- Assist the County with obtaining the State Department of Housing and Community Development's (HCD) approval of Orange County's Housing Element.
- Provide full funding for federal housing vouchers to cover the cost of subsidized housing.
- Provide the County additional flexibilities for Regional Housing Needs Assessment (RHNA) housing requirements, reduce production costs for supportive and affordable housing options, and extend Project Homekey and Homeless Housing, Assistance and Prevention (HHAP) investments.

OC BUILDS



Santa Ana Gardens Flood Control Channel Bikeway



John Wayne Airport Capital Improvements

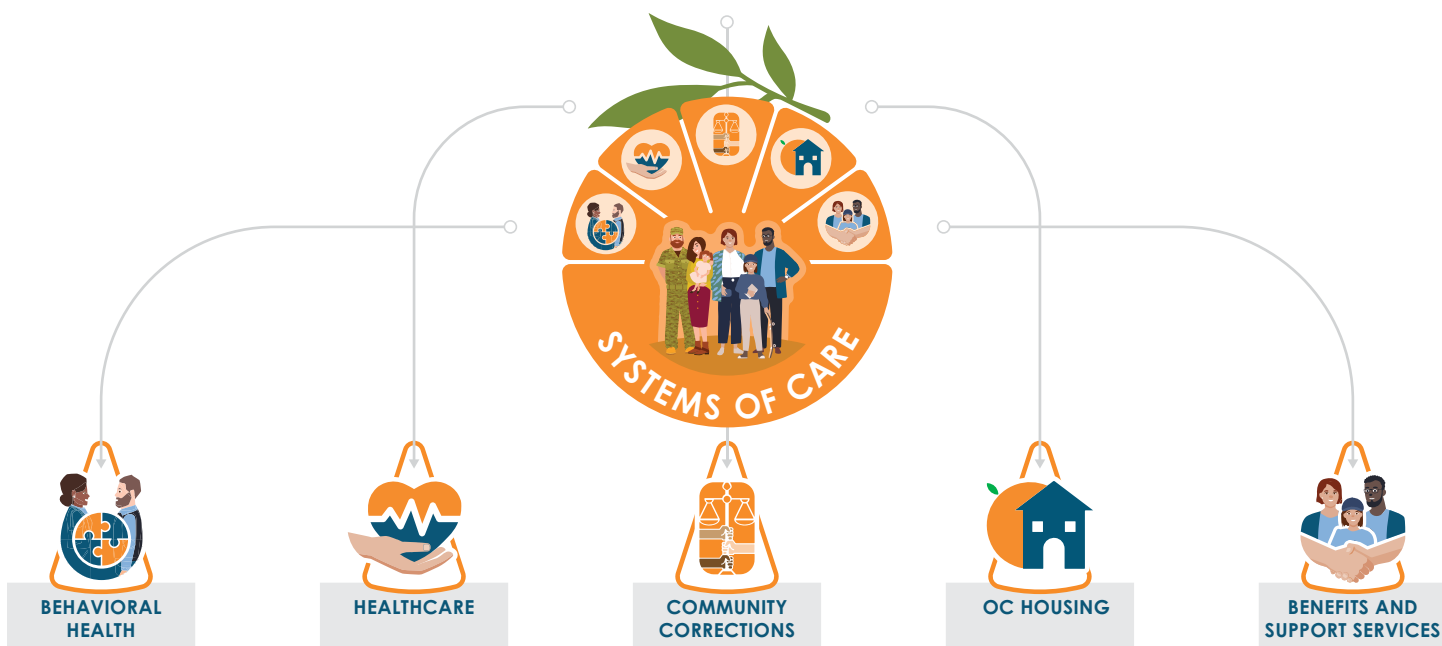
BACKGROUND:

OC Builds identifies the County's current and future transportation and technological infrastructure needs, such as bridges, roads, flood control channels, and cybersecurity that prioritize the safety of Orange County residents and facilitate transportation. The goal is to develop greener, more sustainable infrastructure that reduces greenhouse gas emissions, prioritizes the use of renewable energy, preserves natural landscapes and resources, and decreases food waste and consumer waste. In addition, the County continues to enhance its airport infrastructure to provide a world-class airport that is safe, facilitates efficient travel, and provides an enjoyable customer experience.

ASKS:

- As part of the budget process, maintain and expand both formula and discretionary grant programs to fund the completion of high-impact County infrastructure, guided by local input on County capital projects such as bridges, roads, and flood control channels, and prioritize necessary upgrades to enhance public access to County resources.
- Request funding to enhance John Wayne Airport's infrastructure, including significant investments in reconstructing taxiways and modernizing the passenger processing system to ensure a world-class airport experience that facilitates safe and efficient travel.
- Provide increased funding to invest in technological infrastructure to modernize cybersecurity systems with an emphasis on innovation, mobility and a focus on strengthening system and data security.

OC CARES



BACKGROUND:

The OC CARES system links the various systems of care in the County to provide full care coordination and services for justice-involved individuals to successfully reenter society and work towards self-sufficiency. These systems of care include behavioral health, healthcare, housing, benefits and support services, and community correction. The County began the initiative to address the current and possible underlying needs of justice-involved individuals involved in any of the County's systems of care and includes coordinated care management, linkages to programs and services, and assistance with job readiness and employment.

ASKS:

- Expand the ability to share information through changes in state laws or regulations to allow sharing among County agencies and local partners to serve the unique needs of high utilizers of the County's safety net system.
- Create and fund new licensing standards and placements through legislation and the budget to ensure a successful continuum of care.
- Fund and provide sufficient time to implement broad changes in the delivery of care, from behavioral health to correctional settings as part of the state budget.

ORANGE COUNTY VETERANS CEMETERY



BACKGROUND:

Home to former Army, Navy, and Marine bases and an estimated 105,000 veterans, Orange County is California's largest county without a veterans cemetery. After years of delay, the Orange County Board of Supervisors, all 34 cities, a bipartisan majority of the County's state and federal delegation, public safety and labor organizations, and more than 100 local, state and national veterans organizations are united in support of the Southern California Veterans Cemetery at Gypsum Canyon in Anaheim. The Board of Supervisors has deeded 200 acres of County-owned land at Gypsum Canyon to the Orange County Cemetery District (OCCD) for a public cemetery and a separate veterans cemetery, allocated \$20 million exclusively for the veterans cemetery, and sponsored AB 1595 (Quirk-Silva) which authorized \$25 million in previously secured state funding for Gypsum Canyon. Assemblywoman Sharon Quirk-Silva and State Senator Tom Umberg secured an additional \$5 million for the veterans cemetery in the 2024 State Budget Act,

and now \$50 million in county and state funding is now allocated to immediately begin construction. The Anaheim City Council unanimously approved OCCD's permitting application, allowing OCCD, the California Department of Veterans Affairs (CalVet) and the County to continue collaborating on land development for shared cost options, and to provide for shared infrastructure for both cemeteries.

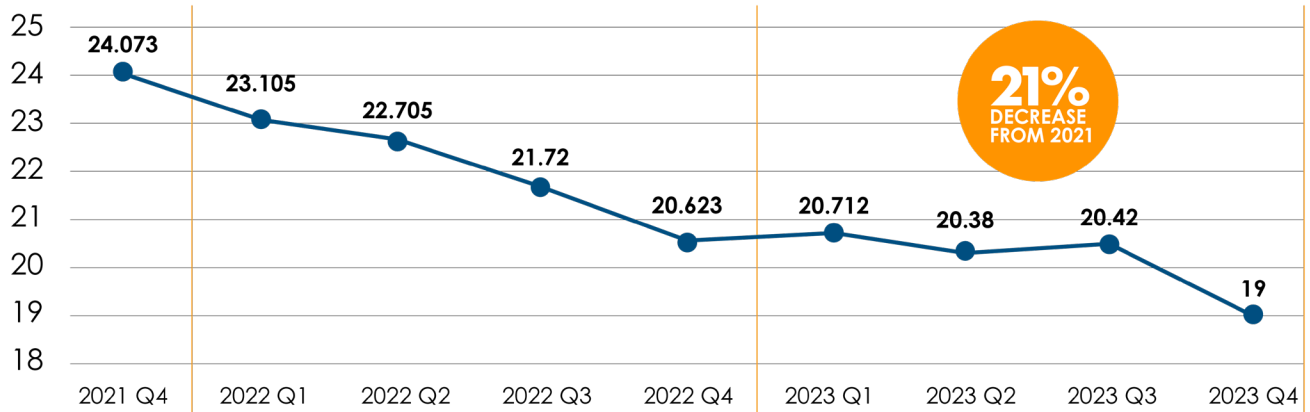
ASKS:

- Expedite CalVet's acquisition of land in Gypsum Canyon to start the design and construction of the Southern California Veterans Cemetery.
- Authorize transfer of \$50 million of state and local funds into the Southern California Veterans Cemetery Master Development Fund.
- Provide dedicated state and federal funding to the cemetery to meet its full funding needs through the state and federal budget process or member requests.

OPIOID EPIDEMIC

Orange County Deaths - Total Population

Any Opioid : Age-Adjusted Rate per 100k Residents



BACKGROUND:

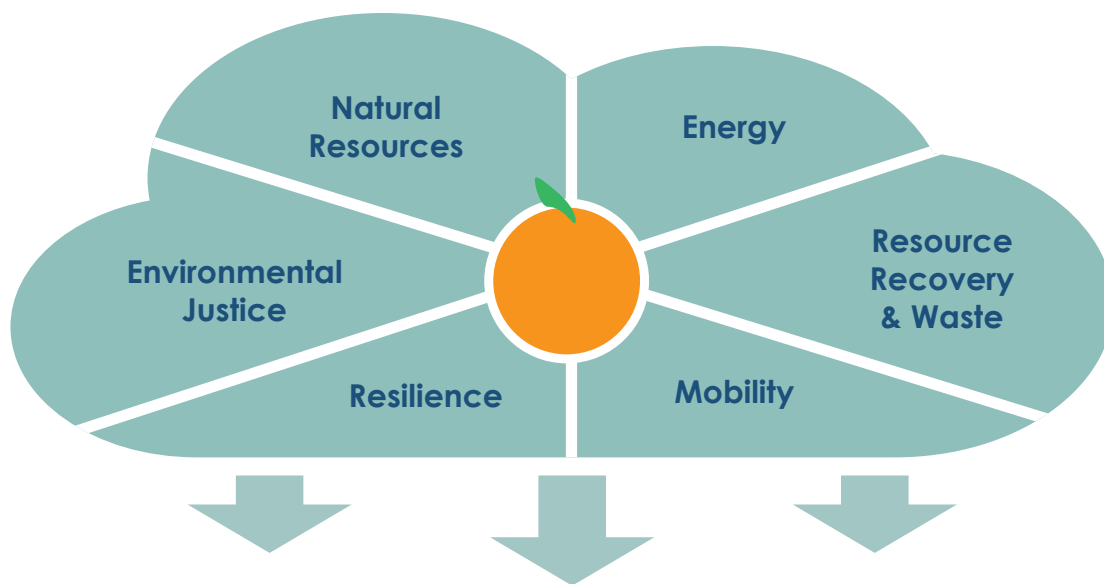
Orange County continues to be on the frontlines of the opioid crisis through efforts focused on preventing misuse of opioids, supporting treatment of Opioid Use Disorder (OUD), and providing outreach and educational opportunities to abate the opioid epidemic within the community. To promote prevention, the County hosts public awareness campaigns, targeted prescriber outreach and community education public forums to increase awareness of opioid misuse. In efforts to support treatment and recovery services, the County provides medication-assisted treatment and education on naloxone administration to individuals with OUD. The County also participates in regional coalitions and initiatives with community partners, advocates for legislative changes,

and issues numerous reports to the State on the opioid epidemic and its impacts on residents. Although preliminary counts of overdose deaths are decreasing due to these efforts, the County strives to combat the opioid crisis even further.

ASKS:

- Through the budget process, fully fund the County's increased treatment responsibilities mandated by the Legislature to ensure alternatives to incarceration are successful and recidivism is reduced.
- Streamline coordination among local law enforcement agencies to deter crime across jurisdictions, and increase penalties and accountability for those engaged in the narcotics trade.

SUSTAINABILITY & RESILIENCY



BACKGROUND:

The County has established an Office of Sustainability and produced its first-ever preliminary Climate Action Plan (CAP), a centralized effort to organize and set goals for the implementation of sustainable projects and infrastructure. The plan organizes six priority sectors: Energy, Mobility, Resource Recovery and Waste, Environmental Justice, Natural Resources, and Resilience. Waste Recovery activities account for 87% of emissions and the County has led the way on reductions through organics recycling and infrastructure enhancements.

ASKS:

- Provide additional flexibility, funding, and local authority through regulatory changes to assist the County in complying with state and federal climate mandates.
- Expedite or exempt permitting requirements for County infrastructure that provides essential public services and aligns with CEQA-certified CAP objectives.

WORKFORCE DEVELOPMENT



BACKGROUND:

Orange County seeks to attract, retain and develop a highly skilled and competent workforce so that public services can be effectively and efficiently provided to the community. Additionally, the County is committed to lowering unemployment, reducing poverty and promoting sustainable growth in our communities through strategic planning for economic development. Despite significant national and global headwinds, the County continues to see strong economic and employment activity, as several industries have more than fully recovered from pandemic-era job losses.

ASKS:

- Provide increased funding for County workforce training and development to ensure skilled and specialized positions can be filled, resulting in development and retention of a high-performing workforce.
- Fund programs to provide opportunities for high school graduates, work experience participants, and internships to receive on-the-job training to prepare for a future career path with the County.
- As part of the Master Plan for Career Education and California Jobs First Initiative, the State should sustain the central coordinating role of county workforce agencies and enhance access to high-value regional industries, especially for disinvested communities.



LEGISLATIVE PLATFORM POLICY STATEMENTS

Aligned with the four County Budget Programs (Public Protection, Community Services, Infrastructure & Environmental Resources, General Government Services), legislative platform policy statements provide direction to the County Executive Office and the County's legislative advocates to engage on proposals which may impact the County's mandated deliveries of service. A relevant platform policy statement is required for the Board of Supervisors to take an official County position on introduced or amended legislation.





PUBLIC PROTECTION

Statement Number	Issue	Summary/Action Item	Department	State/Federal
P-1	Aging Juvenile Facilities	Support efforts to improve existing juvenile facilities and provide resources for infrastructure changes required by legislative mandates.	<i>Probation</i>	State/ Federal
P-2	Appeals Process	Support reforms to streamline the appeals process in criminal cases, including those cases involving special circumstances.	<i>District Attorney</i>	State/ Federal
P-3	Court Appointed Dependency Counsel Funding	Support legislation or administrative action to fully fund optimal caseloads for dependency attorneys.	<i>Public Defender</i>	State
P-4	Court Maintenance-of-Effort	Modernize Maintenance-of-Effort statutes to reflect the State's responsibility for revenue decreases and alleviate County cost pressures.	<i>County Executive Office</i>	State
P-5	Court Security	Support funding for court security efforts.	<i>County Executive Office</i>	State/ Federal
P-6	Court-Ordered Services	Support measures that increase accessibility to court-ordered services for vulnerable adults and at-risk youth.	<i>Social Services Agency</i>	State/ Federal
P-7	Criminal Justice Sentencing	Support restoration of accountability to the criminal justice system by ensuring sentences are fully carried out and sufficiently address the significance of each crime.	<i>Sheriff's Department/ County Executive Office/District Attorney</i>	State/ Federal
P-8	Custody Operations	Support funding for construction, modernization, and staffing of adult criminal justice facilities that will meet needs created by realignment and address long-term sentences in County jails.	<i>Sheriff's Department</i>	State
P-9	Cyber-Crime	Support efforts to assist law enforcement in combatting cyber-crime and promote programs that increase cybersecurity awareness.	<i>Sheriff's Department</i>	State/ Federal
P-10	Disaster Preparedness & Response	Support measures that increase resources, timely reimbursement, and authority for disaster preparedness and response initiatives requiring County involvement, including for natural resources restoration and for rebuilding or repairing infrastructure and property in post-disaster or emergency recovery assistance.	<i>Health Care Agency/ Social Services Agency/ Sheriff's Department/ OC Community Resources</i>	State/ Federal
P-11	Driving Under the Influence	Support efforts to increase penalties and accountability for driving under the influence, as well as resources that promote efforts to prevent driving under the influence.	<i>County Executive Office/District Attorney</i>	State
P-12	Homeland Security/OCIAC	The County supports: <ul style="list-style-type: none"> Increased coordination on homeland security and emergency response efforts among federal, state and local governments with clearly defined roles and responsibilities for each. Increased federal and state funding for the Orange County Intelligence Assessment Center (OCIAC). 	<i>Sheriff's Department/ District Attorney</i>	State/ Federal



Statement Number	Issue	Summary/Action Item	Department	State/Federal
P-13	Human Trafficking	Support efforts to prevent sexual assault, human trafficking and related crimes.	County Executive Office/District Attorney/Sheriff's Department/Social Services Agency	State/Federal
P-14	Indigent Defense Services	Support ongoing, sustainable funding to deliver unfunded state-mandated legal services in post-conviction cases.	Public Defender	State
P-15	Juvenile Justice Interventions	Support proposals that increase funding, local discretion, and resources needed to effectively meet the treatment needs of youth and implement statewide juvenile justice reforms. Oppose measures that would impede the ability to effectively provide treatment services and supervision to youth at their first point of entry into the juvenile system.	Probation	State
P-16	Law Enforcement Collaboration	Support efforts to encourage collaboration between local law enforcement and state and federal agencies to address shared public safety and cyber security threats.	Sheriff's Department	State/Federal
P-17	Opioid & Narcotics Epidemic	Support efforts to address the illicit use of narcotics, including opioids, such as fentanyl, by holding drug traffickers accountable, stopping the flow of narcotics across the border and disrupting the use of social platforms to illegally sell and distribute, including supporting funding for naloxone distribution projects.	Sheriff's Department/District Attorney	State/Federal
P-18	Public Administrator	Support legislation or administrative action, which would reaffirm existing authority under Probate Code section 2900-2903, authorizing the Public Administrator to access vital information from financial institutions allowing deputies to properly administer their cases.	District Attorney	State
P-19	Public Administrator Judicial Responsibilities	Support legislation or administrative action which would emphasize the importance of the Public Administrator's judicial responsibilities under Probate Code section 7600-7604, authorizing deputies to perform duties to protect individuals and potential victims.	District Attorney	State
P-20	Public Safety	Support a public safety system that promotes local law enforcement services, crime prevention, prosecution of crime, confinement of high-risk adults, and evidence-based programs aimed at rehabilitation and lowering the recidivism rate.	County Executive Office/Sheriff's Department/District Attorney/Health Care Agency	State/Federal
P-21	Public Safety Realignment	Protect existing funding and support for AB 109 public safety realignment and Proposition 172.	County Executive Office/Sheriff's Department/District Attorney	State



PUBLIC PROTECTION

Statement Number	Issue	Summary/Action Item	Department	State/Federal
P-22	Recidivism	Support funding for recidivism reduction efforts in adult and juvenile offenders, further enhancing the County's ability to collaborate with and expand funding for partnerships with non-governmental/community-based organizations.	County Executive Office/Sheriff's Department/ Probation/District Attorney	State/ Federal
P-23	Reduce Harm Caused by Gun Violence	Support efforts to reduce harm caused by gun violence, including educational and awareness campaigns, the enforcement of existing gun control regulations, eliminating County liability for the provision of gun safety devices, and gun buyback events.	County Executive Office/Health Care Agency/ Sheriff's Department	State/ Federal
P-24	Reentry	Support funding for reentry programs that support housing services, employment services, and other supportive services for individuals reentering the community.	County Executive Office/OC Community Resources/OC Public Works/ Social Services Agency/ Probation	State/ Federal
P-25	Treatment Capacity	Support funding for both in-custody and out-of-custody programming and facilities in order to enhance the County's rehabilitation and treatment programs for inmates and out-of-custody defendants. Protect existing sources of revenue that fund critical inmate programs including mental health and collaborative courts.	County Executive Office/District Attorney/ Health Care Agency/ Sheriff's Department/ Probation	State/ Federal
P-26	Unsanctioned Substance Use	Monitor state and federal efforts to report and restrict the misuse of substances, including but not limited to nitrous oxide, ketamine, and esketamine, and support efforts to prevent their misuse.	County Executive Office	State/ Federal
P-27	Victims' Rights	Support victims' rights programs and services for victims of crimes.	County Executive Office/District Attorney	State



COMMUNITY SERVICES

Statement Number	Issue	Summary/Action Item	Department	State/Federal
CS-1	Adult Services	Increase resources and services such as day care and transportation for adults who are unable to live independently or are at risk of abuse and neglect, as well as the individuals who provide them with care.	<i>Social Services Agency</i>	State/ Federal
CS-2	Adult Services Evaluations	Support efforts to remove obstacles to the efficient and thorough assessment of allegations of abuse and neglect of adults who are unable to live independently or are at-risk of abuse/neglect.	<i>Social Services Agency</i>	State/ Federal
CS-3	Animal Care Shelter	Support funding for regional animal shelter facility maintenance and programs, and support feral cat trap, neuter, and release authority.	<i>OC Community Resources</i>	State
CS-4	Animal Cruelty	Support stronger penalties for those convicted of animal abuse.	<i>OC Community Resources</i>	State
CS-5	Arts	Support efforts to promote local art initiatives, including arts therapy, art programming, cultural and visual performing arts, theater arts, and museums.	<i>County Executive Office</i>	State/ Federal
CS-6	Behavioral Health Funding	Oppose reductions in funding for behavioral health services and efforts to redirect funding to other programs and services that may shift costs to counties and reduce funding flexibilities.	<i>Health Care Agency/OC Community Resources</i>	State/ Federal
CS-7	Behavioral Health Services	Support proposals to increase accessibility and funding for quality substance use and/or mental health services for children and adults, including prevention and harm reduction, community outreach and education, and treatment and recovery services provided in the most appropriate setting.	<i>Health Care Agency/Social Services Agency</i>	State/ Federal
CS-8	CARE Act Implementation	As a Cohort One County, support legislation addressing the timelines for outreach and engagement of respondents, and ensuring the Public Defender receives regular, predictable funding to perform required activities. Ensure sufficient resources and flexibility to serve the gravely disabled population.	<i>Health Care Agency/Public Defender</i>	State
CS-9	Caseload Growth & Funding for Services	Secure equitable and consistent funding to sufficiently support caseload growth, regulatory changes, and other related administrative costs.	<i>Social Services Agency</i>	State/ Federal
CS-10	Child Care	Support measures that enhance the overall quality, affordability, capacity, accessibility, and safety of childcare and development programs.	<i>Social Services Agency</i>	State/ Federal
CS-11	Child Support: Funding	Support proposals to fully fund County child support collection program costs; increase funding for local child support service programming including the costs of administering mandated child support, paternity, and medical needs services; and ensure the equitable allocation of funding to Local Child Support Agencies and protect local control.	<i>Child Support Services</i>	State



COMMUNITY SERVICES

Statement Number	Issue	Summary/Action Item	Department	State/Federal
CS-12	Child Support: Debt/Arrearages	Support legislation that ameliorates the impact to low-income parents through efforts that include the reduction or elimination of child support debt to make child support arrearages more manageable and ease implementation of mandatory statewide child support guidelines.	<i>Child Support Services</i>	State
CS-13	Child Support: Hold Harmless	Support proposals that would hold counties harmless for any error or omission on the part of the State, including failure to meet collection standards.	<i>Child Support Services</i>	State
CS-14	Child Support: Collections	Support proposals that seek to enable local child support agencies to collect child support from non-traditional sources of income paid to parents who owe past-due child support.	<i>Child Support Services</i>	State
CS-15	Child Welfare: Caregiver Resources & Services	Support legislation that increases services and resources for caregivers of children and former foster youth who are victims of, or at risk of abuse, neglect, or exploitation.	<i>Social Services Agency/ Probation</i>	State/ Federal
CS-16	Child Welfare: Funding	Support child welfare funding reform efforts that increase eligibility for federal and state funds under programs that include, but are not limited to Title IV-E.	<i>Social Services Agency</i>	State/ Federal
CS-17	Child Welfare: Resources, Services & Placements	Support legislation that increases and supports appropriate short and long-term placements, services, and resource options for children and former foster youth who are victims of, or at risk of abuse, neglect, or exploitation.	<i>Social Services Agency/ Probation</i>	State/ Federal
CS-18	Early Childhood Development	Support efforts to secure funding for early childhood development, especially educational and awareness campaigns.	<i>OC Community Resources</i>	State/ Federal
CS-19	Educational & Interpretive Programming	Support funding for the development and implementation of educational and interpretive programming on natural, cultural, and historical resources. Support funding to assist local school and youth organizations, including underserved populations, to participate in these and other supportive programs.	<i>OC Community Resources</i>	State/ Federal
CS-20	Emergency Medical Services	Support legislation that strengthens local emergency medical services to improve system integration and oppose efforts that would enable system fragmentation or undermine public safety and the authority of local medical services agencies.	<i>Health Care Agency</i>	State/ Federal
CS-21	Environmental & Public Health	Support measures that increase funding, resources, and authority to promote and maintain environmental and public health efforts across the County that include regulatory compliance, enforcement, and response, to meet the needs of vulnerable populations.	<i>Health Care Agency</i>	State/ Federal



Statement Number	Issue	Summary/Action Item	Department	State/Federal
CS-22	Expanded Subsidized Employment	Improve local control and efficacy by allowing counties flexibility to utilize funds for expanded subsidized employment.	Social Services Agency	State
CS-23	General Assistance Funding	Support ongoing state funding for general assistance programs.	Social Services Agency	State
CS-24	Health Care Policy	Support health care policy implementation and modernization efforts that do not have an adverse financial impact on the County.	All	State/Federal
CS-25	Health Equity & Population Health	Support proposals that improve health equity and data sharing as appropriate, in collaboration with community partners, to ensure all population groups in the County have access to resources that promote and protect health, including LGBTQ+, reentry, individuals experiencing homelessness, and veterans among others.	Health Care Agency	State/Federal
CS-26	Homelessness Prevention	Support efforts to prevent homelessness, including funding for rental assistance to prevent loss of tenancy, programs that address the diverse root causes of homelessness, and expanding the coordination of services and supports for families experiencing, or at risk of experiencing, homelessness.	County Executive Office	State/Federal
CS-27	Hospitalization Rates	Support legislation that would cap hospitalization rates for County inmates at the federal government standard (Medicare and/or Medi-Cal rates).	Health Care Agency	State
CS-28	Housing	Support efforts to increase the availability of housing options including small-scale homes, permanent supportive housing and affordable housing. Promote the flexible use of funding and financing mechanisms to meet the needs of individuals and families, including additional funding for the Local Housing Trust Fund Program and expanded definitions of homelessness. Support additional options for the procurement of materials for affordable housing.	County Executive Office/Health Care Agency/OC Community Resources	State/Federal
CS-29	Immigration Reform	Monitor state and federal efforts to reform the immigration system, and support expedited review of pending immigration cases.	County Executive Office	State/Federal
CS-30	In-Home Supportive Services (IHSS)	Support legislation that promotes the financial sustainability of the IHSS Program and its providers through programmatic changes and appropriate cost sharing mechanisms between the State and counties. Support flexibilities for IHSS Advisory Committees to improve community participation and increase the number of individuals eligible to serve.	Social Services Agency	State



COMMUNITY SERVICES

Statement Number	Issue	Summary/Action Item	Department	State/Federal
CS-31	Independent Living	Support measures that enable seniors and the adult disabled population to obtain affordable housing, including funding and approval of senior housing projects, and continue to maintain seniors as a priority group in the housing voucher program.	OC Community Resources	State/Federal
CS-32	Inmate Medical/Mental Health Care	Support proposals, such as repealing the Medicaid Inmate Exclusion Policy among others, to maximize reimbursement of health care for criminal justice involved individuals while in-custody and in the community.	Health Care Agency	State/Federal
CS-33	Lanterman-Petris-Short (LPS) Act	Support reform of the LPS Act and related laws in a manner that would provide services and whole person care, protect patients' rights, promote patient engagement in their behavioral health treatment, and provide sufficient and ongoing funding for mandated services including additional resources for public guardians and conservators to manage and treat gravely disabled conservatees.	Health Care Agency	State
CS-34	Library Access, Literacy & Expansion Funding	Support proposals to increase public library access including: <ul style="list-style-type: none"> • Discounts for eligible public libraries on internet access and equipment. • Increased funding for capital improvement projects, including electric vehicle charging and solar panels, as well as maintenance, expansion, and new services development. • Training and resources to help provide literacy programs and services including education and social services. • Increased access to digital content for all Californians through expanded public library consortiums and networks. 	OC Community Resources	State/Federal
CS-35	Low & Moderate-Income Housing	Support efforts to streamline funding, construction processes, and land use regulations, which expedite the development of low- and moderate-income housing units and allow local governments to adequately plan to meet the housing needs of all economic segments of the community.	OC Community Resources/OC Public Works	State/Federal
CS-36	Master Plan for Aging	Support efforts to increase funding for the Older Californians Act and other programs included in the California and County Master Plan for Aging. Promote flexible laws and regulations to facilitate the creation, improvement, and maintenance of infrastructure and services for residents as they age.	All	State/Federal



Statement Number	Issue	Summary/Action Item	Department	State/Federal
CS-37	Medi-Cal 1915(b) & 1115 Waivers (CalAIM)	Support efforts to enhance the Medi-Cal program and support services, while maximizing local flexibility and available funding. Prioritize regulatory guidance that clarifies County and Medi-Cal managed care plan responsibilities to deliver equitable, enhanced health care management that reduces health disparities.	<i>Social Services Agency/Health Care Agency</i>	State/Federal
CS-38	OC Cares	Support legislation and funding that advances the OC Cares initiative to effectively link systems of care across the County, provide full care coordination, and improve service delivery across the criminal justice system and health and social service agencies, among others.	<i>All</i>	State/Federal
CS-39	Public Health & Wellness	Support measures that protect the public against disease and disability and promote health.	<i>Health Care Agency</i>	State/Federal
CS-40	Public Health Infrastructure & Emergency Response	Support legislative and budgetary proposals to sustain and strengthen infrastructure and efforts to respond to, and recover from, public health emergencies and resulting economic impacts both during the emergency and long-term recovery period.	<i>All</i>	State/Federal
CS-41	Refugee Services & Supports	Support proposals to increase services and resources for refugees and asylees that include employment services, health assessments, and referrals to health and mental health services; and ensure the ability of local governments to recover costs. Support efforts to secure funding for the Office of Immigrant and Refugee Affairs (OIRA).	<i>Health Care Agency/Social Services Agency</i>	State/Federal
CS-42	Self-Sufficiency	Provide equitable and sufficient funding, services, and resources to help individuals and families achieve self-sufficiency.	<i>Social Services Agency</i>	State/Federal
CS-43	Sober Living Homes	Support measures that bring more accountability to sober living homes in order to balance the need of those who seek recovery with the residents of the communities where these facilities are or may be located.	<i>County Executive Office/District Attorney/Health Care Agency/OC Public Works/ Sheriff's Department</i>	State/Federal
CS-44	Spay/Neuter	Support funding for spay/neuter and microchipping education, vouchers, and clinics. Support feral cat trap, neuter, and release authority.	<i>OC Community Resources</i>	State
CS-45	Stabilize Foster Care Insurance	Support efforts to stabilize the insurance market for organizations assisting placements of children in the foster care system.	<i>Social Services Agency</i>	State
CS-46	STI/HIV Management Services	Support legislation and efforts to broaden STI/HIV management programs to include recommended vaccines for LGBTQ+, persons living with HIV, and at-risk individuals.	<i>Health Care Agency</i>	State/Federal



COMMUNITY SERVICES

Statement Number	Issue	Summary/Action Item	Department	State/Federal
CS-47	System of Care Data Sharing Integration	Support efforts that improve or expand data sharing among County agencies and partners to enhance care coordination and cross-sector collaboration, increase outreach to expand/expedite access to services and benefits offered by public agencies, and facilitate more efficient and effective service delivery while ensuring client privacy and confidentiality.	All	State/Federal
CS-48	Transitional Aged Youth Housing	Support funding and approval of transitional aged youth housing projects, especially for those transitioning out of the foster care system and/or experiencing homelessness.	County Executive Office/OC Community Resources/Social Services Agency	State/Federal
CS-49	Veterans Services, Programs & Housing	Support programs, services, and funding for our veterans, including: <ul style="list-style-type: none"> • Funding for the County veterans service offices (VSOs). • Funding and approval of veteran housing projects. • Maintaining veterans as a priority group in the housing voucher program. • Expedited training and certification for VSO claims officers, and increased access to the veterans' affairs database. 	OC Community Resources	State/Federal
CS-50	Veterans Cemetery	Support efforts to fund and expedite development of the Southern California Veterans Cemetery at Gypsum Canyon in Anaheim Hills.	County Executive Office/OC Public Works	State/Federal
CS-51	Work Participation Credit	Support efforts to provide states and localities administering the California Work Opportunity & Responsibility to Kids program partial work participation credit for participants.	Social Services Agency/OC Community Resources	State/Federal
CS-52	Work Participation Requirements	Support efforts to protect the County from fiscal sanctions for non-compliance stemming from the discrepancies between federal Temporary Assistance for Needy Families (TANF) and state California Work Opportunity & Responsibility to Kids (CalWORKs) requirements.	Social Services Agency	State/Federal



INFRASTRUCTURE & ENVIRONMENTAL RESOURCES

Statement Number	Issue	Summary/Action Item	Department	State/Federal
IN-1	Airport Ground Transportation	Support ground transportation-related measures that ensure passenger safety, protect the County's resources and property, and treat all ground transportation providers serving John Wayne Airport fairly and equitably.	John Wayne Airport	State
IN-2	Alternative Project Delivery	Support legislation that gives local governments and agencies greater flexibility to use alternative project delivery methods.	OC Public Works	State
IN-3	Banning Specified Waste	Support efforts to ban hazardous materials from landfill disposal, transformation/conversion technology, and organics/recycling facilities.	OC Waste and Recycling	State
IN-4	Beach Preservation & Coastal Funding	The County supports: <ul style="list-style-type: none"> • Funding and efforts for coastal resiliency research, planning, jurisdictional coordination, engineering, design, streamlined permitting, and implementation, beach and sand nourishment, coastal erosion control, and shoreline and beach preservation. • Dedicated and predictable funding for coastal flood risk and storm damage reduction projects. • Sharing of federal outer continental shelf revenues with coastal states to support conservation, coastal infrastructure resiliency and wildlife protection programs. 	OC Public Works/ OC Community Resources	State/ Federal
IN-5	Beverage Container Recycling	Support programs and funding to increase the availability of beverage container recycling (CRV) facilities.	OC Waste and Recycling	State
IN-6	Broadband Affordable Connectivity Program (ACP)	Support ACP reauthorization and other efforts to provide and restore greater broadband access to underserved communities, veterans, and the elderly population.	County Executive Office	State/ Federal
IN-7	California Public Utilities Commission (CPUC) Tariffs	Support efforts to ensure that CPUC tariffs and their interpretation do not shift utility costs from utility owners to counties.	OC Public Works	State
IN-8	California Environmental Quality Act (CEQA)	Promote revisions to modernize, simplify, and streamline CEQA requirements, including environmental clearance reciprocity and abuse of the review process.	OC Public Works	State
IN-9	Capital Improvement & Infrastructure Funding	Support legislation that provides increased and sustainable funding for capital improvements and infrastructure projects to address safety, security, accessibility, critical maintenance needs, and other important upgrades at County-owned facilities.	All	State/ Federal



INFRASTRUCTURE & ENVIRONMENTAL RESOURCES

Statement Number	Issue	Summary/Action Item	Department	State/Federal
IN-10	Clean Energy Infrastructure	The County supports: <ul style="list-style-type: none"> • Programs and funding/loans for clean energy infrastructure, adoption of electric vehicle fleets, and technologies that meaningfully reduce air pollutants and Greenhouse Gas emissions. • Programs that bring resilient energy supply to County agencies to meet the growing demand for electric vehicle charging. • Responsibly zoned clean energy storage that does not place potential wildfire or residential areas at risk. 	OC Waste and Recycling/John Wayne Airport/OC Public Works/OC Community Resources	State/Federal
IN-11	Clean Water Act Rulemaking	Support clarification and application of federal final rulemaking for Waters of the United States, to expressly exclude stormwater conveyance and collection infrastructure.	OC Public Works	Federal
IN-12	Climate Goal Mandates & Initiatives	Support proposals that assist the County with state and federal climate mandates, and the County's climate goal initiatives. Support environmental justice-related efforts to remediate hazardous materials.	OC Waste & Recycling/OC Community Resources/OC Public Works/John Wayne Airport	State/Federal
IN-13	Coastal Rail Mobility & Resiliency	Support emergency actions and necessary repairs including prioritizing sand placement, to protect the Los Angeles-San Luis Obispo-San Diego rail corridor and preserve impacted beaches from coastal erosion and storm-related damage. Support regional coordination between state and local governments, transit and planning agencies, and freight and railroad operators to implement long term actions that protect the rail line and preserve the impacted beaches.	County Executive Office	State/Federal
IN-14	Cogeneration & Central Utility Plant Facilities	Maximize the capacity and efficiency of all County cogeneration and central utility plant facilities by providing its excess thermal and electric loads to County and other governmental agencies within the County's geographical boundaries.	OC Public Works	State
IN-15	Compliance Fines/Penalties	Oppose efforts that would establish or increase fines and penalties to the County related to organics, recycling, and procurement targets.	OC Waste and Recycling	State
IN-16	County Parks & Trails	Support state and federal funding for recreation amenities and improvements in county parks, facilities, lands, and trails.	OC Community Resources	State/Federal
IN-17	Dana Point Harbor	Support efforts that encourage development at Dana Point Harbor to enhance public access opportunities, deliver quality recreational opportunities, update visitor serving commercial opportunities, provide water quality improvements, and promote coastal resource preservation.	County Executive Office	State/Federal



Statement Number	Issue	Summary/Action Item	Department	State/Federal
IN-18	Diversion Credits	Support incentives that allow 100% diversion credits for conversion technologies and for beneficial reuse of materials at landfills.	OC Waste and Recycling	State
IN-19	Encroachment	Protect John Wayne Airport and County landfills from liabilities associated with new and encroaching development and other non-compatible land uses.	OC Waste and Recycling/John Wayne Airport	State
IN-20	Energy & Green Technology Incentives	Support incentives for residents, builders, local governments, and businesses of Orange County regarding the adoption, use, and economic benefits of green technology, recycled products, and eco-friendly products where economically feasible.	All	State/Federal
IN-21	Extended Producer Responsibility	Support extended producer responsibility, take-back, and recycling programs that place the financial responsibility on the producer of hazardous waste, pharmaceuticals, and explosive, flammable and non-biodegradable products.	OC Waste and Recycling	State/Federal
IN-22	Federal Aviation Administration (FAA)	Support efforts that increase transparency, local control, community engagement, and related funding in the FAA decision-making process when proposing changes to the National Airspace System affecting Orange County.	John Wayne Airport	Federal
IN-23	Fire Protection	Support enhanced funding for fire prevention and hazardous fuel removal projects in state responsibility area lands and ensure local agencies/landowners have access to these funds. Support funding for local agencies to better prepare park lands, and facilities for wildfire prevention, mitigation, and extinguishment and to assist local agencies in repairing and restoring fire-damaged property and recreational amenities.	OC Community Resources	State
IN-24	Flood Control	Support legislation that would provide clarity for local agencies in the reimbursement process with the State related to financial assistance received under the Department of Water Resources subvention program. Support expanded eligibility and additional funding for activities such as channel cleanups, enclosures of side channels, and other improvements to reduce litter entering the flood control system.	County Executive Office	State
IN-25	Flood Control Maintenance	Support measures that provide statutory exemptions on water use regulations to include critical flood control, water resource management and maintenance projects.	OC Public Works	State/Federal



INFRASTRUCTURE & ENVIRONMENTAL RESOURCES

Statement Number	Issue	Summary/Action Item	Department	State/Federal
IN-26	Forever Chemicals	Support measures that provide funding for the management, disposal, and cleanup of forever chemicals, including per- and polyfluoroalkyl substances (PFAS), and provide guidance and flexibility to comply with related requirements. Oppose measures that create liability for the federally mandated use of forever chemicals.	<i>John Wayne Airport/OC Public Works/OC Waste & Recycling</i>	State/ Federal
IN-27	Greenhouse Gas (GHG) Targets	Support efforts to allow municipal counties to reach GHG targets on a municipal countywide basis across their overall GHG inventory rather than sector specific.	<i>OC Waste & Recycling</i>	State
IN-28	Habitat Mitigation	Support legislation or administrative action which allows flexibility for County agencies to comply with long-term financial assurance requirements for habitat mitigation, standardization of land management requirements across regulatory agencies and County engagement and input in final mitigation requirements.	<i>OC Waste & Recycling/OC Community Resources</i>	State/ Federal
IN-29	Habitat Restoration	Support state and federal funding for watershed and habitat restoration efforts.	<i>OC Community Resources/OC Public Works</i>	State/ Federal
IN-30	Highway Users Tax Account	Protect the Highway Users Tax Account from being diverted for purposes other than County transportation.	<i>OC Public Works</i>	State
IN-31	Infrastructure	Support efforts to obtain fair compensation for long-term use, cost of review, and preservation of the intended usage of vital County and Orange County Flood Control District infrastructure and property.	<i>County Executive Office/OC Public Works</i>	State/ Federal
IN-32	Invasive Species	Support efforts that will provide funding to limit the continued spread of or reduce, control, and/or eradicate invasive species.	<i>OC Community Resources/OC Public Works</i>	State/ Federal
IN-33	Landfill Gas-to-Energy	Support efforts that facilitate the viable generation of electricity and natural gas for beneficial uses through landfill gas-to-energy and conversion technology facilities utilizing public utility transmission and distribution grids/line and lowering the cost to connect to distribution grids/lines.	<i>OC Waste & Recycling</i>	State/ Federal
IN-34	National Environmental Policy Act (NEPA)	Promote revisions that modernize, simplify and streamline NEPA, including environmental reciprocity clearance.	<i>OC Public Works</i>	Federal
IN-35	OC Fair & Event Center	Support efforts that promote greater access for the public to fulfill their recreational, cultural and educational needs at state-managed facilities, specifically the OC Fair & Event Center.	<i>County Executive Office</i>	State
IN-36	Organics Recycling	Support funding/loan programs for infrastructure, education, and outreach for organics recycling and energy/gas products from the conversion of municipal solid waste.	<i>OC Waste & Recycling</i>	State/ Federal



Statement Number	Issue	Summary/Action Item	Department	State/Federal
IN-37	Port of Entry	Support efforts to secure a Port of Entry designation from U.S. Customs and Border Protection at John Wayne Airport.	<i>John Wayne Airport</i>	Federal
IN-38	Recreation, Preservation & Historic Collections	Support funding to promote access to recreational opportunities, historic collections, and open space which include: the development, and/or improvement of recreation infrastructure, parkland, historic sites and landmarks, wilderness trails; maintenance of historical artifacts, park facilities, and habitat and wilderness areas; and restoration of encampment areas.	<i>OC Community Resources</i>	State/Federal
IN-39	Regional Housing Needs Assessment (RHNA)	Support legislation that provides clarity, addresses inconsistencies, or provides flexibility in the RHNA process for a successful completion of the County's Housing Element.	<i>OC Public Works</i>	State
IN-40	Regional Planning	Protect local decision-making authority and encourage regional planning that ensures economic competitiveness, and balances quality of life, environment, and health in the development of the Regional Air Quality Master Plan and the Regional Transportation Plan-Sustainable Communities Strategy.	<i>John Wayne Airport</i>	State/Federal
IN-41	Spent Nuclear Fuel	Support efforts to fully decommission the San Onofre site, and the timely removal and responsible management of spent nuclear fuel storage.	<i>County Executive Office/Sheriff's Department</i>	State/Federal
IN-42	Short-Lived Climate Pollutants	Monitor regulations being promulgated by the California Air Resources Board to address short-lived climate pollutants, including proposed reductions in the statewide disposal of organic waste from the 2014 level by 2020, and a 75% reduction by 2025.	<i>OC Waste & Recycling</i>	State
IN-43	State Flood Control Subvention Program	Support additional funding for the program to assist with the completion of federally authorized flood protection infrastructure projects.	<i>OC Public Works</i>	State
IN-44	Surplus Land Act	Support efforts that facilitate modification to the Surplus Land Act that allow development of County property for County uses, including open space, parks and other agency uses.	<i>County Executive Office/OC Public Works</i>	State
IN-45	Technology for Landfill Management & Compliance	Support efforts that expand the use of new or existing technology advancements for landfill management and regulatory compliance.	<i>OC Waste & Recycling</i>	State/Federal
IN-46	Trails & Bikeways Systems	Support state and federal funding for alternative transportation programs to expand and improve the County's regional trails and bikeways system.	<i>OC Community Resources/OC Public Works</i>	State/Federal



INFRASTRUCTURE & ENVIRONMENTAL RESOURCES

Statement Number	Issue	Summary/Action Item	Department	State/Federal
IN-47	Transportation Funding	Support provisions of the Surface Transportation Reauthorization Act, or other efforts, that maintain or provide increased funding for bridges, roads, and other infrastructure. Support efforts that direct state departments of transportation to consider the condition and effectiveness of local evacuation routes in high-risk areas when setting priorities for disbursement of highway funding.	OC Public Works	State/Federal
IN-48	Utility Lines/Wildfires	Support efforts that seek to improve utility fire mitigation standards in at-risk communities, including the use of underground utility-related infrastructure. Oppose efforts to reduce accountability for wildfire liability.	County Executive Office	State
IN-49	Waste Disposal Surcharge Fees	Oppose state fee surcharges unless they are based on reasonable and related costs and do not promote illegal dumping or cause undue financial burden to local governments.	OC Waste & Recycling	State
IN-50	Waste Management Operations	Support proposals that streamline regulations and permitting, and provide funding for solid waste, organics recycling, and hazardous waste disposal. Support efforts to secure additional funding streams for smart landfill systems.	OC Waste & Recycling	State/Federal
IN-51	Water Quality	Ensure that the implementation of the Clean Water Act, Water Resources Development Act, and the Porter-Cologne Act benefits County projects and programs.	OC Public Works/ John Wayne Airport	State/Federal
IN-52	Water Resources Infrastructure	Support funding and completion of vital flood and water infrastructure projects, including local stormwater capture and use projects that can provide drought resiliency and other related environmental benefits.	OC Public Works	State/Federal
IN-53	Water Use Efficiency	Support cost-effective water conservation programs and/or incentives that preserve water resources and the beneficial reuses of storm water. Support funding for conversion of existing or installation of new water delivery infrastructure for parks and facilities to upgraded and/or more efficient smart watering systems.	OC Community Resources/ John Wayne Airport/ OC Public Works	State/Federal
IN-54	Zoological Operations & Care	Support funding of the Orange County Zoo. Oppose efforts that would impose undue or cost prohibitive regulations or legislation on zoological operations and care.	OC Community Resources	State/Federal



GENERAL GOVERNMENT SERVICES

Statement Number	Issue	Summary/Action Item	Department	State/Federal
GS-1	2028 Olympics	Ensure full funding for all County efforts in support of the 2028 Summer Olympics, and support access to and siting of events in the County.	All	State/Federal
GS-2	Access & Equity	Support efforts to increase and sustain funding to improve disability and language access, deliver age-friendly services, and provide equitable resources to all County residents.	All	State/Federal
GS-3	Artificial Intelligence (AI)	Monitor ongoing state and federal efforts to develop a framework for the use and administration of AI to improve program efficiency and service delivery and collaborate where appropriate, including on efforts to educate the community and local partners.	County Executive Office	State/Federal
GS-4	Bonds & Funding Measures	Support equitable disbursements of state and federal funding, such as population-based formula funding, in all bond and funding measures affecting the County.	All	State/Federal
GS-5	Brown Act Modernization	Increase public participation, reduce travel barriers, and promote equity and inclusion by allowing continued access to remote meeting options. Ensure open access and robust public participation by allowing local agencies to constructively accomplish the people's business, maintain decorum and manage disruptive behavior during public meetings.	All	State
GS-6	Burdensome Regulatory Requirements	Support proposals that minimize burdensome requirements and legal obstacles, facilitate streamlined and efficient regulatory review and permitting for public agency/government projects, eliminate duplicative or contradictory regulations, and mitigate redundancy in reporting requirements.	All	State/Federal
GS-7	County Revenue	Support efforts to increase, protect and sustain local autonomy over local revenues, and ensure the County receives its fair share through the adoption of equitable funding mechanisms, such as population-based funding formulas.	All	State/Federal
GS-8	Cybersecurity	Support efforts to develop and implement state/federal governance and planning frameworks that will assess local government information systems and capabilities for cybersecurity risks and vulnerabilities. Support measures that provide funding to address cybersecurity risks and maintain cyber hygiene.	County Executive Office	State/Federal
GS-9	Economic Growth & Development	Support efforts to promote job growth and economic development, including workforce development needs.	All	State/Federal
GS-10	Employee/Labor	Support full cost recovery for salary, benefits, and administration for all employee relationships, and protect or enhance flexibility and local control over employee and labor relations issues.	County Executive Office	State



GENERAL GOVERNMENT SERVICES

Statement Number	Issue	Summary/Action Item	Department	State/Federal
GS-11	Funding Flexibility	Support proposals to enhance funding flexibility and oppose efforts to eliminate or redirect local government revenues.	All	State/Federal
GS-12	Gas Tax	Oppose hidden gas taxes and other similar regulatory efforts.	County Executive Office	State
GS-13	Grant Funding Restrictions	Support efforts to ensure local governments are not restricted from applying for or receiving grant funding.	All	State/Federal
GS-14	Local Governance Authority	The County supports legislation and budget actions that preserve its local discretionary control and flexibility over its governance issues, including land use authority and service delivery.	All	State/Federal
GS-15	Privacy/Security	Support legislation and efforts to increase protections for personal identifiable information collected electronically by the County in compliance with state and federal laws.	Treasurer Tax Collector/ Assessor/Clerk-Recorder	State/Federal
GS-16	Program Efficiency	Support efforts that promote the full funding and efficient administration of program services and benefits, and increase access and improve customer service. Identify opportunities to leverage AI to streamline government processes and the delivery of government services.	All	State/Federal
GS-17	Property Tax Revenue & Funding Equity	Protect local property tax revenues and rights afforded to the County. Support dependable, predictable, and equitable revenue streams, and adjust the State's outdated property tax allocation formula so that the County receives its fair share of property tax revenue.	County Executive Office	State
GS-18	Public Pensions	Support policy allowing local officials to manage pension systems that meet the needs of their workforce and demonstrate sound fiduciary management.	County Executive Office	State
GS-19	Public Pension Waiver	Seek waiver on IRS Rev. Rul. 2006-43 to allow County employees to elect alternative pension plans.	County Executive Office	Federal
GS-20	Public-Private Partnership	Support efforts to provide additional revenue generation opportunities on existing public property, such as public-private partnerships, to support and implement public programs or defer costs of new public buildings or infrastructure.	County Executive Office	State
GS-21	Regulatory Review Processes	Support efforts, including streamlining and simplification, that facilitate timely and efficient regulatory review and permitting for public agency/government projects, and increased coordination among federal and state agencies, while upholding environmental, health and safety, public protection and other important standards.	All	State/Federal
GS-22	Prop 13 Protections	Oppose efforts to harm Proposition 13.	County Executive Office	State



Statement Number	Issue	Summary/Action Item	Department	State/Federal
GS-23	State & Federal Mandates	Support full funding for state and federal mandates on the County, and pursue revisions to streamline the process for local government.	All	State/Federal
GS-24	State/Federal Realignment & Cost-Shifts	Oppose proposals to restructure, realign, or otherwise shift administrative, financial, or operational responsibility for programs to local government without commensurate compensation, including efforts to shift tax revenues and tax increment from the County to the State, other local entities, or special districts.	All	State/Federal
GS-25	Technology	Support funding, use of technology, technological integration, and technological advances to increase efficiency and expand/expedite access to services and benefits offered by County agencies and its agents; including monitoring developments and progress regarding AI.	All	State/Federal
GS-26	Tustin/El Toro Military Bases	Support expedited resolution of remaining issues at the closed Tustin and El Toro military bases to facilitate conveyance of the land to the County, per the requirements of the Base Realignment and Closure Act.	County Executive Office	Federal
GS-27	Unfunded Actuarial Accrued Liability	Support legislation that requires full payment of unfunded actuarial accrued liability for active and retired employees enrolled in the Orange County Employees Retirement System if a public agency withdraws from Orange County Fire Authority.	County Executive Office	State
GS-28	Voter Threshold	Oppose efforts to reduce the voter threshold necessary to increase taxes or fees.	County Executive Office	State
GS-29	Voting Systems & Access	Support legislation that promotes and increases voter registration and access for as many eligible voters as possible, establishes consistent funding for the maintenance and replacement of voting systems equipment, and provides adequate funding for the administration of election services.	Registrar of Voters	State/Federal



COUNTY BACKGROUND

Incorporated in 1889, the County of Orange spans nearly 800 square miles and includes 42 miles of coastline. There are 34 cities in the County and several unincorporated areas. Of the 58 counties in California, Orange County ranks third in population with more than 3 million people. It is also the fifth-most populous county in the United States.

A five-member Board of Supervisors, each elected to four-year terms in district nonpartisan elections, serves as the legislative body of the County, which functions under a Charter adopted in 2002. The Board governs the following:

All Assessment Districts, All Community Facilities Districts, All Reassessment Districts, Housing and Community Development Commission, Housing Successor Agency to the Orange County Development Agency, In-Home Supportive Services Public Authority, Industrial Development Authority For Orange County, Local Redevelopment Authority, Former Marine Corp Air Station (MCAS) El Toro, Orange County Financing Authority, Orange County Flood Control District, Orange County Housing Authority, Orange County Housing Authority Acting As the Housing Successor Agency, Orange County Public Financing Authority, Orange County Special Financing Authority, South Orange County Public Financing Authority, and the Successor Agency to the Orange County Development Agency.

The County is a regional service provider committed to maximizing resources and improving the quality of life for its residents. The County's primary goal is the effective and efficient delivery of services of its core business areas: Aviation, Environmental Protection, Public Assistance, Public Health, Public Safety, Regional Planning and Social Services. There are 23 agencies and departments including:

Assessor*, Auditor-Controller*, Board of Supervisors*, Child Support Services, Clerk of the Board, Clerk-Recorder*, County Counsel, County Executive Office, Ethics Commission, District Attorney – Public Administrator*, Health Care Agency – Public Guardian, Office of Independent Review, Internal Audit, John Wayne Airport, OC Community Resources, OC Public Works, OC Waste & Recycling, Probation, Public Defender, Registrar of Voters, Sheriff-Coroner*, Social Services Agency and Treasurer-Tax Collector*. (* indicates elected official departments)

The County Executive Officer is appointed by the Board and directs the County's day-to-day government operations. The Chief Financial Officer is responsible for presenting the Board with a Recommended Budget for consideration of adoption as the Final (Adopted) Budget, which serves as the foundation of the County's financial planning and control. The County employs approximately 18,500 permanent full-time employees and the Total Budget for FY 2024-25 is \$9.5 Billion.



CIVIC CENTER DIRECTORY

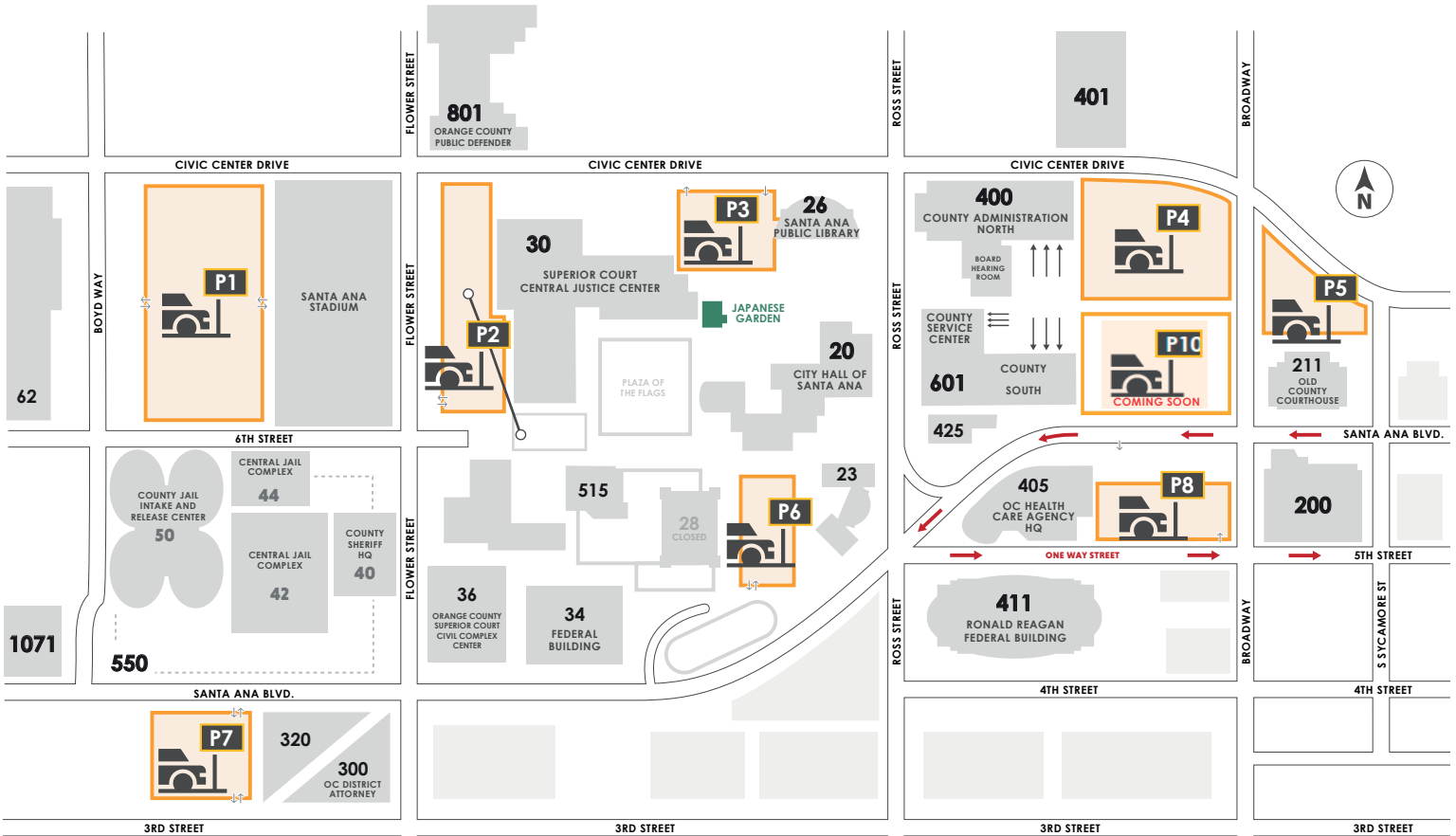


OC CIVIC CENTER
BUILDING & SERVICE DIRECTORY

SCAN QR CODE TO
DOWNLOAD MAP AND
ACCESS TRANSLATIONS



中文 한국어
Español Tiếng Việt



PARKING INFORMATION

P1 Stadium Parking Structure

1020 West Civic Center Drive

Hours & Payments

Cashier on Duty: 24/7/365

- Credit cards accepted at all exit lanes.
- Pay-on-Foot/Cash Payment Machine 24/7/365

P2 Super Block

West 6th Street at N. Flower Street

Hours & Payments

Cashier on Duty:

- Mon-Fri, 6:30 a.m. - 11:30 p.m.
- Credit cards accepted at all exit lanes.

P3 Courthouse/Library Parking Structure

690 West Civic Center Drive

Hours & Payments

Cashier on Duty:

- Mon-Fri, 5:30 a.m. - 9 p.m.
- Credit cards accepted at all exit lanes.
- Closed weekends, major holidays.

P4 CAN Surface Parking Lot

630 North Broadway Street

Hours & Payments

- Mon-Fri, 7 a.m. - 7 p.m.
- Credit cards accepted at exit column.
- Pay-on-Foot/Cash and Credit Payment Machine
- Closed weekends, major holidays.

P5 Historic Courthouse Metered Surface Parking Lot

Civic Center Dr. at Broadway (Entry/Exit at Civic Center Dr.)

Hours & Payments

- Mon-Sat, 8 a.m. - 10 p.m.
- Pay by credit card or by coin at meter.
- 2-hour maximum limit per stay.

P6 Appellate Court Parking Structure

601 W. Santa Ana Blvd. (Automated Entry/Exit at Parton/Santa Ana Blvd.)

Hours & Payments

- Credit cards accepted at all exit lanes.
- Pay-on-Foot/Cash Payment Machine 24/7/35

P7 Twin Towers Parking Structure

1002 West Santa Ana Boulevard

Hours & Payments

- Cashier on Duty: Mon-Fri 10:30 a.m. - 7 p.m.
- Office: Mon-Fri, 8 a.m. - 4:30 p.m.
- Credit cards accepted at all exit lanes.
- Rolling gates open Mon-Fri 5 a.m. - 7 p.m.
- Closed weekends, major holidays.

P8 Transit Tower Parking Structure

301 West 5th Street

Hours & Payments

- Cashier on Duty: Mon-Fri, 7 a.m. - 7 p.m.
- Credit cards accepted at all exit lanes.
- Rolling gates open Mon-Fri 7 a.m. - 7 p.m.
- Closed weekends, major holidays.



400

County Administration North (CAN) / Hall of Administration

400 West Civic Center Drive | (714) 834-2345

Board of Supervisors

- First District(714) 834-31 10
- Second District.....(714) 834-3220
- Third District(714) 834-3330
- Fourth District(714) 834-3440
- Fifth District(714) 834-3550

Clerk of the Board

- Assessment Appeals(714) 834-2331
- Board Services.....(714) 834-2206

County Counsel

(714) 834-3300

County Executive Office

- **Deputy County Executive Office**
Office of Care Coordination,
Performance Management & Policy
- **Human Resource Services**
Administrative Services, Central
Human Resource Services, Employee
Benefits, Employee & Labor Relations,
HRS Operations, Learning &
Organizational Development

- **Finance Office**
Finance & Budget, Procurement,
Public Finance, Risk Management

- **Government & Community Relations**
Administration & Special Projects,
Communications, Legislative Affairs

- **Real Estate Services**
Land Development, Infrastructure,
Transactions/Special Projects,
Lease Administration

OC Health Care Agency

ochealthinfo.com

Accounting, Authority & Quality Improvement Services, Information Technology,
Mental Health & Recovery Services, Purchasing

601

County Administration South (CAS) / County Service Center (1st Floor)

601 North Ross Street | (714) 667-8800

OC Clerk-Recorder

(714) 834-2500

- Document Recording Services
- Vital Records (Birth/Death/Marriage)
- Real Property Records
- Fictitious Business Name
- Notary Public/Oath Filing
- Environmental Impact Report
- Process Server
- Legal Document Assistance
- Professional Photo Copier
- Unlawful Detainer
- Passport Services

OC Community Resources

(714) 480-2788

OC Public Works

(714) 667-8800

- Building Permits
- Encroachment Permits
- Planning and Zoning
- Inspections
- Code Enforcement
- Permit Record Research
- Addressing
- Map and Parcel Record Research
- Flood Control

OC Waste & Recycling

(714) 834-4000

Treasurer-Tax Collector

(714) 834-3411

- Pay Property Tax
- Drop-Off Tract Map
- Mobile Home Tax Clearance Certificate

Internal Audit

(714) 834-5475

425

County Conference Center

425 West Santa Ana Boulevard



FEDERAL

34

Santa Ana Federal Building

34 Civic Center Plaza

411

Ronald Reagan Federal Building and United States Courthouse

411 West 4th Street

801

Internal Revenue Service

801 Civic Center Drive W.



STATE

23

4th District Court of Appeal

601 West Santa Ana Blvd.

515

Orange County Public Law Library

515 North Flower Street

30

Superior Court Central Justice Center

700 Civic Center Drive W.
• Civil, Criminal, Traffic



CITY

20

City Hall of Santa Ana

20 Civic Center Plaza
(714) 647-5400

26

Santa Ana Public Library

26 Civic Center Plaza

62

Santa Ana City Jail

62 Civic Center Plaza

DOWNLOAD THIS MAP AND ACCESS ONLINE TRANSLATIONS AT:

ocpublicworks.com/parking



中文 한국어
Español Tiếng Việt

Additional County Services

36

Orange County Superior Court Civil Complex Center

751 West Santa Ana Boulevard
(657) 622-6878

211

Old County Courthouse

211 West Santa Ana Boulevard
(714) 834-2500

- Marriage License, Civil Wedding Ceremonies, Archives
- Assessment Appeals Hearings
- Historical Commission

300

District Attorney

300 North Flower Street
(714) 834-3600

801

Orange County Public Defender

801 Civic Center Drive West, Suite 400
(657) 251-6090

OC Sheriff's Department

320

Professional Standards Div.

320 North Flower Street
(714) 834-5100

550

County Jail Intake and Release Center

550 North Flower Street

- OC Sheriff's Headquarters (40)
(714) 647-7000

- Central Jail Complex (42, 44)
- County Jail Intake and Release Center (50)
(714) 647-4666

1071

Coroner Division

1071 W. Santa Ana Boulevard
(714) 647-7400

OC Health Care Agency

200

Office of Vital Records, Custodian of Records and California Children Services

200 West Santa Ana Boulevard
(714) 480-6700

401

OC Links

401 West Civic Center Drive
(855) 625-4657

405

Headquarters

405 West 5th Street
ochealthinfo.com



**COUNTY OF ORANGE
COUNTY EXECUTIVE OFFICE**

400 W. Civic Center Drive
Santa Ana, CA 92701
(714) 834-2345

[OCGOV.COM/PLATFORM](https://ocgov.com/platform)