



2023-2024 LEGISLATIVE PLATFORM





TABLE OF CONTENTS

Introduction	1
Background	2
Supervisory District Map	3
Guiding Principles	4
Property Tax Allocation	5
Key Initiatives	6
• OC CARES	7
• Veterans Services	18
• Master Plan for Aging	20
• County Community Service Center	22
Legislative Program Area Matrices	24
• Public Protection	25
• Community Services	27
• Infrastructure and Environmental Resources	31
• General Government Services	36
Civic Center Directory	39

INTRODUCTION

The Orange County Board of Supervisors recognizes the need to identify and advocate for its legislative and funding priorities in Sacramento and Washington, D.C. To be effective in this mission, the Board is pleased to present its 2023-2024 Legislative Platform.

This document includes the Board's top state and federal legislative priorities and new bill requests for which legislators are sought to carry proposed legislation on the County's behalf. It also provides general direction to the County Executive Office and County departments, legislative advocates, state and federal delegation members and the public on positions of support or opposition to key policy initiatives which impact the way the County does business.

As the Legislative Platform is approved prior to the beginning of each two-year state and federal legislative session, it is not always possible to anticipate additional legislative, regulatory and/or budgetary issues that may arise at a later date. Thus, the Board may review and modify this document during the two-year legislative session as necessary.



BACKGROUND

Incorporated in 1889, the County of Orange spans nearly 800 square miles and includes 42 miles of coastline. There are 34 cities in the County and several unincorporated areas. Of the 58 counties in California, Orange County ranks third in population with more than 3 million people. It is also the fifth-most populous county in the United States.

A five-member Board of Supervisors, each elected to four-year terms in district nonpartisan elections, serves as the legislative body of the County, which functions under a Charter adopted in 2002. The Board governs the following:

All Assessment Districts, All Community Facilities Districts, All Reassessment Districts, Housing and Community Development Commission, Housing Successor Agency to the Orange County Development Agency, In-Home Supportive Services Public Authority, Industrial Development Authority For Orange County, Local Redevelopment Authority, Former Marine Corp Air Station (MCAS) El Toro, Orange County Financing Authority, Orange County Flood Control District, Orange County Housing Authority, Orange County Housing Authority Acting As the Housing Successor Agency, Orange County Public Financing Authority, Orange County Special Financing Authority, South Orange County Public Financing Authority, and the Successor Agency to the Orange County Development Agency.

The County is a regional service provider committed to maximizing resources and improving the quality of life for its residents. The County's primary goal is the effective and efficient delivery of services of its core business areas: Aviation, Environmental Protection, Public Assistance, Public Health, Public Safety, Regional Planning and Social Services. There are 23 agencies and departments including:

Assessor*, Auditor-Controller*, Board of Supervisors*, Child Support Services, Clerk of the Board, Clerk-Recorder*, County Counsel, County Executive Office, Ethics Commission, District Attorney – Public Administrator*, Health Care Agency – Public Guardian, Office of Independent Review, Internal Audit, John Wayne Airport, OC Community Resources, OC Public Works, OC Waste & Recycling, Probation, Public Defender, Registrar of Voters, Sheriff-Coroner*, Social Services Agency and Treasurer-Tax Collector*. (* indicates elected official departments)

The County Executive Officer is appointed by the Board and directs the County's day-to-day government operations. The Chief Financial Officer is responsible for presenting the Board with a Recommended Budget for consideration of adoption as the Final (Adopted) Budget, which serves as the foundation of the County's financial planning and control. The County employs approximately 18,500 permanent full-time employees and the Total Budget for FY 2021-22 is \$8.8 Billion.





COUNTY OF ORANGE

SUPERVISORIAL DISTRICT MAP

1ST DISTRICT

Cities:

Cypress, Fountain Valley,
Garden Grove*, Huntington
Beach, La Palma, Los Alamitos,
Seal Beach, Westminster

Unincorporated Areas:

Midway City, Rossmore

2ND DISTRICT

Cities:

Anaheim*, Garden Grove*,
Orange*, Santa Ana, Tustin*

Unincorporated Areas:

North Tustin*

3RD DISTRICT

Cities:

Anaheim*, Irvine*, Lake Forest,
Mission Viejo, Orange*,
Rancho Santa Margarita,
Tustin*, Villa Park, Yorba Linda

Unincorporated Areas:

Modjeska, North Tustin*, Silverado,
Trabuco Canyon, Williams Canyon

4TH DISTRICT

Cities:

Anaheim*, Brea, Buena
Park, Fullerton, La Habra,
Placentia, Stanton

5TH DISTRICT

Cities:

Aliso Viejo, Costa Mesa,
Dana Point, Irvine*, Laguna
Beach, Laguna Hills, Laguna
Niguel, Laguna Woods,
Newport Beach, San Clemente,
San Juan Capistrano

Unincorporated Areas:

Coto de Caza, Ladera Ranch,
Las Flores, Rancho Mission Viejo



*City/CDP split by district.



GUIDING PRINCIPLES

The Board's four guiding principles are reflected throughout the 2023-2024 Legislative Platform:

Local Government Funding/Cost Recovery

The County supports efforts to require the state or federal government to fully reimburse the County for all costs related to mandated programs, particularly costs incurred from COVID-19. The County will oppose efforts to raise local taxes to pay for new state or federal programs, efforts to redirect existing revenue streams away from mandated programs administered by the County, or expansion of service provisions without commensurate funding.

Operational Efficiency

The County supports proposals that encourage utilizing technology and innovation to streamline County Services. Furthermore, changes to state or federal law must not negatively impact the County's operational efficiency, and the County strongly supports efforts to eliminate unnecessary, redundant, or overlapping requirements or regulations for program eligibility, funding maintenance of efforts, monitoring, permitting or reporting.

Local Control

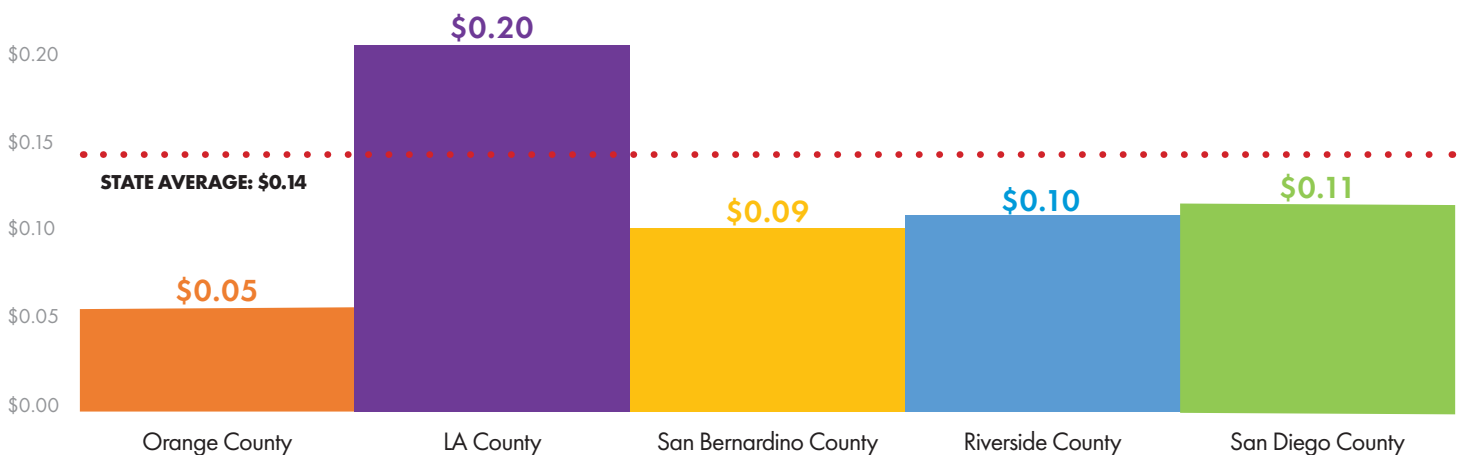
The County supports efforts that maintain local discretionary control over its governance issues and delivery of services. This includes having flexibility to administer federal, state or local funding and programs, as well as maintaining decision-making authority over local land use.

Funding Equity

The County supports equitable, dependable and predictable revenue streams to local governments that address equity among counties based on specified metrics.



PROPERTY TAX ALLOCATION



In 1978, Assembly Bill 8 set the formula for each California County's property tax allocation based on population. Since then, Orange County's population has nearly doubled, but our property tax allocation remains unchanged. Property tax revenue is Orange County's largest source of income for funding mandated and discretionary programs for its residents. As of 2021, Orange County receives five cents of every property tax dollar, the lowest amount of all its peers.



KEY INITIATIVES

Orange County continues to be at the forefront of delivering public services through the development of innovative and collaborative programs. These key initiatives are identified and established by aligning strategic priorities as well as emerging issues. These initiatives include:

- **OC CARES**
- **Veterans Services**
- **Master Plan on Aging**
- **County Community Service Centers**



OC CARES



The OC CARES system links the various systems of care in the County of Orange to provide full care coordination and services for justice-involved individuals to successfully reenter society and work towards self-sufficiency.

These systems of care include behavioral health, healthcare, community corrections, housing, and benefits and support services. This innovative approach was developed through stakeholder involvement and efforts led by the Orange County Criminal Justice Coordinating Council (OCCJCC).

2025 VISION

To ensure a thorough examination of Orange County's criminal justice system, OC CARES is implementing the 2025 Vision conceptualized by the five pillars below. Each pillar is made up of overarching goals assigned to specific departments to provide inmates and at-risk individuals with the services they need within the community corrections system.



Prevention: Public informational campaigns and interventions that help divert people from involvement in the criminal justice system

Courts: Coordination between County agencies and the courts to make data driven decisions when planning expansions of services and diversion

In-Custody: Mental health and substance use programs, linkages to post custody services, as well as trainings and education to prepare people for reentry

Reentry: A comprehensive system that ensures continuity in treatment for mental health and substance use disorders including resources and assistance to promote a positive transition back into the community

Juvenile and Transitional Age Youth (TAY): Expansion of mental health services, substance use treatments, and stable housing options for juveniles and TAY who are high risk of being justice-involved



OC NAVIGATOR

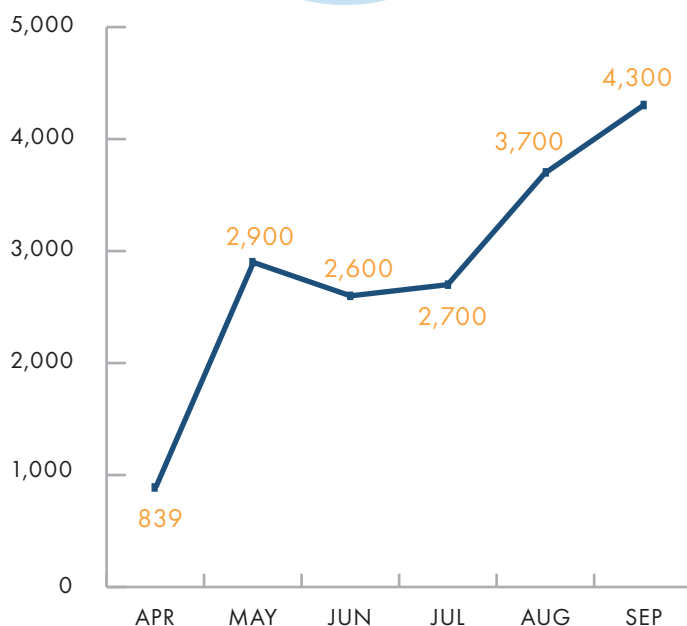
OC Navigator is an online resource navigation tool where community members and local agencies can search for local mental wellness and social services. The OC Navigator was developed collaboratively with Orange County Health Care Agency's (HCA) Mental Health and Recovery Services (MHRS) Innovation Department, Chorus Innovation staff and community stakeholders, and is funded by the Mental Health Services Act.

Since the launch of the OC Navigator webpage in April 2022 there have been more than 16,000 new and returning webpage visitors and 353,000 page views of self-guided wellness tips and tools, and local mental health and other resources.

For more information, visit ocnavigator.org

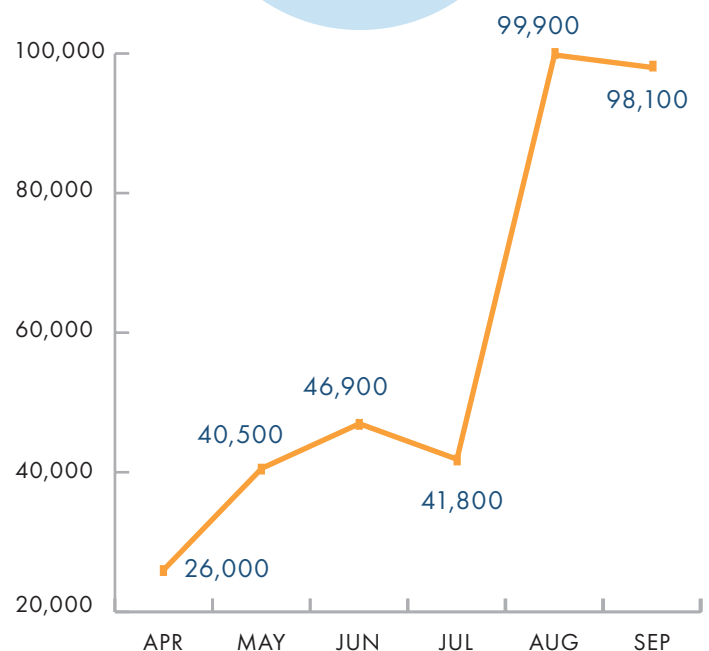
Webpage Visitors

16,000+
NEW & RETURNING
WEBPAGE VISITORS



Webpage Views

353,000+
PAGE VIEWS

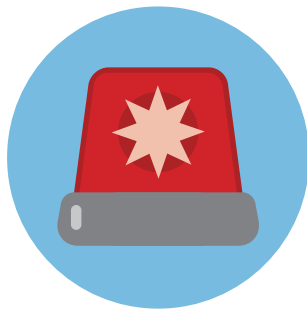


CRISIS INTERVENTION TRAINING

Orange County has worked to establish a robust multi-response behavioral health-based law enforcement program to address response calls involving individuals with mental health disorders. Crisis Intervention Training (CIT) provides behavioral health trainings for first responders in Orange County including law enforcement officers, public safety dispatchers, campus safety officers, emergency medical services personnel, firefighters, paramedics and many more working in the community. CIT teaches first responders how to recognize signs and symptoms of mental illness as well as de-escalation techniques during a mental health crisis.

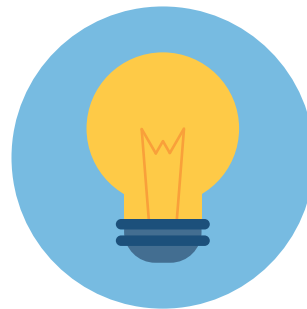
The County is currently expanding programming on CIT training for dispatchers to incorporate 911 Diversion. This aligns with California's rollout of the 988 Suicide and Crisis Lifeline.

1,563



ACTIVE LAW ENFORCEMENT &
FIRST RESPONDERS TRAINED

98%



GAINED NEW KNOWLEDGE

400 +



TOTAL HOURS
OF TRAINING

100%



OCSD SWORN AND
DISPATCHING STAFF ARE
CIT TRAINED



The Orange County Board of Supervisors has prioritized transforming Orange County's approach to behavioral health through the Be Well Orange County initiative, a coalition between the County and behavioral health stakeholders in the private and public sectors, including CalOptima, major hospitals, non-profits, and academic and faith-based organizations.

Be Well Orange County educates the community and provides easy access to services through the establishment of behavioral health campuses open to any county resident, regardless of payor. These campuses are also available to law enforcement as an alternative to arrest, to divert those experiencing a behavioral health crisis toward treatment.

The first behavioral health campus opened in the city of Orange in April 2021 through a public-private partnership. The campus provides a triage unit, psychiatric intake and referral, substance use disorder intake and referral, withdrawal management, transitional residential services, residential treatment services and an integrated support center that will provide linkages with complimentary community and social support services. The campus also provides the first youth crisis stabilization unit (CSU) in the County.

A site in Irvine has been identified as the second location for the Be Well South campus to be established through a public-private partnership. The Board of Supervisors directed that one building be designated as the Orange County Behavioral Health Families and Children's Campus, which will deliver coordinated mental health services, support and resources to children and their family members.

For more information, visit BeWellOC.org

January 2019

Public and private partnership established with CalOptima, Mind OC, and local hospital systems



February 2018

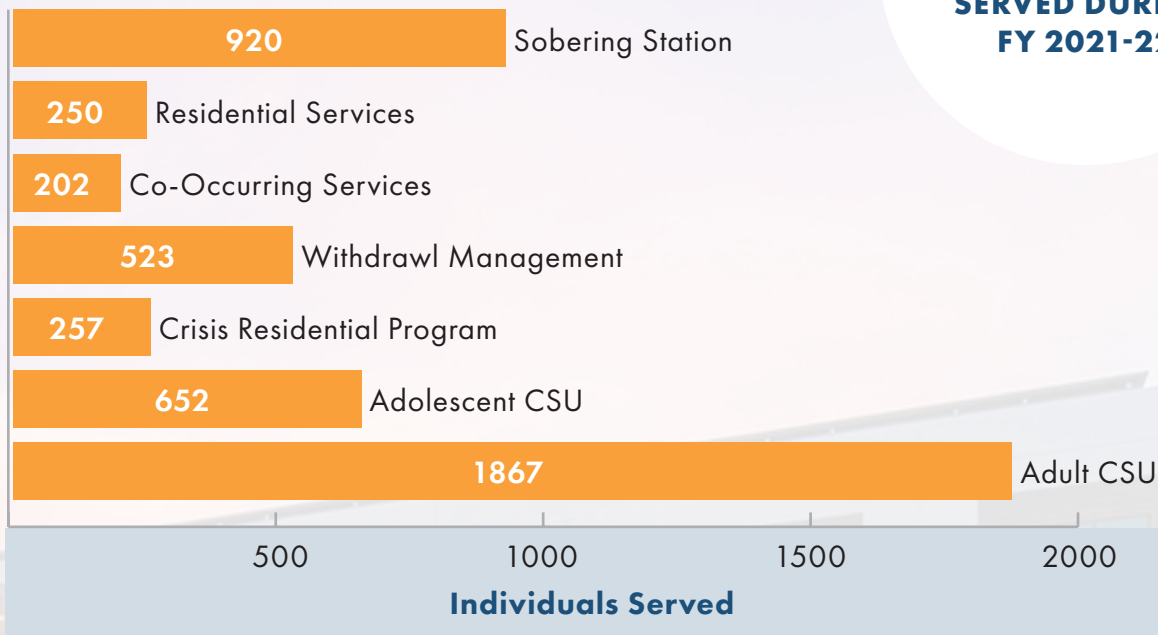
Orange County purchased 2.10-acre property for Be Well Orange Campus



October 2019

Groundbreaking of Be Well Orange Campus

Be Well Service Utilization



4,500+
**INDIVIDUALS
SERVED DURING
FY 2021-22**

September 2020

County-owned property in Irvine
dedicated for second campus

2023

Anticipated groundbreaking
of Be Well South Campus



January 2021

Be Well Orange Campus opened





HEALTHCARE

HEALTHCARE

Orange County has extended efforts to bolster the Healthcare System of Care and in particular for the justice-involved population. This includes the addition of a Diabetic Educator nurse that provides education, care management and linkage to post-custody services that ensures diabetic inmates stay on track with appropriate treatments to prevent the progression of the disease. Additionally, the County is continuing to expand chronic care management by nursing staff to treat other diseases prevalent in this population, such as asthma, hepatitis C, HIV and cardiovascular disease. In 2023 the Public Health team will be supporting the implementation of the new Street Medicine Program which will service the homeless population.

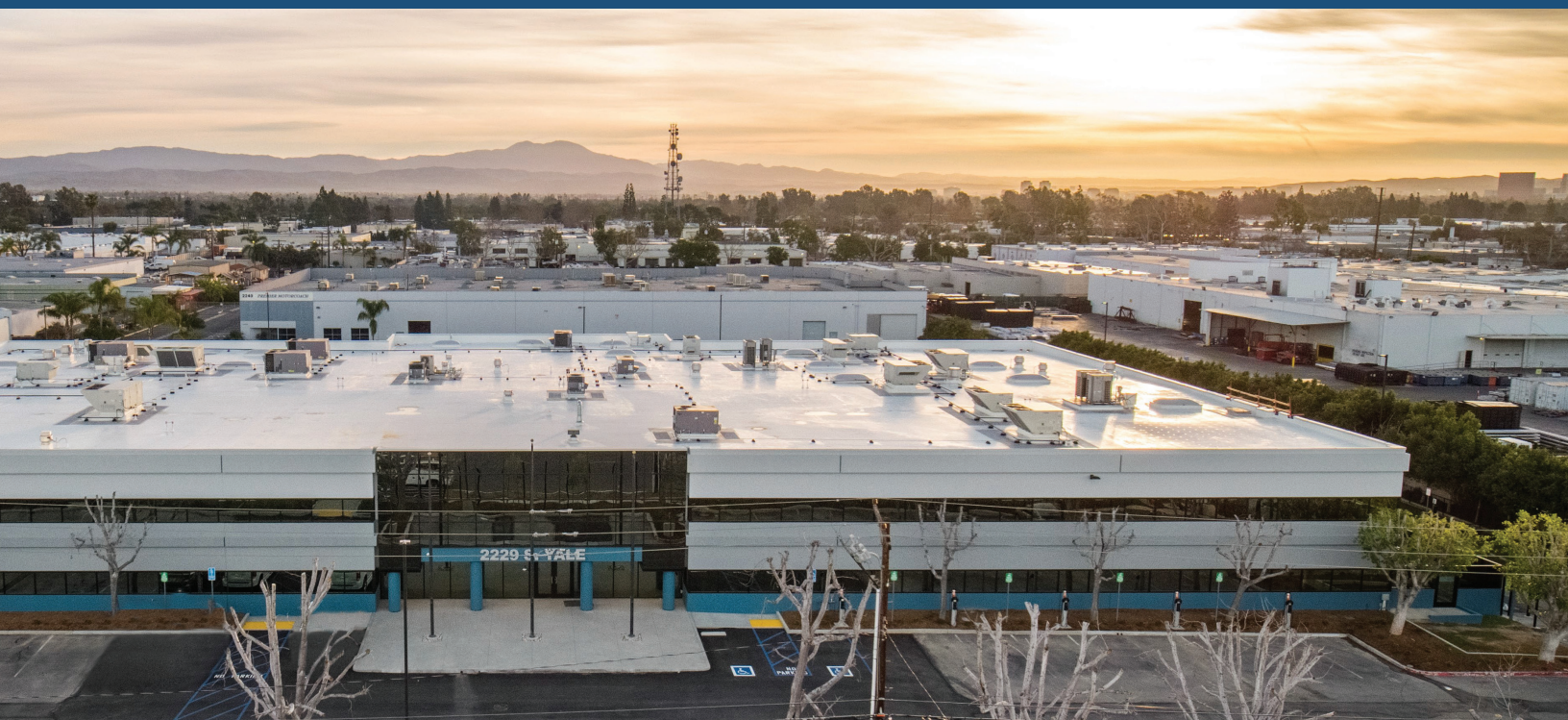




COMMUNITY CORRECTIONS

Orange County has been on the forefront of developing a comprehensive, multi-agency juvenile justice plan to develop a continuum of responses for the prevention, intervention, supervision, treatment and incarceration of juvenile offenders.

Opened in November 2022, the Multipurpose Rehabilitation Center (MRC) addresses the needs of the juvenile and transitional age youth (TAY) within the community corrections system of care. The MRC expands the programs and treatments provided by various County stakeholders and community partners and offers youth the opportunity to learn a variety of educational, vocational and life skills. The facility consists of several classrooms for programming space, an auto shop, a gymnasium, a fitness center, a multipurpose room that can also be used for youth to visit with their families, an interview room, a childcare room, and a food preparation station. The MRC combines the importance of family and community to engage in youth's rehabilitation and prepare them for successful reentry into the community.



HOUSING



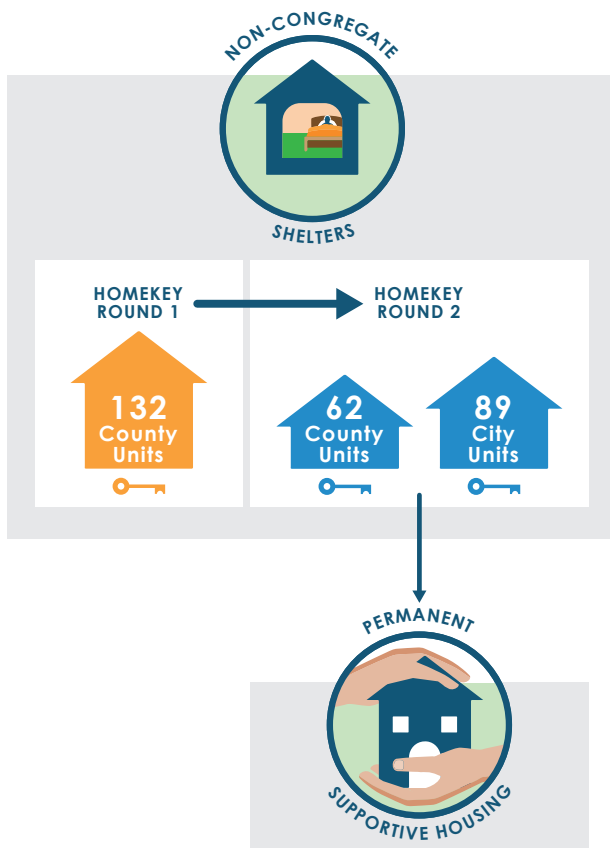
The County has invested in the development of regional navigation centers that provide year-round emergency shelter to individuals experiencing

capacity through the Homekey Program. The Homekey Program prioritizes the placement of vulnerable individuals at high-risk for COVID-19 complications due to being elderly and/or having underlying health conditions who are experiencing homelessness.

homelessness and supportive services to assist individuals in accessing available housing resources. The County operates Bridges at Kraemer Place, a 200-bed program located in Anaheim that serves the North Service Planning Area, and the Yale Navigation Center, a 425-bed program located in Santa Ana that serves the Central Service Planning Area. Additionally, the County provides funding to non-profit operated emergency shelter programs to serve individuals, families, and transitional aged youth experiencing homelessness throughout Orange County.

In partnership with the state and local cities, the County has been actively expanding interim housing and permanent supportive housing

- The County was awarded round one of state funding to establish 132 units of non-congregate shelter.
- The County was awarded round two of state funding for a project that created 62 County units of non-congregate shelter. The County also partnered with the city of Anaheim to create an additional 89 units of non-congregate shelter.
- All units will be converted to permanent supportive housing at a later date.



The County has had success in pairing housing choice vouchers and/or special purpose vouchers with housing navigation and support services to reduce barriers to housing for individuals and families experiencing homelessness. This approach has also allowed the County to develop landlord engagement strategies and increase the network of housing resources.

The County is continuing its 2018 Housing Funding Strategy to develop 2,700 units of supportive housing. Since this goal was created, 1,643 units have been established, and these are in different stages of development. Furthermore, the County has committed to achieving an additional 2,700 units of general affordable housing. Thus far, 2,144 units have been completed.



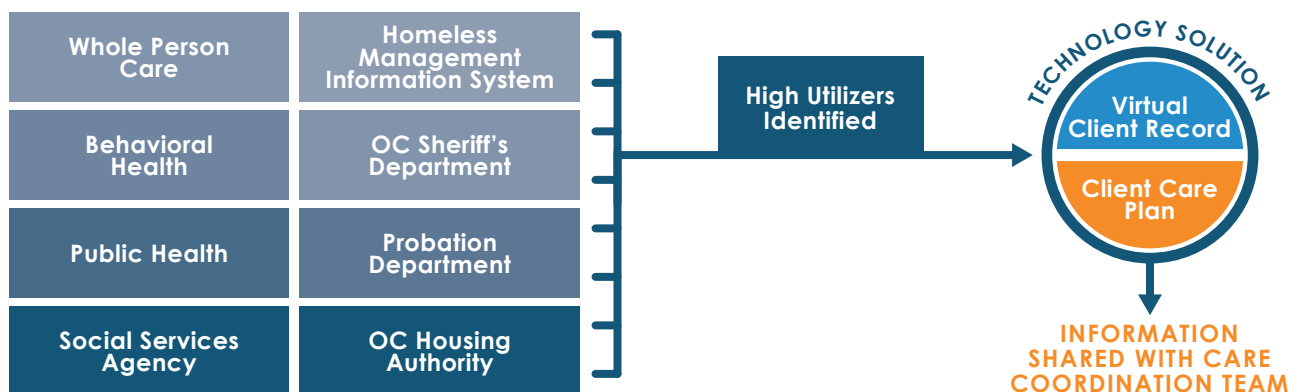
GOALS



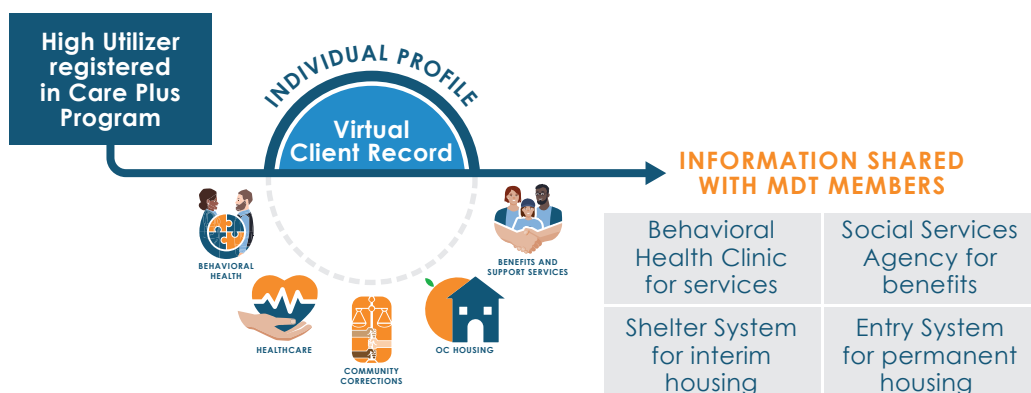
**BENEFITS AND
SUPPORT SERVICES**

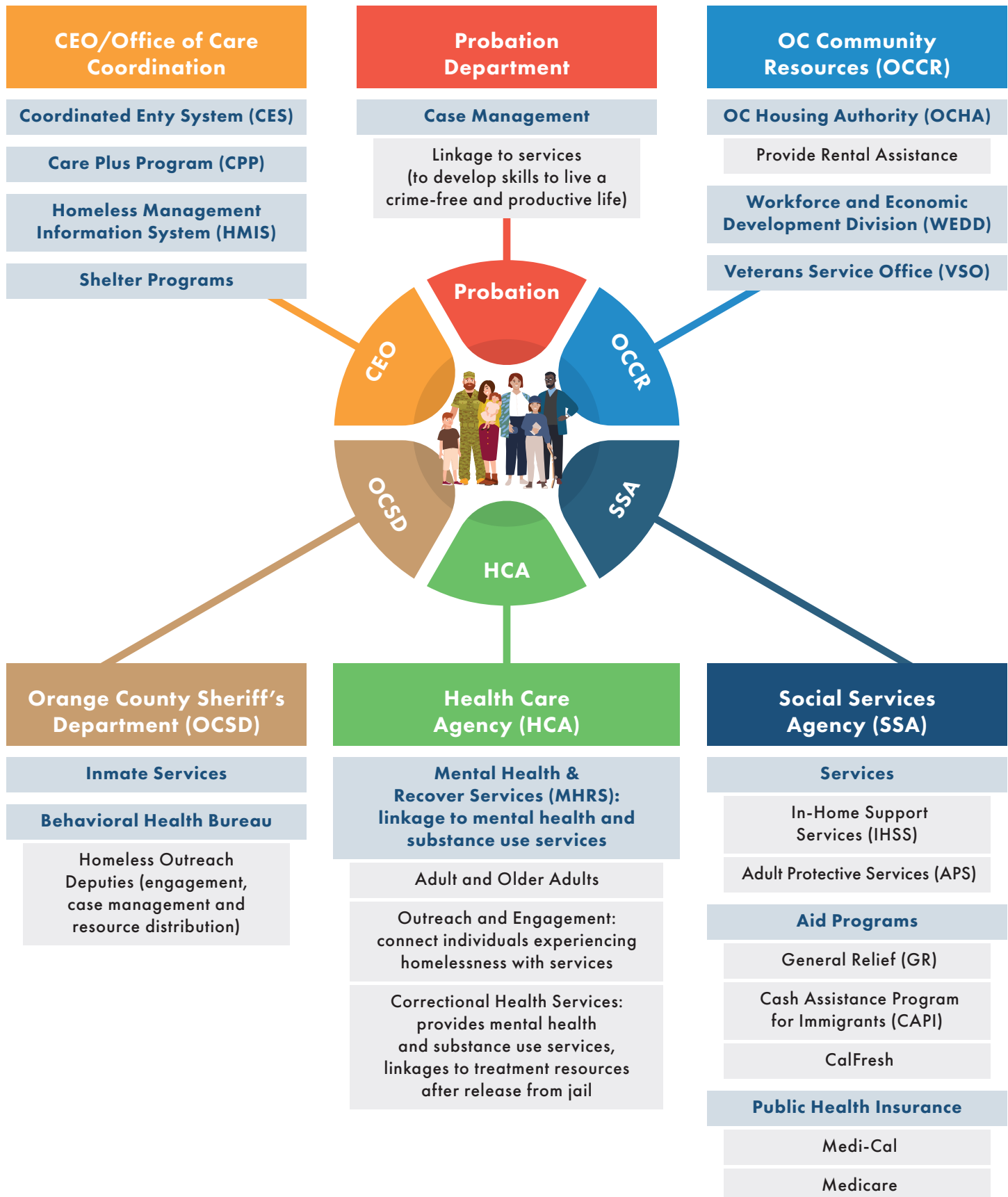
BENEFITS AND SUPPORT SERVICES

The System of Care Data Integration System (SOCDIS) project integrated nine databases to create one Virtual Client Record with a client's demographics, program history and service utilization. Interdepartmental data and information sharing is facilitated by a Multi-Disciplinary Team (MDT) that meets twice a month to coordinate care for high utilizers accessing County services/programs. High utilizers are defined as those found in four or more databases across the County. Additional criteria are considered for MDT and care coordination for targeted segments of the population with high barriers.



The innovative Care Plus Program (CPP) offers a comprehensive approach to service delivery for Orange County's most vulnerable clients. Regardless of an individual's point of entry into the criminal justice system, the CPP will connect them to the appropriate services and resources across Behavioral Health, Corrections, Healthcare, Housing and Homelessness, and Benefits and Supportive Services.





VETERANS SERVICES

The Orange County Board of Supervisors is committed to providing resources and assistance to our veterans of the United States Armed Forces and their dependents through the Orange County Veterans Service Office (VSO). The Board has approved an overall increase to the VSO budget for the past three years, allowing it to continue working collaboratively with nationally chartered veterans organizations, the Department of Veterans Affairs and others to assure our brave service men and women receive the entitlements they have earned for their military service.

The VSO has developed a platform that allows veterans and their dependents to self-schedule, cancel and modify appointments with a Veterans Claims Representative to discuss their benefits. Additionally, the VSO implemented an online application to simplify and expedite the process for submitting and processing College Fee Waivers (CFW). This new process allows eligible dependents the opportunity to fully complete their CFW application virtually.



30,000 veterans and their families served

Resulting in **\$9 million** in compensation and benefits to our veterans for the fiscal year 21-22



Submitted over **2,600** College Fee Waivers (CFW) totaling more than **5.4 million** in fiscal year 21-22



A rendering of the Veterans Cemetery (Courtesy of the OC Cemetery District).

ORANGE COUNTY VETERANS CEMETERY

Home to former Army, Navy, and Marine bases and an estimated 105,000 veterans, Orange County is California's largest county without a veterans cemetery. Orange County veterans have advocated for almost a decade to build a State Veterans Cemetery in Orange County.

On July 27, 2021, the Orange County Board of Supervisors unanimously approved allocating \$20 million exclusively for site development of a veterans cemetery at Gypsum Canyon in Anaheim Hills and adopted a resolution to move forward with planning and developing a site to honor and respect the men and women who served our country. The Board previously allocated over 200 acres of county-owned land at Gypsum Canyon, which has been deeded to the Orange County Cemetery District (OCCD).

With the support of all 34 Orange County cities, a bipartisan majority of Orange County state and federal delegation members, numerous veterans organization leaders, and more than 140 local elected officials, the Board sponsored Assembly Bill 1595 (Quirk-Silva) allow the California Department of Veterans Affairs (CalVet) to study, acquire, design, develop, and construct a state-operated veterans cemetery in Orange County. AB 1595 became law on September 28, 2022, and the County is coordinating with CalVet on an acquisition study at the Gypsum Canyon site. Upon successful completion of the study, the land at Gypsum Canyon will be transferred to CalVet who will begin the design, development and construction.



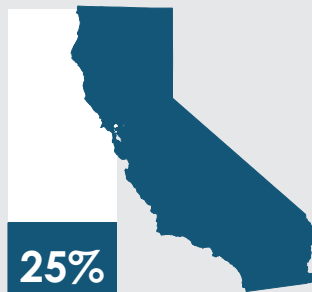
MASTER PLAN FOR AGING

Orange County continues to champion the five overall goals and objectives of California's Master Plan for Aging. As the state's over-60 population grows, the County believes it is imperative to implement effective strategies that provide a proactive approach to supporting older adults navigating complex systems of care.

"Aging is changing and it's changing California. California's faster than any other age group. By 2030, 10.8 million Californians will be an older adult, making up one-quarter of the state's population."

—California Master Plan for Aging

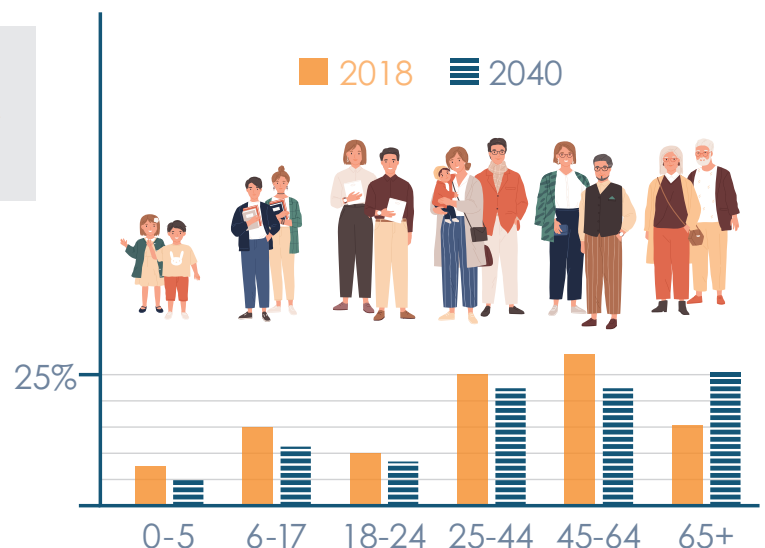
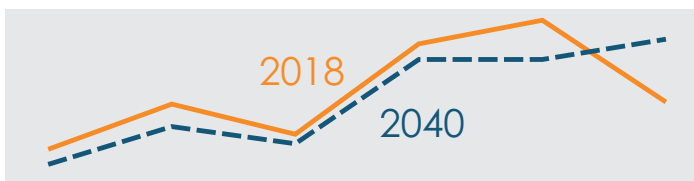
CURRENT POPULATION
OVER 60 IN CALIFORNIA



PROJECTED POPULATION OVER
60 IN ORANGE COUNTY IN 2030



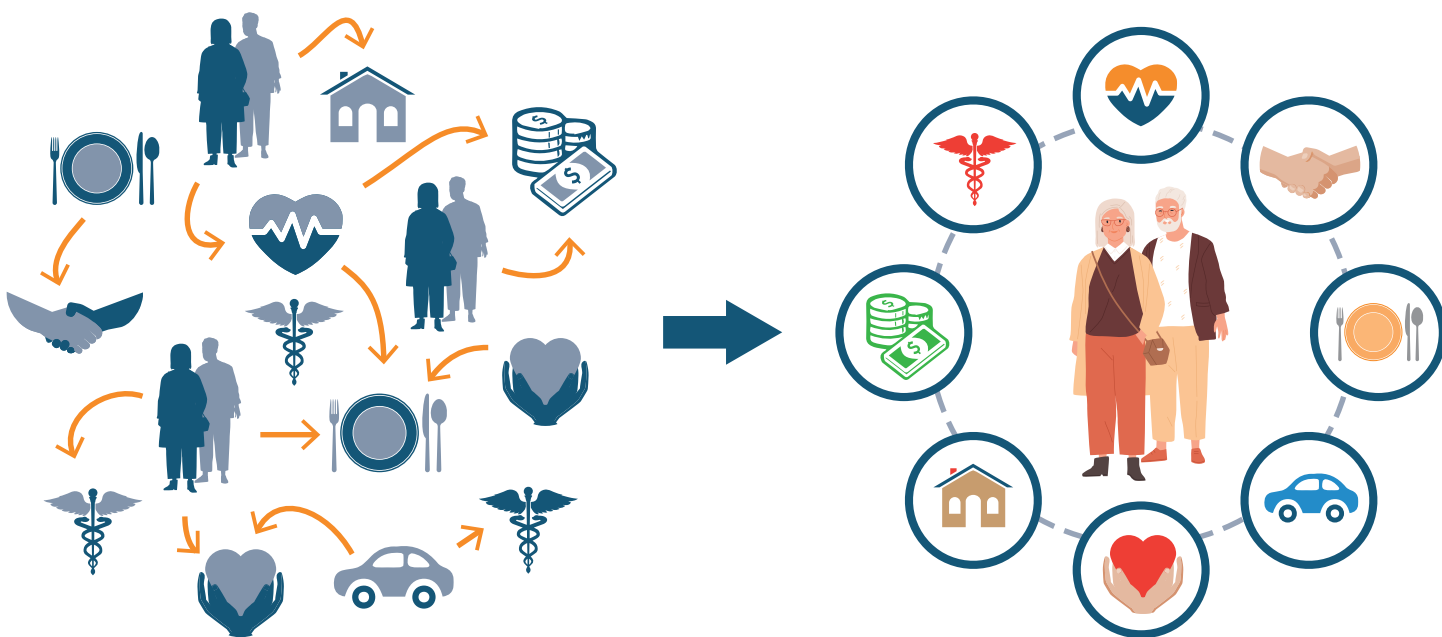
Orange County Population



In 2022 the County sponsored Senate Bill 1342, to allow counties to create a Multi-Disciplinary Team (MDT) among local aging service provider agencies. This holistic approach will address the needs of the older adult population, including developing coordinated case plans for wrap-around services, providing support to caregivers and improving service delivery. SB 1342 was signed into law and beginning in 2023, an Aging Cohort will be added to the County's System of Care Data Integration (SOCDIS). The MDT will work collaboratively to meet the changing needs and demands of the aging population.



The County will also conduct a comprehensive, county wide health aging assessment initiating in January 2023. The assessment will be used to draft a County plan that identifies and prioritizes the needs and factors affecting the health of our aging population and consider input from caregivers and partner agencies. The assessment will help the County understand the holistic needs of the older demographic by providing an in-depth look at the areas of greatest need, current barriers to accessing services, and identifying gaps. This effort will guide future coordination and collaboration within the County as well as with outside stakeholders.



COUNTY COMMUNITY SERVICE CENTER

The County Community Service Center (CCSC) is a “one-stop shop” providing assistance to Orange County residents on everything from healthcare to housing to services for older adults and children alike. The Orange County Social Services Agency, OC Housing Authority, Office on Aging, OC Health Care Agency, CalOptima and other county and community-based partners serve clients from the CCSC. The mission of the CCSC aligns with the County’s overall vision of integrating services to ensure the health and safety of Orange County residents. The new navigation team serves as the initial point of contact for all clients.

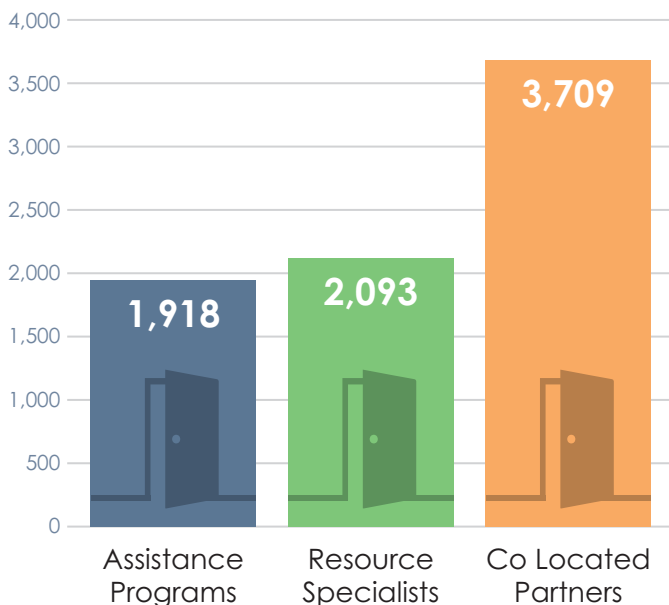
Navigators assess client needs and triage to either Assistance Programs, Community Resource Specialists or one of the Community Based

Partners. Assistance Programs support new applications for CalFresh, General Relief and Medi-Cal. Community Resource Specialists aid clients who require linkages and referrals to programs and services not available at the CCSC. The specialists engage in follow up and follow through for clients as needed.

Services include, but are not limited to:

- Services for Older Adults
- Access to Health Care
- Public Safety Net Services
- Referrals for Mental and Behavioral Health Services
- Affordable Housing
- Property Tax Breaks and Utility Assistance
- Children’s Services

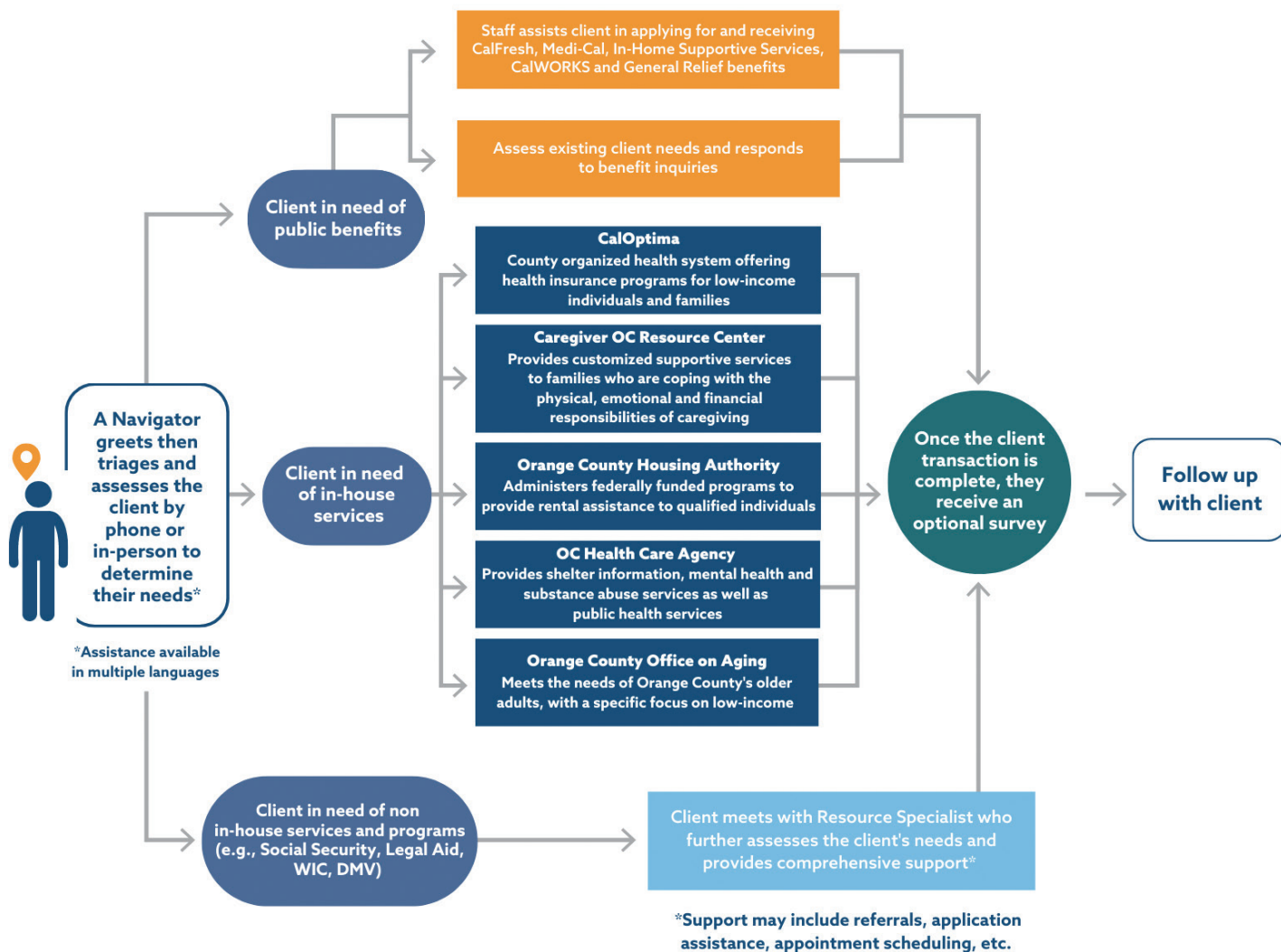
Walk-in Client Inquiries (in the first 6 months)



Total Clients Served (in the first 6 months)



County Community Service Center Workflow





2023-2024

Legislative Platform

Legislative Program Area Matrices

LEGISLATIVE PROGRAM AREA MATRICES





PUBLIC PROTECTION

ISSUE	SUMMARY / ACTION ITEM	DEPARTMENT	STATE/FEDERAL
Aging Juvenile Facilities	Support efforts to improve existing juvenile facilities and provide resources for infrastructure changes required by legislative mandates.	<i>Probation</i>	<i>State</i>
Appeals Process	Support reforms to streamline the appeals process in criminal cases, including those cases involving special circumstances.	<i>District Attorney</i>	<i>State</i>
Court Appointed Dependency Counsel Funding	Support legislation or administrative action to fully fund optimal caseloads for dependency attorneys.	<i>Public Defender</i>	<i>State</i>
Court Security	Support funding for court security efforts.	<i>County Executive Office</i>	<i>State/Federal</i>
Court Services	Support measures that increase accessibility to court-related services for vulnerable adults and at-risk youth.	<i>Social Services Agency</i>	<i>State/Federal</i>
Criminal Justice Sentencing	Support restoration of accountability to the criminal justice system by ensuring sentences are fully carried out and sufficiently addresses the significance of each crime.	<i>Sheriff's Department/County Executive Office/District Attorney</i>	<i>State/Federal</i>
Custody Operations	Support funding for construction, modernization, and staffing of adult criminal justice facilities that will meet needs created by realignment and address long-term sentences in county jails.	<i>Sheriff's Department</i>	<i>State</i>
Cyber-Crime	Support efforts to assist law enforcement in combatting cyber-crime and promote programs that increase cybersecurity awareness.	<i>Sheriff's Department</i>	<i>State/Federal</i>
Driving Under the Influence	Support efforts to increase penalties for driving under the influence, as well as resources that promote efforts to prevent driving under the influence.	<i>County Executive Office/District Attorney</i>	<i>State</i>
Fusion Center	Support increased federal and state funding for fusion centers.	<i>Sheriff's Department/District Attorney</i>	<i>State/Federal</i>
Homeland Security	Support increased coordination on homeland security and emergency response efforts among federal, state, and local governments with clearly defined roles and responsibilities for each.	<i>Sheriff's Department/District Attorney</i>	<i>State/Federal</i>
Human Trafficking	Support efforts to prevent sexual assault, human trafficking and related crimes.	<i>County Executive Office/District Attorney/Social Services Agency</i>	<i>State/Federal</i>
Juvenile Justice Interventions	Oppose proposals that would impede the ability to effectively provide treatment services and supervision to youth at their first point of entry into the juvenile system, and support measures that increase funding and resources needed to effectively meet the treatment needs of youth and implement statewide juvenile justice reforms.	<i>Probation</i>	<i>State</i>
Law Enforcement Collaboration	Oppose efforts to restrict local law enforcement from collaborating with state and federal agencies on addressing shared public safety threats.	<i>Sheriff's Department</i>	<i>State/Federal</i>
Marijuana Regulation Enforcement	Support adequate resources to address enforcement issues related to marijuana.	<i>Sheriff's Department</i>	<i>State/Federal</i>
Marsy's Law	Seek funding for Marsy's Law victim services.	<i>County Executive Office/District Attorney</i>	<i>State</i>



PUBLIC PROTECTION

ISSUE	SUMMARY / ACTION ITEM	DEPARTMENT	STATE/FEDERAL
Opioid Epidemic	Support efforts to address the illicit use of opioids, including fentanyl, by holding accountable drug traffickers, stopping the flow of narcotics across the border and disrupting the use of social platforms to illegally sell and distribute.	<i>Sheriff's Department/District Attorney</i>	<i>State/Federal</i>
Public Administrator	Support legislation or administrative action, which would reaffirm existing authority under Probate Code section 2900-2903, authorizing the Public Administrator to access vital information from financial institutions allowing deputies to properly administer their cases.	<i>District Attorney</i>	<i>State</i>
Public Administrator Judicial Responsibilities	Support legislation or administrative action which would emphasize the importance of the Public Administrator's judicial responsibilities under Probate Code section 7600-7604, authorizing deputies to perform duties to protect individuals and potential victims.	<i>District Attorney</i>	<i>State</i>
Public Safety	Support a public safety system that promotes local law enforcement services, crime prevention, prosecution of crime, confinement of high-risk adults, and evidence-based programs aimed at rehabilitation and lowering the recidivism rate.	<i>County Executive Office/District Attorney/Health Care Agency</i>	<i>State/Federal</i>
Public Safety Realignment	Protect existing funding and support continued funding for AB 109 public safety realignment.	<i>County Executive Office/District Attorney</i>	<i>State</i>
Recidivism	Support funding for recidivism reduction efforts in adult and juvenile offenders, further enhancing the county's ability to collaborate with and expand funding for partnerships with non-governmental/community-based organizations.	<i>County Executive Office/Probation/District Attorney</i>	<i>State/Federal</i>
Treatment Capacity	Support funding for both in-custody and out-of-custody programming and facilities in order to enhance the County's rehabilitation and treatment programs for inmates and out-of-custody defendants. Protect existing sources of revenue that fund critical inmate programs including mental health and collaborative courts.	<i>County Executive Office/District Attorney/Health Care Agency/Sheriff's Department</i>	<i>State/Federal</i>
Victims' Rights	Support victims' rights programs and services for victims of crimes.	<i>County Executive Office/District Attorney</i>	<i>State</i>



COMMUNITY SERVICES

ISSUE	SUMMARY / ACTION ITEM	DEPARTMENT	STATE/FEDERAL
Adult Services	Support efforts to increase resources and services available to adults who are unable to live independently, or who are victims or at-risk of abuse/neglect, and the individuals who provide them with care.	<i>Social Services Agency</i>	<i>State/Federal</i>
Adult Services Evaluations	Support efforts to remove obstacles to the efficient and thorough assessment of allegations of abuse and neglect of adults who are unable to live independently or are at-risk of abuse/neglect.	<i>Social Services Agency</i>	<i>State/Federal</i>
Affordable Care Act	Support health care policy implementation efforts that do not have an adverse financial impact on the County.	<i>County Executive Office</i>	<i>Federal</i>
Animal Care Shelter	Support funding for regional animal shelter facility maintenance and programs.	<i>OC Community Resources</i>	<i>State</i>
Animal Cruelty	Support stronger penalties for those convicted of animal abuse.	<i>OC Community Resources</i>	<i>State</i>
Caseload Growth and Funding for Services	Secure equitable and consistent funding to sufficiently support caseload growth, regulatory changes, and other related administrative costs.	<i>Social Services Agency</i>	<i>State/Federal</i>
Child Care	Support measures that enhance the overall quality, affordability, capacity, accessibility, and safety of childcare and development programs.	<i>Social Services Agency</i>	<i>State/Federal</i>
Child Support Services Funding	Support proposals to fully fund county child support collection program costs; increase funding for local child support service programming including the costs of administering mandated child support, paternity, and medical needs services; and ensure the equitable allocation of funding to Local Child Support Agencies and protect local control.	<i>Child Support Services</i>	<i>State</i>
Child Support Debt/Arrearages	Support legislation that ameliorates the impact to low-income parents through efforts that include the reduction or elimination of child support debt to make child support arrearages more manageable and the adjustment of the mandatory statewide child support guidelines.	<i>Child Support Services</i>	<i>State</i>
Child Support Hold Harmless	Support proposals that would hold counties harmless for any error or omission on the part of the State, including failure to meet collection standards.	<i>Child Support Services</i>	<i>State</i>
Child Support Collections	Support proposals that seek to enable local child support agencies to collect child support from non- traditional sources of income paid to parents who owe past-due child support.	<i>Child Support Services</i>	<i>State</i>
Child Welfare Caregiver Resources & Services	Support legislation that increases services and resources for caregivers of children and former foster youth who are victims of, or at risk of abuse, neglect, or exploitation.	<i>Social Services Agency/Probation</i>	<i>State/Federal</i>
Child Welfare Funding	Support child welfare funding reform efforts that increase eligibility for federal and state funds under programs that include, but are not limited to Title IV-E.	<i>Social Services Agency</i>	<i>State/Federal</i>
Child Welfare Resources, Services, & Placements	Support legislation that increases and supports appropriate short and long-term placements, services, and resource options for children and former foster youth who are victims of, or at risk of abuse, neglect, or exploitation.	<i>Social Services Agency/Probation</i>	<i>State/Federal</i>



COMMUNITY SERVICES

ISSUE	SUMMARY / ACTION ITEM	DEPARTMENT	STATE/FEDERAL
Disaster Response	Support measures that increase resources for disaster response initiatives requiring county involvement.	Health Care Agency/Social Services Agency/Sheriff's Department	State/Federal
Environmental Health	Support measures that increase funding and resources to promote environmental and public health efforts across the County, including but not limited to vulnerable populations affected by climate change.	Health Care Agency	State/Federal
Expanded Subsidized Employment	Improve local control and efficacy by allowing counties flexibility to utilize funds for expanded subsidized employment.	Social Services Agency	State
Flat Funding	Support additional funding for the Older Californians Act and other programs that assist older adults and caregivers.	OC Community Resources/Social Services Agency	State
General Assistance Funding	Support state funding for general assistance programs.	Social Services Agency	State
Health & Wellness	Support measures that protect the public against disease and disability and promote health.	Health Care Agency	State/Federal
Health Equity & Population Health	Support proposals that improve health equity and ensure all population groups in the County have access to resources that promote and protect health in collaboration with community partners.	Health Care Agency	State/Federal
Homelessness Prevention	Support efforts to develop permanent supportive housing and affordable housing and promote the flexible use of funding to meet the needs of individuals and families.	County Executive Office/Health Care Agency/OC Community Resources	State/Federal
Hospitalization Rates	Support legislation that would cap hospitalization rates for county inmates at the federal government standard (Medicare and/or Medi-Cal rates).	Health Care Agency	State
In-Home Supportive Services (IHSS)	Support legislation that promotes the financial sustainability of the In-Home Supportive Services Program through programmatic changes and appropriate cost sharing mechanisms between the State and counties.	Social Services Agency	State
Independent Living	Support measures that enable seniors and the adult disabled population to obtain affordable housing, including funding and approval of senior housing projects, and continue to maintain seniors as a priority group in the housing voucher program.	OC Community Resources	State/Federal
Inmate Medical/Mental Health Care	Support proposals, such as repealing the Medicaid Inmate Exclusion Policy among others, to maximize reimbursement of health care for criminal justice involved individuals while in-custody and in the community.	Health Care Agency	State/Federal
Lanterman-Petris Short-Act	Support reform of the Lanterman-Petris-Short Act and related laws in a manner that would serve and protect the mentally ill, provide whole person care, protect patients' rights, provide sufficient and ongoing funding for services mandated by the Act, and promote patient engagement in their mental health treatment.	Health Care Agency	State
Library E-rate	Support discounts for eligible public libraries on internet access, telecommunications, Wi-Fi equipment, and related costs.	OC Community Resources	Federal



COMMUNITY SERVICES

ISSUE	SUMMARY / ACTION ITEM	DEPARTMENT	STATE/FEDERAL
Library Funding	Support efforts to increase library funding for capital improvement projects and the maintenance, expansion, and development of new services to safely keep communities connected and informed.	<i>OC Community Resources</i>	<i>State/Federal</i>
Library Literacy Program	Support efforts to ensure that training and resources are available to help libraries provide literacy programs and services, specifically in the areas of education and social services.	<i>OC Community Resources</i>	<i>State</i>
Library Resource Sharing	Support legislation that seeks to expand public library consortiums and networks to improve the availability of services and increase access to digital content for all California citizens.	<i>OC Community Resources</i>	<i>State</i>
Low and Moderate-Income Housing	Support efforts to streamline funding, construction processes, and land use regulations, which expedite the development of low- and moderate-income housing units and allow local governments to adequately plan to meet the housing needs of all economic segments of the community.	<i>OC Community Resources/ OC Public Works</i>	<i>State/Federal</i>
Medi-Cal 1915(b) & 1115 Waivers (CalAIM)	Support efforts to enhance the Medi-Cal program and support services, while maximizing local flexibility and available funding.	<i>Social Services Agency/Health Care Agency</i>	<i>State/Federal</i>
OC Cares	Support legislation and funding that advances the OC Cares initiative to effectively link systems of care across the County, provide full care coordination, and improve service delivery across the criminal justice system and health and social service agencies, among others.	<i>All</i>	<i>State/Federal</i>
Older Adult Services	Support funding for the Older Californians Act and other programs, such as the Master Plan for Aging that assist older adults and caregivers, in addition to proposals that increase linkage to senior friendly services, access to technology and communication, and promote safety and healthy aging.	<i>Health Care Agency/ OC Community Resources/Social Services Agency</i>	<i>State/Federal</i>
Proposition 63	Preserve the allocation of Proposition 63 funds to the County and provide more flexibility in the use of such funds by the County.	<i>Health Care Agency/ OC Community Resources</i>	<i>State</i>
Refugee Services & Supports	Support proposals to increase services and resources for refugees and asylees that include, among others, employment services, supportive services, comprehensive health assessments, and referrals to health and mental health services; and ensure the ability of local governments to recover costs.	<i>Health Care Agency/Social Services Agency</i>	<i>State/Federal</i>
Self-Sufficiency	Provide equitable and sufficient funding, services, and resources to help individuals and families achieve self-sufficiency.	<i>Social Services Agency</i>	<i>State/Federal</i>
Sober Living Homes	Support measures that bring more accountability to sober living homes in order to balance the need of those who seek recovery with the residents of the communities where these facilities are or may be located.	<i>County Executive Office/District Attorney/Health Care Agency/OC Public Works/ Sheriff's Department</i>	<i>State/Federal</i>
Spay/Neuter	Support funding for spay/neuter education, vouchers, and clinics.	<i>OC Community Resources</i>	<i>State</i>



COMMUNITY SERVICES

ISSUE	SUMMARY / ACTION ITEM	DEPARTMENT	STATE/FEDERAL
Substance Use Disorder and Mental Health Services	Support proposals to increase accessibility and funding for quality substance abuse and/or mental health services, which include but are not limited to prevention and recovery support to address opioid use, for children, adults, families and incarcerated individuals.	<i>Health Care Agency/Social Services Agency</i>	<i>State/Federal</i>
STI/HIV Management Services	Support legislation and efforts to broaden STI/HIV management program to include meningococcal vaccination for Gay, Bisexual and Persons Living with HIV to protect at risk Americans from meningococcal infection.	<i>Health Care Agency</i>	<i>State/Federal</i>
Transgender Services	Support legislation and efforts to increase services to transgender and gender non-conforming individuals with an emphasis on health equity to increase health care access, STI, HIV screening, treatment, mental health services and gender reaffirming care.	<i>Health Care Agency</i>	<i>State/Federal</i>
Transitional Aged Youth Housing	Support funding and approval of transitional aged youth housing projects, especially for those transitioning out of the foster care system and/or experiencing homelessness.	<i>County Executive Office/ OC Community Resources/ Social Services Agency</i>	<i>State/Federal</i>
Veterans	Support programs and funding that address the specific needs of veterans.	<i>OC Community Resources</i>	<i>State/Federal</i>
Veterans Claims Process	Support increased access to veterans' affairs database, as well as training and funding for VSO claims officers to retrieve claim award information.	<i>OC Community Resources</i>	<i>Federal</i>
Veterans Housing	Support funding and approval of veteran housing projects and continue to maintain veterans as a priority group in the housing voucher program.	<i>County Executive Office/OC Community Resources</i>	<i>State/Federal</i>
Veterans Services	Support efforts to increase operating funding for county veterans service offices (VSOs) to assist veterans and their families with accessing the maximum VA benefits they are entitled to, including but not limited to training for VSO claim officers; increasing access to access to veterans' affairs database; and reducing the federal veterans' claims backlog by creating more efficient federal, state and local government coordination for veterans' claims development.	<i>OC Community Resources</i>	<i>Federal</i>
Work Participation Credit	Support efforts to provide states and localities administering the California Work Opportunity & Responsibility to Kids program partial work participation credit for participants.	<i>Social Services Agency/OC Community Resources</i>	<i>State/Federal</i>
Work Participation Requirements	Support efforts to protect the County from fiscal sanctions for non-compliance stemming from the discrepancies between federal Temporary Assistance for Needy Families (TANF) and state California Work Opportunity & Responsibility (CalWORKs) requirements.	<i>Social Services Agency</i>	<i>State/Federal</i>



INFRASTRUCTURE AND ENVIRONMENTAL RESOURCES

ISSUE	SUMMARY / ACTION ITEM	DEPARTMENT	STATE/FEDERAL
Airport Exit Lanes	Oppose any transfer of administrative, financial, and/or operational responsibility for exit lane screening from the Transportation Security Administration to John Wayne Airport.	<i>John Wayne Airport</i>	<i>Federal</i>
Airport Ground Transportation	Support ground transportation-related measures that ensure passenger safety, protect the County's resources and property, and treat all ground transportation providers serving John Wayne Airport fairly and equitably.	<i>John Wayne Airport</i>	<i>State</i>
Alternative Project Delivery	Support legislation that gives local governments and agencies greater flexibility to use alternative project delivery methods.	<i>OC Public Works</i>	<i>State</i>
Banning Specified Waste	Oppose the banning of non-hazardous materials from landfill disposal or transformation/conversion technology facilities; support efforts to ban hazardous materials from these facilities.	<i>OC Waste and Recycling</i>	<i>State</i>
Beach Preservation and Coastal Funding	Support funding for coastal resiliency research, planning, engineering, design and permitting, and implementation, beach nourishment, coastal erosion control, and shoreline and beach preservation. Support dedicated and predictable funding for coastal flood risk and storm damage reduction projects. Additionally, support sharing of federal outer continental shelf revenues with coastal states to support conservation, coastal infrastructure resiliency and wildlife protection programs.	<i>OC Public Works/ OC Community Resources</i>	<i>State/Federal</i>
Beverage Container Recycling	Support programs and funding to increase the availability of beverage container recycling facilities.	<i>OC Waste and Recycling</i>	<i>State</i>
Bridge Funding	Support proposals that maintain or increase the level of funding for bridges as in previous years and oppose any formula that would provide an inequitable funding share for urban counties.	<i>OC Public Works</i>	<i>State/Federal</i>
Broadband Access	Support legislation and funding to develop broadband infrastructure and affordably connect the community to high-speed, high-capacity broadband. Additionally, support state and federal efforts to expand broadband access to underserved communities.	<i>County Executive Office</i>	<i>State/Federal</i>
California Public Utilities Commission Tariffs	Support efforts to ensure that California Public Utilities Commission tariffs and their interpretation do not shift utility costs from utility owners to counties.	<i>OC Public Works</i>	<i>State</i>
California State Route 241 Extension	Support extension of the 241-toll road and related South Orange County regional mobility improvements.	<i>OC Public Works</i>	<i>State/Federal</i>
Cap & Trade	Oppose efforts to expand the scope of Cap and Trade and the shift of program costs to local governments.	<i>County Executive Office</i>	<i>State/Federal</i>
California Environmental Quality Act	Promote revisions to California Environmental Quality Act that modernize, simplify, and streamline the Act, including environmental clearance reciprocity.	<i>OC Public Works</i>	<i>State</i>



INFRASTRUCTURE AND ENVIRONMENTAL RESOURCES

ISSUE	SUMMARY / ACTION ITEM	DEPARTMENT	STATE/FEDERAL
Clean Energy Infrastructure	Support programs and funding/loans for clean energy infrastructure, clean energy storage, and other green technologies that meaningfully reduce air pollutants and GHG emissions. Additionally, support programs that bring resilient energy supply to County agencies to meet growing demand for electric vehicle charging.	<i>OC Waste and Recycling/John Wayne Airport/OC Public Works/OC Community Resources</i>	<i>State/Federal</i>
Clean Water Act	Support clarifications of, and oppose expansions to, the definition of "Waters of the US."	<i>OC Public Works</i>	<i>Federal</i>
Cogeneration & Central Utility Plant Facilities	Maximize the capacity and efficiency of all County cogeneration and central utility plant facilities by providing its excess thermal and electric loads to county and other governmental agencies within the County's geographical boundaries.	<i>OC Public Works</i>	<i>State</i>
Compliance Fines/Penalties	Oppose regulations/legislation which establishes and/or increases fines/penalties for non-compliance regarding organics, recycling, and procurement.	<i>OC Waste and Recycling</i>	<i>State</i>
County Parks & Trails	Support state and federal funding for recreation amenities and improvements in county parks, facilities, lands, and trails.	<i>OC Community Resources</i>	<i>State/Federal</i>
Dana Point Harbor	Support efforts that encourage development at Dana Point Harbor to enhance public access opportunities, deliver quality recreational opportunities, update visitor serving commercial opportunities, provide water quality improvements, and promote coastal resource preservation.	<i>County Executive Office</i>	<i>State/Federal</i>
Disaster & Emergency Recovery	Support funding for natural resources restoration and for rebuilding or repairing infrastructure and property in post-disaster/or emergency recovery assistance.	<i>County Executive Office/OC Community Resources/OC Waste and Recycling/OC Public Works</i>	<i>State/Federal</i>
Diversion Credits	Support incentives that allow 100% diversion credits for conversion technologies and for beneficial reuse of materials at landfills.	<i>OC Waste and Recycling</i>	<i>State</i>
Encroachment	Protect John Wayne Airport and county landfills from liabilities associated with new and encroaching development and other non-compatible land uses.	<i>OC Waste and Recycling/John Wayne Airport</i>	<i>State</i>
Energy & Green Technology Incentives	Support incentives for residents, builders, local governments, and businesses of Orange County regarding the adoption, use, and economic benefits of green technology, recycled products, and eco-friendly products where economically feasible.	<i>All</i>	<i>State/Federal</i>
Federal Aviation Administration	Support efforts that increase transparency and community engagement in the Federal Aviation Administration's decision-making process when proposing changes to the National Airspace System affecting Orange County.	<i>John Wayne Airport</i>	<i>Federal</i>



INFRASTRUCTURE AND ENVIRONMENTAL RESOURCES

ISSUE	SUMMARY / ACTION ITEM	DEPARTMENT	STATE/FEDERAL
Fire Protection	Support enhanced funding for fire prevention and hazardous fuel removal projects in state responsibility area lands and ensure local agencies/landowners have access to these funds. Support funding for local agencies to better prepare park lands and facilities for wildfire prevention, mitigation, and extinguishment and to assist local agencies in repairing and restoring fire-damaged property and recreational amenities.	<i>OC Community Resources</i>	<i>State</i>
Flood Control	Support legislation that would provide clarity for local agencies in the reimbursement process with the State related to financial assistance received under the Department of Water Resources subvention program.	<i>County Executive Office</i>	<i>State</i>
Flood Control Maintenance	Support measures that provide statutory exemptions on water use regulations to include critical flood control, water resource management and maintenance projects.	<i>OC Public Works</i>	<i>State/Federal</i>
Habitat Mitigation	Support legislation or administrative action which allows flexibility for County agencies to comply with long-term financial assurance requirements for habitat mitigation, standardization of land management requirements across regulatory agencies and county engagement and input in final mitigation requirements.	<i>OC Waste and Recycling/OC Community Resources</i>	<i>State/Federal</i>
Habitat Restoration	Support state and federal funding for watershed and habitat restoration efforts.	<i>OC Community Resources/OC Public Works</i>	<i>State/Federal</i>
Highway Users Tax Account	Protect the Highway Users Tax Account from being diverted for purposes other than County transportation.	<i>OC Public Works</i>	<i>State</i>
Household Hazardous Waste and Pharmaceuticals	Support extended producer responsibility and take-back programs and oppose unfunded mandates extending jurisdictions' responsibility for collection/disposal of household hazardous waste and pharmaceuticals.	<i>OC Waste and Recycling</i>	<i>State/Federal</i>
Infrastructure	Support efforts to obtain fair compensation for long-term use, cost of review, and preservation of the intended usage of vital county and Orange County Flood Control District infrastructure and property.	<i>County Executive Office/OC Public Works</i>	<i>State/Federal</i>
Invasive Species	Support efforts that will provide funding to limit the continued spread of or reduce, control, and/or eradicate invasive species.	<i>OC Community Resources/OC Public Works</i>	<i>State/Federal</i>
Landfill Gas-to- Energy	Support efforts that facilitate the viable generation of electricity and natural gas for beneficial uses through landfill gas-to-energy and conversion technology facilities utilizing public utility transmission and distribution grids/line and lowering the cost to connect to distribution grids/lines.	<i>OC Waste and Recycling</i>	<i>State/Federal</i>
Local Evacuation Routes	Support efforts that direct state departments of transportation to give consideration to the condition and effectiveness of local evacuation routes in high-risk areas when setting priorities for disbursement of highway funding.	<i>OC Public Works</i>	<i>State/Federal</i>
National Environmental Policy Act	Promote revisions to the National Environmental Policy Act that modernize, simplify, and streamline the Act, including environmental clearance reciprocity.	<i>OC Public Works</i>	<i>Federal</i>



INFRASTRUCTURE AND ENVIRONMENTAL RESOURCES

ISSUE	SUMMARY / ACTION ITEM	DEPARTMENT	STATE/FEDERAL
Organics Recycling	Support funding/loan programs for infrastructure for organics recycling/repurposing and energy/gas products from the conversion of municipal solid waste.	<i>OC Waste and Recycling</i>	<i>State/Federal</i>
Per-and Polyfluoroalkyl Substances (PFAS)	Support measures that provide state or federal funding for the management, disposal, and cleanup of PFAS, and provide guidance and flexibility to comply with requirements. Oppose measures that create liability for cleanup or damages from the federally mandated use of substances containing PFAS.	<i>John Wayne Airport</i>	<i>State/Federal</i>
Port of Entry	Support John Wayne Airport, Orange County's request to U. S. Customs and Border Protection for designation as a "Port of Entry."	<i>John Wayne Airport</i>	<i>Federal</i>
Recreation and Preservation	Support funding to promote access to recreational opportunities and open space which include: the development, and/or improvement of recreation infrastructure, parkland, historic sites and landmarks, wilderness trails; maintenance of park facilities and habitat and wilderness areas; and restoration of encampment areas.	<i>OC Community Resources</i>	<i>State/Federal</i>
Regional Housing Needs Assessment (RHNA)	Support legislation that provides clarity, addresses inconsistencies, or provides flexibility in the RHNA process for a successful completion of the County's Housing Element.	<i>OC Public Works</i>	<i>State</i>
Regional Planning	Protect local decision-making authority and encourage regional planning that ensures economic competitiveness, and balances quality of life, environment, and health in the development of the Regional Air Quality Master Plan and the Regional Transportation Plan-Sustainable Communities Strategy.	<i>John Wayne Airport</i>	<i>State/Federal</i>
San Onofre Nuclear Generating System	Support efforts to fully decommission the San Onofre site and the timely removal and responsible management of spent nuclear fuel storage.	<i>County Executive Office</i>	<i>State/Federal</i>
Short Lived Climate Pollutants	Monitor regulations being promulgated by the California Air Resources Control Board, to address short-lived climate pollutants particularly as they relate to proposed reductions in the statewide disposal of organic waste from the 2014 level by 2020 and a 75% reduction by 2025.	<i>OC Waste and Recycling</i>	<i>State</i>
State Flood Control Subvention Program	Support additional funding for the program to assist with the completion of federally authorized flood protection infrastructure projects	<i>OC Public Works</i>	<i>State</i>
Trails & Bikeways Systems	Support state and federal funding for alternative transportation programs to expand and improve the County's regional trails and bikeways system.	<i>OC Community Resources/OC Public Works</i>	<i>State/Federal</i>
Transportation-Funding Surface Transportation Authorization Act	Support the reauthorization of a surface transportation act. Support implementation of the provisions of the Surface Transportation Authorization Act in an equitable manner that promotes equitable funding levels, programming roles, and local discretion in allocation decisions.	<i>OC Public Works</i>	<i>Federal</i>
Transportation/Infrastructure Funding	Support more transportation and infrastructure funding without new taxes.	<i>OC Public Works/John Wayne Airport</i>	<i>State</i>



INFRASTRUCTURE AND ENVIRONMENTAL RESOURCES

ISSUE	SUMMARY / ACTION ITEM	DEPARTMENT	STATE/FEDERAL
Transportation Reauthorization	Support efforts within the surface transportation reauthorization legislation, or other appropriate legislation, that direct state departments of transportation to give consideration to the condition and effectiveness of local evacuation routes in high-risk areas when setting priorities for disbursement of highway funding.	<i>OC Public Works</i>	<i>State/Federal</i>
Utility Lines/Wildfires	Support efforts that seek to improve utility fire mitigation standards in at-risk communities, including, but not limited, to the use of underground utility- related infrastructure. Oppose efforts to reduce accountability for wildfire liability.	<i>County Executive Office</i>	<i>State</i>
Waste Disposal Surcharge Fees	Oppose state fee surcharges unless they are based on reasonable and related costs and do not promote illegal dumping or cause undue financial burden to local governments.	<i>OC Waste and Recycling</i>	<i>State</i>
Waste Management Operations	Support proposals streamlining regulations and/or providing funding for solid waste, organics recycling, and hazardous waste operations.	<i>OC Waste and Recycling</i>	<i>State/Federal</i>
Water Quality	Ensure that the implementation of the Clean Water Act, Water Resources Development Act, and the Porter-Cologne Act benefits County of Orange projects and programs.	<i>OC Public Works/John Wayne Airport</i>	<i>State/Federal</i>
Water Resources Infrastructure	Support funding and completion of vital flood and water infrastructure projects, including local stormwater capture and use projects that can provide drought resiliency and other related environmental benefits.	<i>OC Public Works</i>	<i>State/Federal</i>
Water Use Efficiency	Support cost-effective water conservation programs and/or incentives that preserve water resources and the beneficial reuses of storm water. Support funding for conversion of water delivery infrastructure for parks and facilities.	<i>OC Community Resources/John Wayne Airport/OC Public Works</i>	<i>State/Federal</i>
Zoological Operations and Care	Support funding of the Orange County Zoo. Oppose efforts that would impose undue or cost prohibitive regulations or legislation on zoological operations and care.	<i>OC Community Resources</i>	<i>State/Federal</i>



GENERAL GOVERNMENT SERVICES

ISSUE	SUMMARY / ACTION ITEM	DEPARTMENT	STATE/FEDERAL
Access & Equity	Support efforts to increase funding to improve disability and language access and provide equitable resources to all County residents.	All	State/Federal
Access for Voters	Promote and increase voter registration and access to the ballot for as many eligible voters as possible.	Registrar of Voters	State
Bonds & Funding Measures	Support an equitable disbursement of state and federal funding in all bond and funding measures affecting the County.	All	State/Federal
Burdensome Regulatory Requirements	Support proposals that minimize burdensome requirements and legal obstacles, facilitate streamlined and efficient regulatory review and permitting for public agency/government projects, eliminate duplicative or contradictory regulations, and mitigate redundancy in reporting requirements.	All	State/Federal
Capital Improvement Funding	Support legislation that provides funding for capital improvement projects to address life safety, ADA accessibility, and other critical maintenance needs.	All	State/Federal
County Revenue	Oppose efforts to decrease, eliminate, divert, supplant, or restrict local autonomy of local revenues.	All	State/Federal
Cybersecurity	Support efforts to develop and implement state/federal governance and planning frameworks that will assess local government information systems and capabilities for cybersecurity risks and vulnerabilities. Additionally, support measures that provide funding to address cybersecurity risks and maintain cyber hygiene.	County Executive Office	State/Federal
Data Sharing Integration	Support efforts that improve data sharing among County agencies and partners to enhance care coordination and cross-sector collaboration, increase outreach to expand/accelerate access to services and benefits offered by public agencies, and facilitate more efficient and effective service delivery while ensuring client privacy and confidentiality.	All	State/Federal
Economic Growth and Development	Support efforts to promote job growth and economic development.	All	State/Federal
Election Services	Support the provision of adequate funding to administer election services.	Registrar of Voters	State
Emergency Medical Services	Support legislation that strengthens local emergency medical services to improve system integration and oppose efforts that would enable system fragmentation or undermine public safety and the authority of local medical services agencies.	Health Care Agency	State/Federal
Employee/Labor	Support full cost recovery for salary, benefits, and administration for all employee relationships, and protect and enhance flexibility and local control over employee and labor relations issues.	County Executive Office	State
Funding Flexibility	Support efforts that enhance funding flexibility and oppose efforts to eliminate or redirect revenues currently dedicated to local governments.	All	State/Federal
Gas Tax	Oppose hidden gas taxes and other similar regulatory schemes.	County Executive Office	State
Grant Funding Restrictions	Support efforts to ensure local governments are not restricted from applying for or receiving grant funding.	County Executive Office/John Wayne Airport	State/Federal



GENERAL GOVERNMENT SERVICES

ISSUE	SUMMARY / ACTION ITEM	DEPARTMENT	STATE/FEDERAL
Local Control	Oppose legislation that does not recognize California's diversity and the need for local government autonomy in addressing problems and providing services for our residents, and support measures that promote flexibility and local control over County operations and programs.	<i>All</i>	<i>State/Federal</i>
Privacy/Security	Support legislation and efforts that increase protections for personal identifiable information that is collected electronically by the County in compliance with various state and federal laws and local ordinances.	<i>Treasurer Tax Collector/Assessor/Clerk-Recorder</i>	<i>State/Federal</i>
Program Efficiency	Support efforts that promote the efficient administration of program services and benefits, as well as increase access and improve customer service.	<i>All</i>	<i>State/Federal</i>
Property Tax Funding Equity	Support a more equitable reallocation of property tax revenue to county government, providing funding for countywide public services, and reflecting an allocation that aligns with similarly urbanized counties.	<i>County Executive Office</i>	<i>State</i>
Property Tax Revenue	Protect local property tax revenues and oppose any measure aimed at reducing the protections afforded to the County.	<i>County Executive Office</i>	<i>State</i>
Proposition 172	Protect the County's Proposition 172 funding allocation.	<i>County Executive Office</i>	<i>State</i>
Public Health Emergency Response	Support and advocate for any legislative or budgetary action, including stimulus money, related to the response, recovery and/or economic impacts of public health emergencies, such as COVID-19, both during the emergency and the long-term recovery period.	<i>All</i>	<i>State/Federal</i>
Public Pensions	Support policy allowing local officials to manage pension systems that meet the needs of their workforce and demonstrate sound fiduciary management.	<i>County Executive Office</i>	<i>State</i>
Public Pension Waiver	Seek waiver on IRS Rev. Rul. 2006-43 to allow county employees to elect alternative pension plans.	<i>County Executive Office</i>	<i>Federal</i>
Public Private Partnership	Support legislation that would provide additional avenues for generation of revenue from existing public property, through public-private partnerships or otherwise, which could be used to support and implement public programs or to defer costs of new public buildings or infrastructure.	<i>County Executive Office</i>	<i>State</i>
Reallocation of Tax Revenue	Oppose the shifting of tax revenues and tax increment from the County to the State, other local entities or special districts.	<i>County Executive Office</i>	<i>State</i>
Regulatory Review Processes	Support efforts, including streamlining and simplification, that facilitate timely and efficient regulatory review and permitting for public agency/government projects, and increased coordination among federal and state agencies, while upholding environmental, health and safety, public protection and other important standards.	<i>All</i>	<i>State/Federal</i>
Split-Roll Prop 13	Oppose split-roll and other efforts to harm Proposition 13.	<i>County Executive Office</i>	<i>State</i>
State & Federal Mandates	Support full funding for state and federal mandates on the County and pursue revisions to streamline the process for local government.	<i>All</i>	<i>State/Federal</i>
State/Federal Realignment & Cost- Shifts	Oppose proposals to restructure, realign, or otherwise shift the cost of programs to local government without commensurate compensation.	<i>All</i>	<i>State/Federal</i>

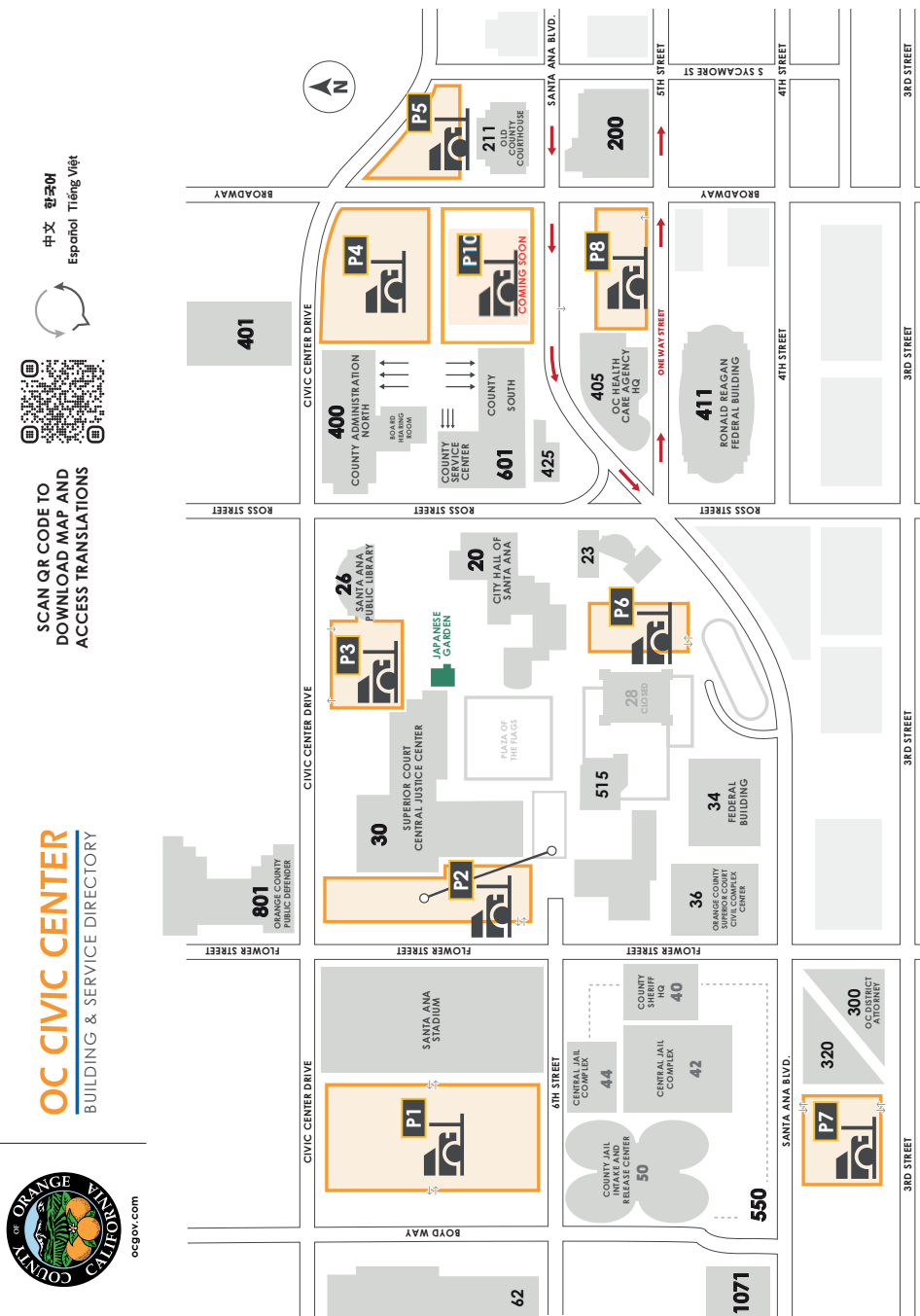


GENERAL GOVERNMENT SERVICES

ISSUE	SUMMARY / ACTION ITEM	DEPARTMENT	STATE/FEDERAL
Technology	Support funding, use of technology, and technological advances to increase efficiency and expand/expedite access to services and benefits offered by County agencies and its agents.	All	State/Federal
Tustin/El Toro Military Bases	Support expedited resolution of remaining issues at the closed Tustin and El Toro military bases to facilitate conveyance of land to the County, per the requirements of the Base Realignment and Closure Act.	County Executive Office	Federal
Unfunded Actuarial Accrued Liability	Support legislation that requires full payment of unfunded actuarial accrued liability for active and retired employees enrolled in the Orange County Employee Retirement System if a public agency withdraws from Orange County Fire Authority.	County Executive Office	State
Voter Threshold	Oppose efforts to reduce the voter threshold necessary to increase taxes and fees.	County Executive Office	State
Voting System Funding	Support legislation that establishes avenues and consistent funding mechanisms for the maintenance and/or replacement of voting systems equipment.	Registrar of Voters	State/Federal



PARKING INFORMATION	
P1 Stadium Parking Structure 1002 West Civic Center Drive	Hours & Payments Cashier on Duty: 24/7/365 • Credit cards accepted at all exit lanes. • Pay-on-Foot/Cash Payment Machine 24/7/365
P2 Super Block West 6 th Street at N. Flower Street	Hours & Payments Cashier on Duty: Mon-Fri, 6:30 a.m. - 11:30 p.m. • Credit cards accepted at all exit lanes.
P3 Courthouse/Library Parking Structure 690 West Civic Center Drive	Hours & Payments Cashier on Duty: Mon-Fri, 5:30 a.m. - 9 p.m. • Credit cards accepted at all exit lanes. • Closed weekends, major holidays.
P4 CAN Surface Parking Lot 630 North Broadway Street	Hours & Payments • Mon-Fri, 7 a.m. - 7 p.m. • Credit cards accepted at exit column. • Pay-on-Foot/Cash and Credit Payment Machine • Closed weekends, major holidays.
P5 Historic Courthouse Metered Surface Parking Lot Civic Center Dr. at Broadway [Entry/Exit at Civic Center Dr.]	Hours & Payments • Mon-Sat, 8 a.m. - 10 p.m. • Pay by credit card or by coin at meter. • 2-hour maximum limit per stay.
P6 Appellate Court Parking Structure 601 W. Santa Ana Blvd. [Automated Entry/Exit at Patton/Santa Ana Blvd.]	Hours & Payments • Credit cards accepted at all exit lanes. • Pay-on-Foot/Cash Payment Machine 24/7/35
P7 Twin Towers Parking Structure 1002 West Santa Ana Boulevard	Hours & Payments Cashier on Duty: Mon-Fri 10:30 a.m. - 7 p.m. Office: Mon-Fri, 8 a.m. - 4:30 p.m. • Credit cards accepted at all exit lanes. • Rolling gates open Mon-Fri 5 a.m. - 7 p.m. • Closed weekends, major holidays.
P8 Transit Tower Parking Structure 301 West 5 th Street	Hours & Payments Cashier on Duty: Mon-Fri, 7 a.m. - 7 p.m. • Credit cards accepted at all exit lanes. • Rolling gates open Mon-Fri 7 a.m. - 7 p.m. • Closed weekends, major holidays.





COUNTY OF ORANGE

[SERVICES BY BUILDING]

400

County Administration North (CAN) / Hall of Administration

400 West Civic Center Drive | (714) 834-2345

Board of Supervisors

First District(714) 834-3110
Second District.....(714) 834-3220
Third District.....(714) 834-3330
Fourth District.....(714) 834-3440
Fifth District.....(714) 834-3550

Clerk of the Board

Assessment Appeals(714) 834-2331
Board Services.....(714) 834-2206

County Counsel

(714) 834-3300

County Executive Office

- **Deputy County Executive Office**
Office of Core Coordination,
Performance Management & Policy

- **Human Resource Services**

Administrative Services, Central
Human Resource Services, Employee
Benefits, Employee & Labor Relations,
HRIS Operations, Learning &
Organizational Development

- **Finance Office**

Finance & Budget, Procurement,
Public Finance, Risk Management

- **Government & Community Relations**

Administration & Special Projects,
Communications, Legislative Affairs

- **Real Estate Services**

Human Resource Services, Central
Human Resource Services, Employee
Benefits, Employee & Labor Relations,
HRIS Operations, Learning &
Organizational Development

OC Health Care Agency

ochealthinfo.com

Accounting, Authority & Quality Improvement Services, Information Technology,
Mental Health & Recovery Services, Purchasing

601

County Administration South (CAS) / County Service Center (1st Floor)

601 North Ross Street | (714) 667-8800

OC Clerk-Recorder

(714) 834-2500

- Document Recording Services
- Vital Records (Birth/Death/Marriage)
- Real Property Records
- Fictitious Business Name
- Notary Public/Oath Filing
- Environmental Impact Report
- Process Server
- Legal Document Assistance
- Professional Photo Copier
- Unlawful Detainer
- Passport Services

OC Community Resources

(714) 480-2788

OC Public Works

(714) 667-8800

- Building Permits
- Encroachment Permits
- Planning and Zoning
- Inspections
- Code Enforcement
- Permit Record Research
- Addressing
- Map and Parcel Record Research
- Flood Control

OC Waste & Recycling

(714) 834-4000

Treasurer-Tax Collector

(714) 834-3411

- Pay Property Tax
- Drop-Off Tract Map
- Mobile Home Tax Clearance Certificate

Internal Audit

(714) 834-5475

425

County Conference Center

425 West Santa Ana Boulevard

OC Health Care Agency

200

Office of Vital Records,
Custodian of Records and
California Children Services
200 West Santa Ana Boulevard
(714) 480-6700

401

OC Links
401 West Civic Center Drive
(855) 625-4657

405

Headquarters
405 West 5th Street
ochealthinfo.com

OC Sheriff's Department

320

Professional Standards Div.
320 North Flower Street
(714) 834-5100

550

County Jail Intake and
Release Center
550 North Flower Street
(714) 647-7000

- OC Sheriff's Headquarters (40)
- Central Jail Complex (42, 44)
- County Jail Intake and Release Center (50)
- Mobile Home Tax Clearance Certificate

1071

Coroner Division
1071 W. Santa Ana Boulevard
(714) 647-7400

Additional County Services

36

Orange County Superior Court
Civil Complex Center
751 West Santa Ana Boulevard
(657) 622-6878

211

Old County Courthouse
211 West Santa Ana Boulevard
(714) 834-2500
• Marriage License, Civil Wedding
Ceremonies, Archives
• Assessment Appeals Hearings
• Historical Commission

300

District Attorney
300 North Flower Street
(714) 834-3600
801
Orange County Public Defender
801 Civic Center Drive West, Suite 400
(657) 251-6090



FEDERAL

34
Santa Ana
Federal Building
34 Civic Center Plaza
Ronald Reagan Federal
Building and United States
Courthouse
411 West 4th Street
801
Internal Revenue Service
801 Civic Center Drive W.



STATE

23
4th District Court
of Appeal
601 West Santa Ana Blvd.
515
Orange County
Public Law Library
515 North Flower Street
30
Superior Court
Central Justice Center
700 Civic Center Drive W.
• Civil, Criminal, Traffic



CITY

20
City Hall of Santa Ana
20 Civic Center Plaza
(714) 647-5400
26
Santa Ana Public Library
26 Civic Center Plaza
62
Santa Ana City Jail
62 Civic Center Plaza

DOWNLOAD THIS MAP
AND ACCESS ONLINE
TRANSLATIONS AT:

ocpublicworks.com/parking



中文 한국어
Español Tiếng Việt



**COUNTY OF ORANGE
COUNTY EXECUTIVE OFFICE**

400 W. Civic Center Drive
Santa Ana, CA 92701
(714) 834-2345