



# COUNTY OF ORANGE

P R E S S R E L E A S E

WWW.OCGOV.COM

FOR IMMEDIATE RELEASE

Contact: Molly Nichelson  
(714) 834-7218  
[Molly.Nichelson@ocgov.com](mailto:Molly.Nichelson@ocgov.com)

## County of Orange Releases 2019 Point in Time Count Results

**Santa Ana, Calif.** (April 24, 2019) – Today the County of Orange released the results of the 2019 Point In Time count.

“The data collected during the Point in Time contains valuable information that the County and our community stakeholders will use to ensure resources are distributed to best serve those experiencing homelessness,” said Chairwoman Lisa Bartlett, Fifth District Supervisor.

More than 1,000 volunteers across Orange County counted 6,860 individuals experiencing homelessness. Of those, 2,899 were sheltered while 3,961 were unsheltered.

“The work conducted by the County in accordance with the U.S. Department Housing and Urban Development (HUD) guidelines provides a more accurate snapshot of where homeless individuals are in the county,” said Vice Chair Michelle Steel, Second District Supervisor.

The 2019 Orange County Point In Time count used a new methodology and tools to gather real-time data using a secure mobile app, as opposed to previous years when an extrapolation method was used. The 2019 Orange County Point In Time Count also included a survey for those willing to participate.

“Tackling one of the most challenging public policy issues the County of Orange has ever faced takes the efforts of not only the County, but also our city and nonprofit partners,” said Supervisor Andrew Do, First District. “These robust data sets will assist the County and its partners in better understanding and addressing the needs of those experiencing homelessness within Orange County.”

Individuals experiencing homelessness were broken into different demographic groups including sheltered and unsheltered, veterans, transitional aged youth, seniors and families. In addition, those surveyed were also able to self-report if they had substance abuse issues, serious mental health issues as well as if they had a physical disability amongst other demographic factors.

“I appreciate the work of County staff, our nonprofit partners, and the volunteers whose diligence provided us with an accurate count. This information serves as a baseline for the County as we all work together to provide help to our homeless population,” said Supervisor Donald P. Wagner, Third District.

Of note, Orange County saw a 121 percent increase in the number of emergency shelter beds from 2017 to 2019. This was an increase in 1,390 beds in total.

“The County, along with our city and nonprofit partners, have been working diligently to increase the number of emergency shelters within the System of Care and that cooperation is commendable,” said Supervisor Doug Chaffee, Fourth District.

More information about the 2019 Point in Time count may be found in the attached document. The final report on the 2019 Point in Time count will be submitted to HUD on April 30, 2019.

###



# EVERYONE COUNTS

## 2019 POINT IN TIME SUMMARY

April 2019



# EVERYONE COUNTS

## TABLE OF CONTENTS

<b>2019 POINT IN TIME COUNT TOTALS</b>	<b>3</b>
<b>SHELTERED COUNT</b>	<b>4</b>
<b>UNSHELTERED COUNT</b>	<b>5</b>
<b>UNSHELTERED SUBPOPULATIONS &amp; DEMOGRAPHICS</b>	<b>6</b>
<b>SHELTER INVENTORY &amp; HOUSEHOLD STATUS</b>	<b>7</b>
<b>COMMUNITY TIES: UNSHELTERED ADULTS</b>	<b>8</b>
<b>COMMUNITY TIES: UNSHELTERED ADULTS</b>	<b>9</b>
<b>HOW ORANGE COUNTY IS ADDRESSING HOMELESSNESS</b>	<b>10</b>
<b>2019 POINT IN TIME COUNT: CITY BY CITY</b>	<b>11</b>



# EVERYONE COUNTS

## 2019 POINT IN TIME COUNT TOTALS

### 2019 POINT IN TIME COUNT BY THE NUMBERS

**6,860**  
Individuals

**North: 2,765** Individuals  
**Central: 3,332** Individuals  
**South: 763** Individuals

### SUBPOPULATIONS

**311**

#### VETERANS

Individuals who served in the U.S. Armed Forces, National Guard or Reserves

**271**

#### TRANSITIONAL AGED YOUTH

Individuals ages 18 to 24

**677**

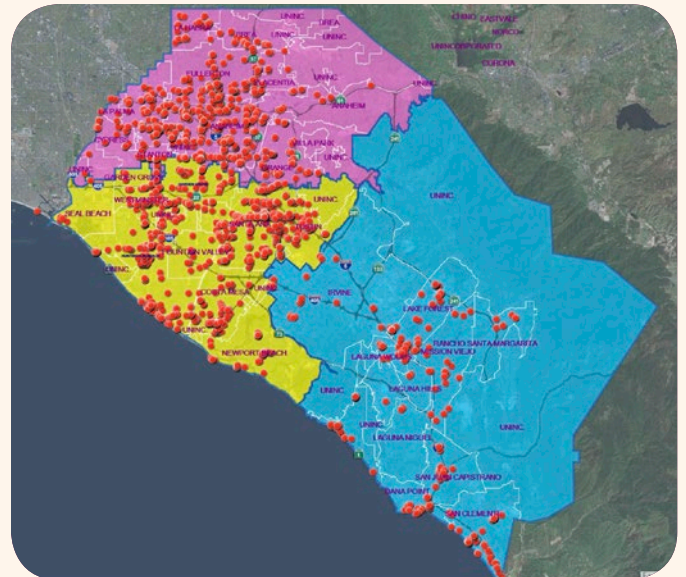
#### SENIORS

Individuals ages 62 and older

### METHODOLOGY

The U.S. Department of Housing and Urban Development (HUD) requires that all Continuum of Care jurisdictions across the nation complete a biennial unsheltered count and an annual sheltered count of all individuals experiencing homelessness in the community on a single point in time during the last ten days of January.

Orange County's 2019 Sheltered Point In Time Count took place the night of Tuesday, January 22, 2019. Emergency Shelters and Transitional Housing Programs collected client-level demographic information from individuals and families staying the night in each program. The 2019 Unsheltered Count process took place over two days, Wednesday, January 23 and Thursday, January 24, to ensure the 800 square mile County jurisdiction was canvassed effectively. The change in methodology allowed the count teams to collect unique ID data points that were used to deduplicate records for the two day street count process. The survey data was collected with ArcGIS Survey 123, a phone application that captures GIS locations and provides vital information that guides the way the County responds to homelessness in Orange County. The results for the 2019 Everyone Counts process provide the most accurate data on the scope of homelessness in the County. Because of this improved process, methodology and data quality from the use of GIS technology, Orange County's 2019 Point In Time Count results ensure that Everyone Counts.





# EVERYONE COUNTS

## SHELTERED COUNT

# 99

### VETERANS

Individuals who served in the U.S. Armed Forces, National Guard or Reserves

# 117

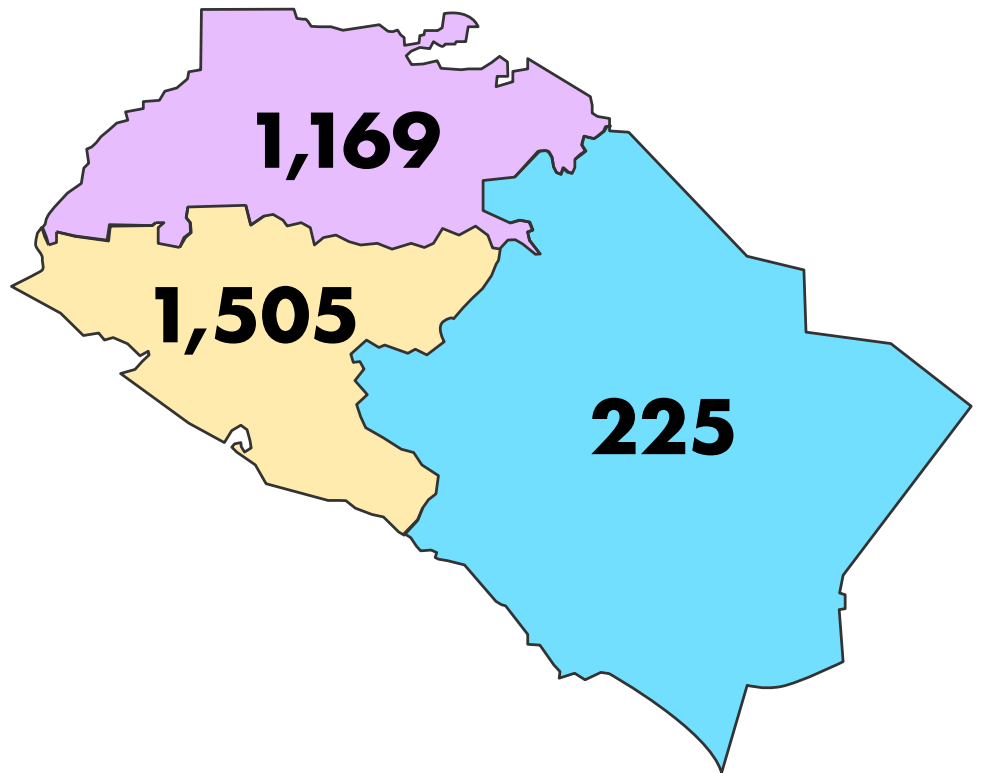
### TRANSITIONAL AGED YOUTH

Individuals ages 18 to 24

# 255

### SENIORS

Individuals ages 62 and older



# 2,899 SHELTERED TOTAL



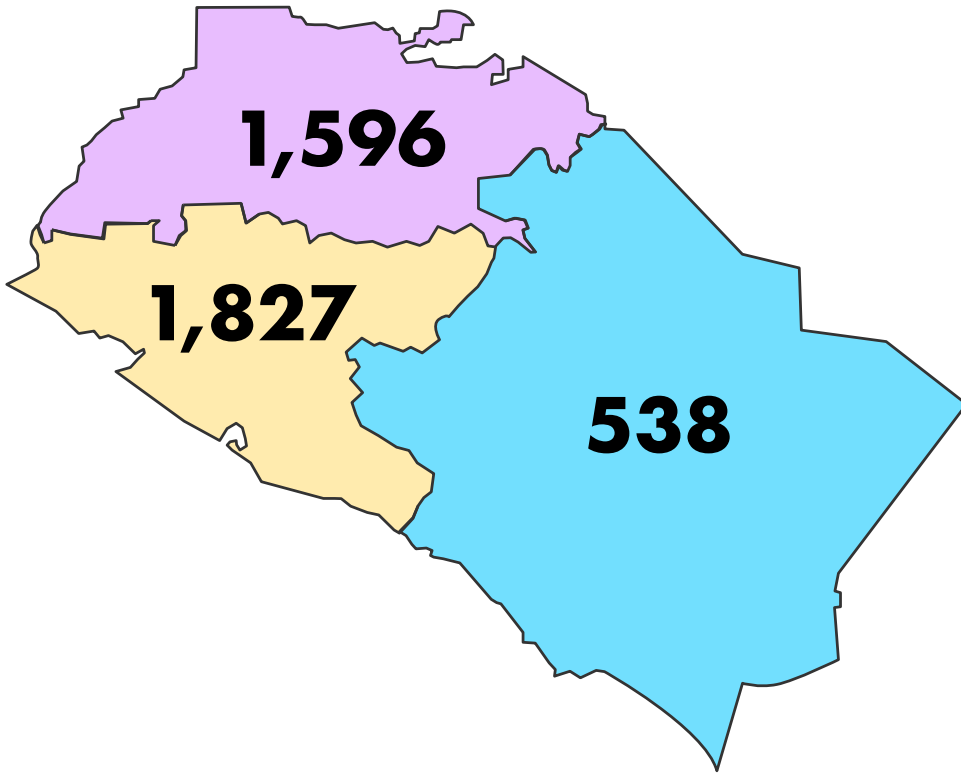
## THANK YOU TO ALL THOSE INVOLVED

- **Hub for Urban Initiatives** – HUD methodology and survey tool design
- **City Net** – lead agency for unsheltered count
- **2-1-1 Orange County** – lead agency for sheltered count
- **County of Orange** – including Health Care Agency, Social Services Agency, OC Community Resources, OC Parks, OC Public Works and OC Information & Technology
- **Continuum of Care Agencies**
- **Nonprofit and faith-based service providers**
- **34 Cities and law enforcement agencies**
- **Community volunteers from every part of our county**



# EVERYONE COUNTS

## UNSHELTERED COUNT



**3,961**  
UNSHELTERED TOTAL

**212**

**VETERANS**

Individuals who served in the U.S. Armed Forces, National Guard or Reserves

**154**

**TRANSITIONAL AGED YOUTH**

Individuals ages 18 to 24

**422**

**SENIORS**

Individuals ages 62 and older

## MAPS & VOLUNTEERS

**1,167**

Community volunteers, nonprofit and faith-based service providers including representatives from law enforcement, all 34 cities and County government.

**244**

Field teams of volunteers deployed into the community to canvas maps and survey people experiencing homelessness.

**239**

Maps were canvassed at least twice during the 2019 Point In Time Count effort.





*\*Some individuals may identify with more than one subpopulation\**

### CHRONIC HOMELESSNESS

**51.98%**

1,932 Individuals

### SUBSTANCE USE ISSUES

**32.90%**

1,223 Individuals

### PHYSICAL DISABILITY

**30.80%**

1,145 Individuals

### MENTAL HEALTH ISSUES

**26.47%**

984 Individuals

### DEVELOPMENTAL DISABILITY

**13.72%**

510 Individuals

### DOMESTIC VIOLENCE

**9.58%**

356 Individuals

### HIV/AIDS

**1.8%**

38 Individuals

# 3,717 ADULTS



### EMERGENCY SHELTERS INVENTORY



**# OF BEDS IN 2017 - 1,149**  
**# OF BEDS IN 2019 - 2,539**  
**% CHANGE: +120.97%**

### TRANSITIONAL HOUSING INVENTORY



**# OF BEDS IN 2017 - 1,166**  
**# OF BEDS IN 2019 - 1,135**  
**% CHANGE: -2.65%**

**79.2%**  
 average occupancy in 2019

**78.2%**  
 average occupancy in 2019

## HOUSEHOLD STATUS

Population	Description	Unsheltered (3,961)	Sheltered (2,899)	TOTAL (6,860)
Individuals	Individuals ages 18+	3,562	1,734	5,296
Families	Households with at least one adult and one child	<b>110 FAMILIES</b> 396 persons in households: 152 Adults 244 Children	<b>356 FAMILIES</b> 1,154 persons in households: 432 Adults 722 Children	<b>466 Families</b> 1,550 persons in households: 584 Adults 966 Children
Unaccompanied Youth	Minors (17 and younger without parent/guardian)	3	11	14





### REPORTED CITY WHERE MOST TIME SPENT WHILE HOMELESS

**City in North Service Planning Area**  
828 Individuals (39%)

**City in Central Service Planning Area**  
900 Individuals (42%)

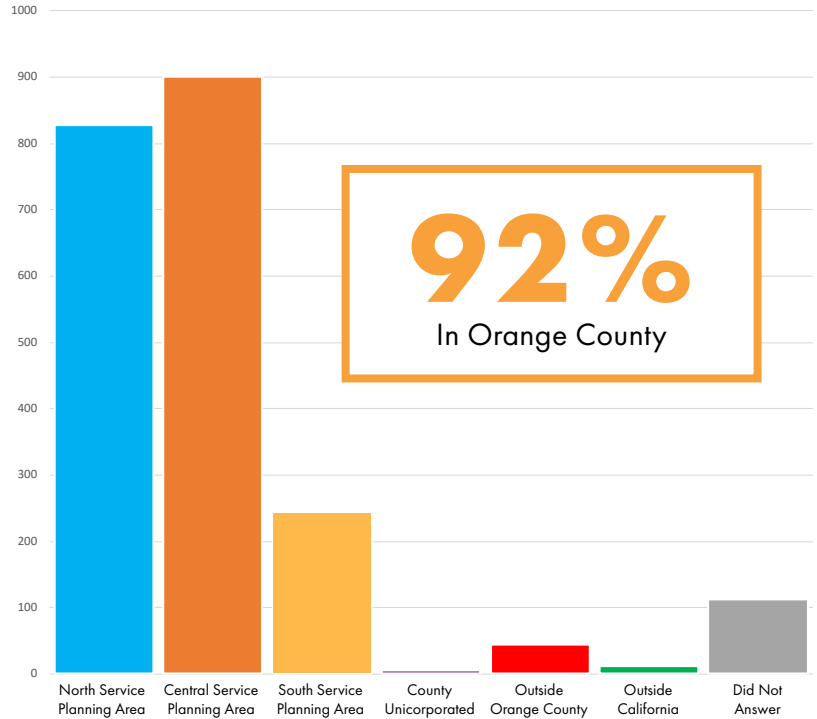
**City in South Service Planning Area**  
244 Individuals (11%)

**County Unincorporated**  
5 Individuals (.002%)

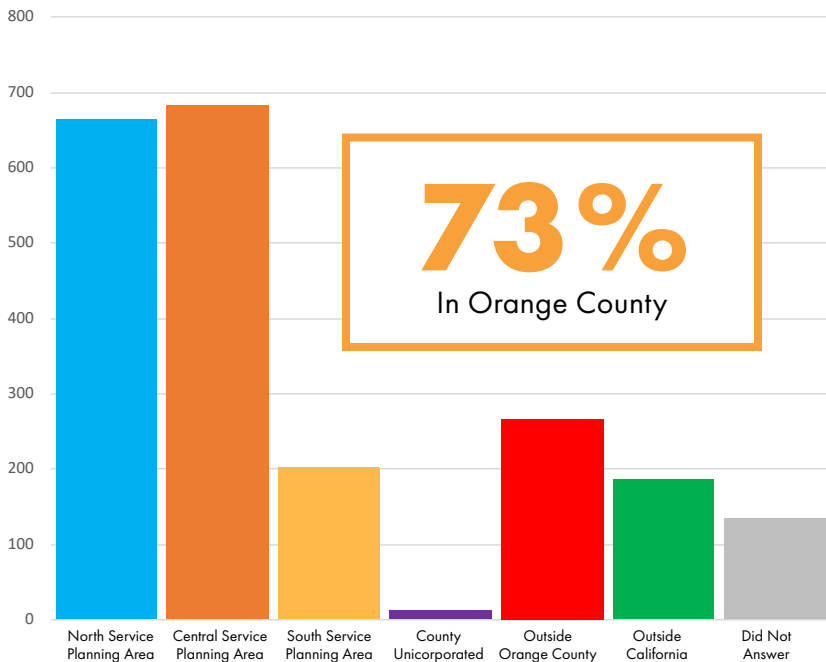
**Outside Orange County**  
45 Individuals (2%)

**Outside California**  
12 Individuals (1%)

**Did Not Answer**  
112 Individuals (5%)



### REPORTED CITY OF LAST PERMANENT ADDRESS



**City in North Service Planning Area**  
663 Individuals (31%)

**City in Central Service Planning Area**  
682 Individuals (32%)

**City in South Service Planning Area**  
202 Individuals (9%)

**County Unincorporated**  
12 Individuals (1%)

**Outside Orange County**  
267 Individuals (12%)

**Outside California**  
186 Individuals (9%)

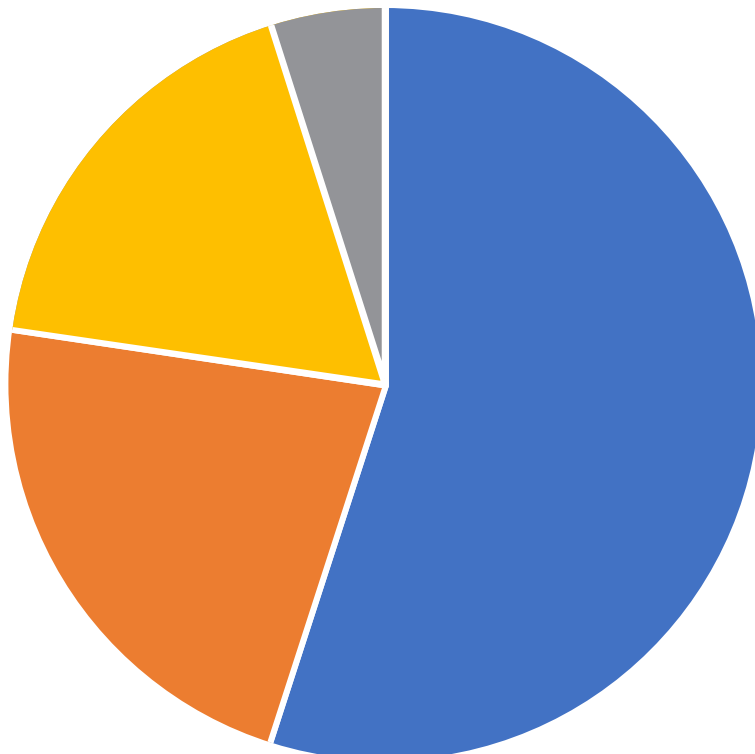
**Did Not Answer**  
134 Individuals (6%)



**51.63%** HAVE FAMILY IN ORANGE COUNTY  
1,108 Individuals

**51.72%** ATTENDING OR HAVE ATTENDED SCHOOL IN ORANGE COUNTY  
1,110 Individuals

**72.08%** CURRENTLY WORKING OR HAVE EVER WORKED IN ORANGE COUNTY  
1,547 Individuals



### CURRENT EMPLOYMENT STATUS

**Unemployed**  
1,180 Individuals (55%)

**Full-Time, Part-Time, Seasonally Employed**  
480 Individuals (22%)

**Retired, Disabled**  
380 Individuals (18%)

**Did Not Answer**  
106 Individuals (5%)



### COUNTY OF ORANGE: SYSTEM OF CARE

What is the “System of Care” and why does it matter in addressing homelessness?

The System of Care is a collaboration of multiple County and local government entities who bring all their resources together to provide customized care to the individual. It is about care of the individual, not just achieving program benchmarks.

The County of Orange has five components to its System of Care with programs that can be customized to fit the needs of the individual and help prevent them from becoming homeless or help them find a home.



#### BEHAVIORAL HEALTH

- Outreach and Engagement Teams
- Mental Health and Substance Use Services
- Housing Navigation
- Development of The Wellness Campus on Anita Drive



#### HEALTHCARE

- Whole Person Care
- Recuperative Care
- Comprehensive Health Assessment Teams – Homeless (CHAT-H)



#### HOUSING

- Emergency Housing - 701 Year-Round, emergency shelter beds
- Expansion of Housing Assistance Programs
- Housing Funding Strategy
- Housing Finance Trust Fund
- Landlord Incentive Program



#### COMMUNITY CORRECTIONS

- Proposition 47 Re-Entry Center Program
- Stepping Up Initiative
- Collaborative Courts



#### PUBLIC SOCIAL SERVICES

- Enhanced Outreach for hard-to-reach populations
- Access to Public Benefits
- Countywide expansion - Restaurant Meals Program
- Chrysalis Employment Program



# EVERYONE COUNTS

## 2019 POINT IN TIME COUNT: CITY BY CITY

CITY	UNSHELTERED	SHELTERED	TOTAL
Anaheim	694	508	1,202
Brea	30	0	30
Buena Park	142	145	287
Cypress	39	0	39
Fullerton	308	165	473
La Habra	45	0	45
La Palma	9	0	9
Los Alamitos	1	21	22
Orange	193	148	341
Placentia	55	108	163
Stanton	71	45	116
Villa Park	0	0	0
Yorba Linda	1	0	1
County Unincorporated	8	0	8
Domestic Violence Programs	N/A	29	29
<b>NORTH SERVICE PLANNING AREA</b>	<b>1,596</b>	<b>1,169</b>	<b>2,765</b>

CITY	UNSHELTERED	SHELTERED	TOTAL
Costa Mesa	187	6	193
Fountain Valley	28	14	42
Garden Grove	163	62	225
Huntington Beach	289	60	349
Newport Beach	64	0	64
Santa Ana	830	939	1,769
Seal Beach	8	0	8
Tustin	95	264	359
Westminster	159	25	184
County Unincorporated	4	31	35
Domestic Violence Programs	N/A	104	104
<b>CENTRAL SERVICE PLANNING AREA</b>	<b>1,827</b>	<b>1,505</b>	<b>3,332</b>

CITY	UNSHELTERED	SHELTERED	TOTAL
Aliso Viejo	1	0	1
Dana Point	32	0	32
Irvine	127	3	130
Laguna Beach	71	76	147
Laguna Hills	24	0	24
Laguna Niguel	7	3	10
Laguna Woods	5	0	5
Lake Forest	76	36	112
Mission Viejo	22	9	31
Rancho Santa Margarita	15	0	15
San Clemente	96	49	145
San Juan Capistrano	62	0	62
County Unincorporated	0	0	0
Domestic Violence Programs	N/A	49	49
<b>SOUTH SERVICE PLANNING AREA</b>	<b>538</b>	<b>225</b>	<b>763</b>